



MLS 6717121 Land

\$109,900

12.06 Acres
Subdivided

149XX Co Hwy 30 [D]
Pelican Rapids MN 56572

Status: Active

Description:

Build Your Dream Home on 12.06 Acres of Wooded Privacy Near Pelican Rapids! Escape to this 12.06-Acre Parcel, offering Peace and Privacy in a Mature Oak Forest with a Tranquil Pond. Just five minutes from Pelican Rapids, this land provides the perfect setting for a Year-Round Home, Cabin, or Private Retreat. With No Covenants or Building Restrictions, you have total freedom to design your ideal space. Trails wind through the dense woods, providing easy access to explore and choose your ideal build site. The heavy timber and natural landscape ensure privacy in every direction, creating a true escape from the everyday. Power is already brought to the property, eliminating the hassle and expense of utility installation. If you've been searching for a Build-Ready Parcel with Seclusion, Beauty, and Total Freedom, this is the one to walk.

Additional Details:

| | |
|------------------------|------------|
| Lot Acres | 12.06 |
| Lot Dimensions | 395 x 1321 |
| School District | 548 |
| Taxes | \$908 |
| Taxes with Assessments | \$908 |
| Tax Year | 2024 |

Additional Features:

Driving Directions:

From Pelican Rapids travel 4 miles west on HWY 108. Turn right on HWY 30. Travel 1/4 mile. Property on left.



Listed By:
Jack Chivers Realty

Affinity Real Estate Inc. participates in the Regional Multiple Listing Service of Minnesota, Inc Broker Reciprocity (sm) program, allowing us to display other broker's listings on our website. All properties are subject to prior sale, change or withdrawal.



Call Affinity Real Estate

218-237-3333

info@affinityrealestate.com



Affinity Real Estate - 600 Park Avenue South - Park Rapids MN 56470



website: www.AffinityRealEstate.com | email: info@affinityrealestate.com | office: 218-237-3333 | fax: 218-237-3377



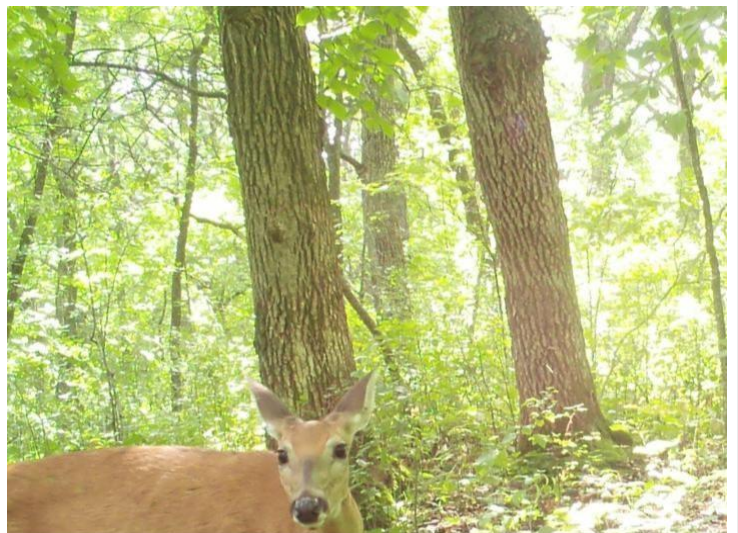
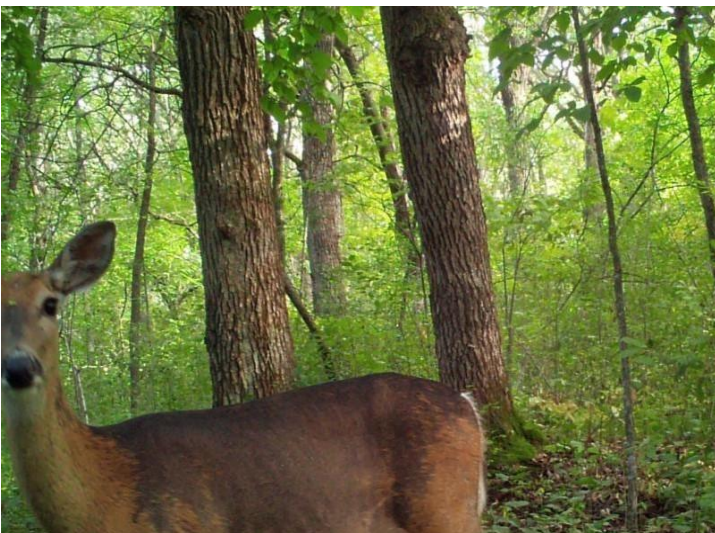
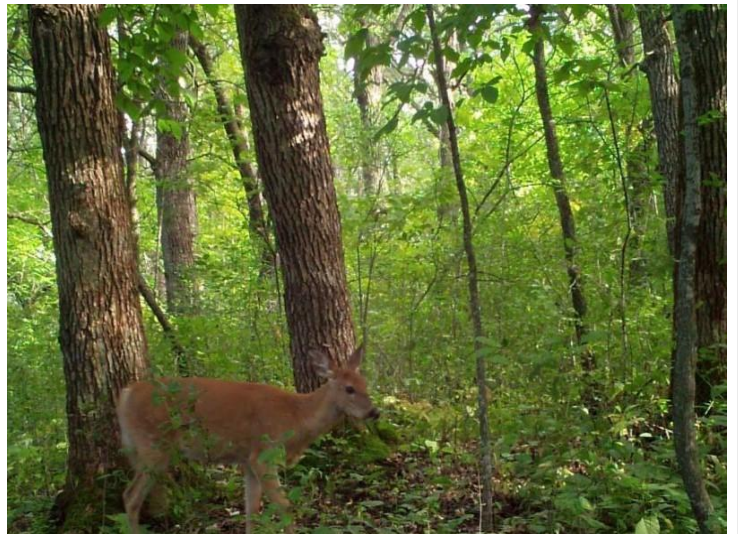
\$109,900
 MLS 6717121 Land
 149XX Co Hwy 30 [D]
 Pelican Rapids MN 56572



website: www.AffinityRealEstate.com | email: info@affinityrealestate.com | office: 218-237-3333 | fax: 218-237-3377



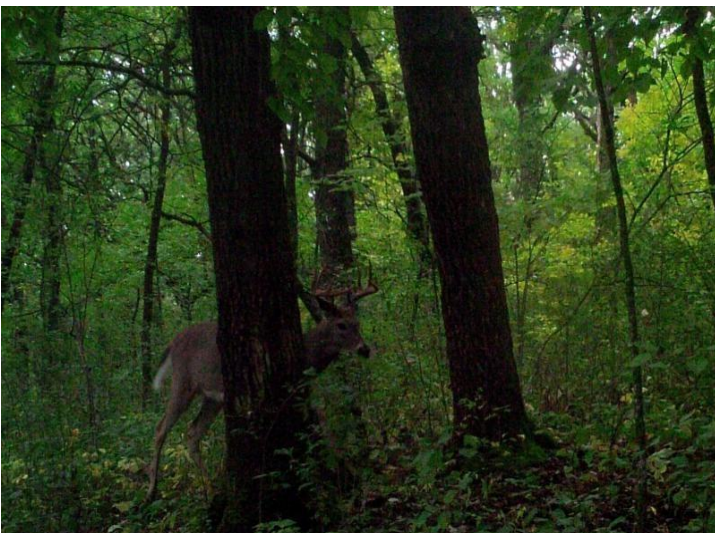
\$109,900
MLS 6717121 Land
149XX Co Hwy 30 [D]
Pelican Rapids MN 56572



website: www.AffinityRealEstate.com | email: info@affinityrealestate.com | office: 218-237-3333 | fax: 218-237-3377



\$109,900
MLS 6717121 Land
149XX Co Hwy 30 [D]
Pelican Rapids MN 56572



website: www.AffinityRealEstate.com | email: info@affinityrealestate.com | office: 218-237-3333 | fax: 218-237-3377



\$109,900
MLS 6717121 Land
149XX Co Hwy 30 [D]
Pelican Rapids MN 56572



website: www.AffinityRealEstate.com | email: info@affinityrealestate.com | office: 218-237-3333 | fax: 218-237-3377



\$109,900
MLS 6717121 Land
149XX Co Hwy 30 [D]
Pelican Rapids MN 56572