



MLS 6717455 Lake Home

\$287,385

900 sq ft
1 bedrooms
1 baths

715 Lake Shore Drive
Bemidji MN 56601

Waterfront: Bemidji (main lake)

Status: Active

Description:

Welcome to Bemidji's premier condominium on the South Shore of Lake Bemidji — The Bixby! Experience luxurious lakeside living with this stunning 1-bedroom, 1-bathroom unit, 'The Schoolcraft,' offering approximately 900 sq ft of thoughtfully designed space. Located on the second floor this residence features south-facing views that flood the interior with natural light. Enjoy modern amenities including secure indoor parking, two elevators for convenient access, triple-pane windows for energy efficiency, soundproof insulation for peaceful living, and private balconies perfect for relaxing. The kitchen boasts elegant quartz countertops and Onyx Shower systems in the bathroom. The association fee covers essential utilities such as natural gas, water, sewer, and refuse, providing you with hassle-free living. Don't miss the opportunity to make this exceptional condo your new lakeside retreat! Contact us today to schedule a showing.

Additional Details:

Year Built	2022
Lot Dimensions	348x228
Garage Stalls	1
School District	31
Taxes	\$3,380
Taxes with Assessments	\$3,380
Tax Year	2025

Additional Features:

Basement: None **Fuel:** Electric **Garage:** 1 **Heat:** Heat Pump **Sewer:** City Sewer/Connected **Water:** City Water/Connected **Air Conditioning:** Heat Pump

Driving Directions:

East on 1st Street to Central Ave SE, Left to Lakeshore Drive



Listed By:
Lake-N-Woods Realty

Affinity Real Estate Inc. participates in the Regional Multiple Listing Service of Minnesota, Inc Broker Reciprocity (sm) program, allowing us to display other broker's listings on our website. All properties are subject to prior sale, change or withdrawal.



Call Affinity Real Estate

218-237-3333

info@affinityrealestate.com



Affinity Real Estate - 600 Park Avenue South - Park Rapids MN 56470



website: www.AffinityRealEstate.com | email: info@affinityrealestate.com | office: 218-237-3333 | fax: 218-237-3377



\$287,385
MLS 6717455 Lake Home
715 Lake Shore Drive
Bemidji MN 56601



website: www.AffinityRealEstate.com | email: info@affinityrealestate.com | office: 218-237-3333 | fax: 218-237-3377



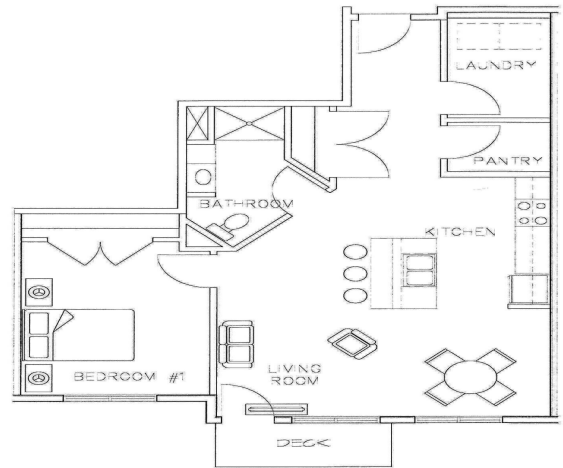
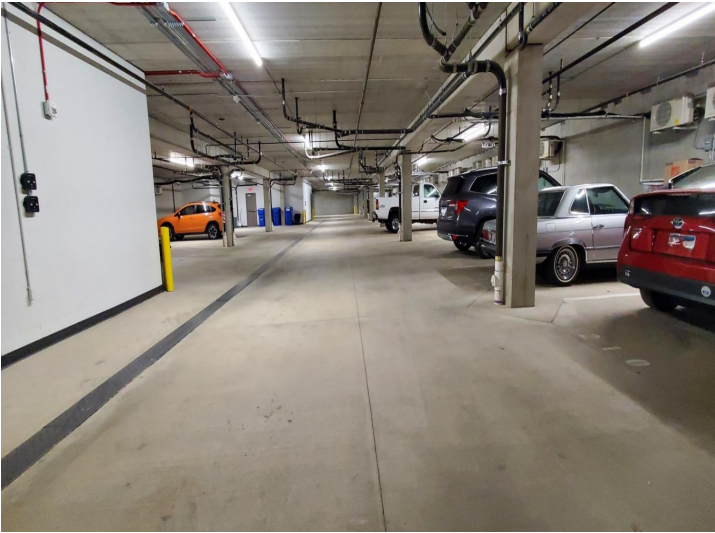
\$287,385
MLS 6717455 Lake Home
715 Lake Shore Drive
Bemidji MN 56601



website: www.AffinityRealEstate.com | email: info@affinityrealestate.com | office: 218-237-3333 | fax: 218-237-3377



\$287,385
 MLS 6717455 Lake Home
 715 Lake Shore Drive
 Bemidji MN 56601



website: www.AffinityRealEstate.com | email: info@affinityrealestate.com | office: 218-237-3333 | fax: 218-237-3377



\$287,385

MLS 6717455 Lake Home
715 Lake Shore Drive
Bemidji MN 56601