



MLS 6717502 Lake Home

**\$379,900**

1,712 sq ft  
4 bedrooms  
2 baths

11954 Lost Paradise Circle  
Bagley MN 56621

Waterfront: Long Lost

Status: Pending

#### Description:

Long Lost Lake paradise in the heart of the White Earth State Forest a/k/a "The Buckboard Hills"!!! 4 bdrm-1 ¾ bath with 330' of lake frontage and almost 3 acres of wooded privacy! This property is one of the rare homes on the lake that is located right off a paved road, making year-round access easy! This is really a neat set-up with having the custom 2 bdrm-1 bath home, then above the garage is another 2 bdrm-3/4 bath guest house! There is a lakeside patio area, the main level of the garage has a hot-tub room, the garage is insulated with a bonus 12' x 18' storage shed for the "toys"! The home has many unique perks! The kitchen is all custom-built with knotty alder, a movable island, no slam drawers, pull-out shelves, granite countertops, and a custom dishwasher. Lakeside living room and bedroom to enjoy the views, along with a warm gas fireplace in the house and a garage living area! Long Lost Lake is well known for its pristine water clarity, great fishing, and tranquil environment without all the boat and jet ski noise due to having a 10 mph speed limit on the lake. There are 1000s of acres of public land, trails, and other lakes in your backyard, plus Itasca Park is just down the road! Properties like this one don't come along very often! ~~~The roll-in dock will be included with the sale of the home

#### Additional Details:

Year Built	1960
Lot Acres	2.85
Lot Dimensions	330x327
Garage Stalls	2
School District	162
Taxes	\$1,568
Taxes with Assessments	\$1,568
Tax Year	2025

#### Additional Features:

**Fuel:** Propane **Heat:** Baseboard, Fireplace(s)

#### Driving Directions:

From Bagley, south on #92 for 16..25 miles, right on CR #39 and go for approx. 8.5 miles, right on Lost Paradise Circle and will be the second home on the right!



Listed By:  
Realty Experts, LLC

Affinity Real Estate Inc. participates in the Regional Multiple Listing Service of Minnesota, Inc Broker Reciprocity (sm) program, allowing us to display other broker's listings on our website. All properties are subject to prior sale, change or withdrawal.



**Call Affinity Real Estate**

**218-237-3333**

**info@affinityrealestate.com**



**Affinity Real Estate - 600 Park Avenue South - Park Rapids MN 56470**



website: [www.AffinityRealEstate.com](http://www.AffinityRealEstate.com) | email: [info@affinityrealestate.com](mailto:info@affinityrealestate.com) | office: 218-237-3333 | fax: 218-237-3377

**Affinity**  
REAL ESTATE INC

**\$379,900**

MLS 6717502 Lake Home  
11954 Lost Paradise Circle  
Bagley MN 56621



website: [www.AffinityRealEstate.com](http://www.AffinityRealEstate.com) | email: [info@affinityrealestate.com](mailto:info@affinityrealestate.com) | office: 218-237-3333 | fax: 218-237-3377



**\$379,900**  
 MLS 6717502 Lake Home  
 11954 Lost Paradise Circle  
 Bagley MN 56621



website: [www.AffinityRealEstate.com](http://www.AffinityRealEstate.com) | email: [info@affinityrealestate.com](mailto:info@affinityrealestate.com) | office: 218-237-3333 | fax: 218-237-3377

**Affinity**  
REAL ESTATE INC

**\$379,900**  
MLS 6717502 Lake Home  
11954 Lost Paradise Circle  
Bagley MN 56621

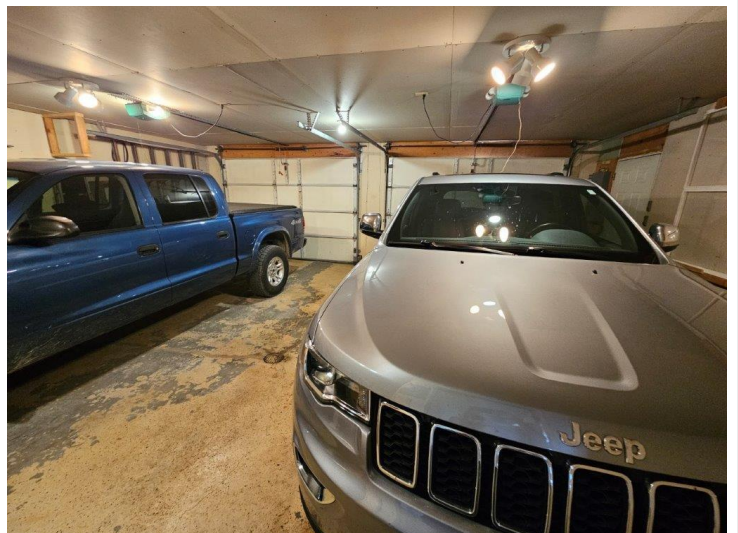
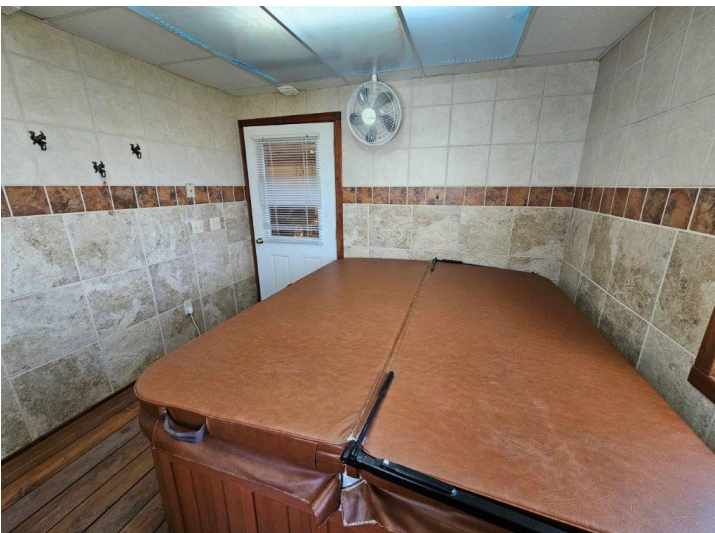


website: [www.AffinityRealEstate.com](http://www.AffinityRealEstate.com) | email: [info@affinityrealestate.com](mailto:info@affinityrealestate.com) | office: 218-237-3333 | fax: 218-237-3377

**Affinity**  
REAL ESTATE INC

**\$379,900**

MLS 6717502 Lake Home  
11954 Lost Paradise Circle  
Bagley MN 56621



website: [www.AffinityRealEstate.com](http://www.AffinityRealEstate.com) | email: [info@affinityrealestate.com](mailto:info@affinityrealestate.com) | office: 218-237-3333 | fax: 218-237-3377



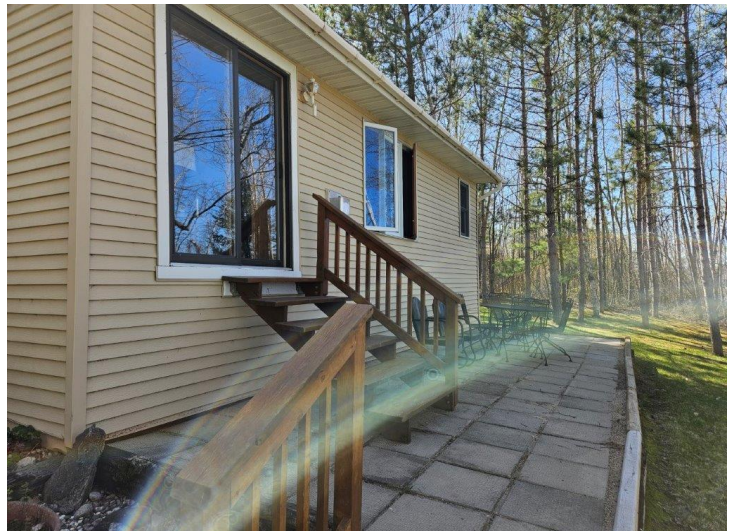
**\$379,900**  
 MLS 6717502 Lake Home  
 11954 Lost Paradise Circle  
 Bagley MN 56621



website: [www.AffinityRealEstate.com](http://www.AffinityRealEstate.com) | email: [info@affinityrealestate.com](mailto:info@affinityrealestate.com) | office: 218-237-3333 | fax: 218-237-3377

**Affinity**  
REAL ESTATE INC

**\$379,900**  
MLS 6717502 Lake Home  
11954 Lost Paradise Circle  
Bagley MN 56621



website: [www.AffinityRealEstate.com](http://www.AffinityRealEstate.com) | email: [info@affinityrealestate.com](mailto:info@affinityrealestate.com) | office: 218-237-3333 | fax: 218-237-3377

**Affinity**  
REAL ESTATE INC

**\$379,900**  
MLS 6717502 Lake Home  
11954 Lost Paradise Circle  
Bagley MN 56621



website: [www.AffinityRealEstate.com](http://www.AffinityRealEstate.com) | email: [info@affinityrealestate.com](mailto:info@affinityrealestate.com) | office: 218-237-3333 | fax: 218-237-3377



**\$379,900**

MLS 6717502 Lake Home  
11954 Lost Paradise Circle  
Bagley MN 56621

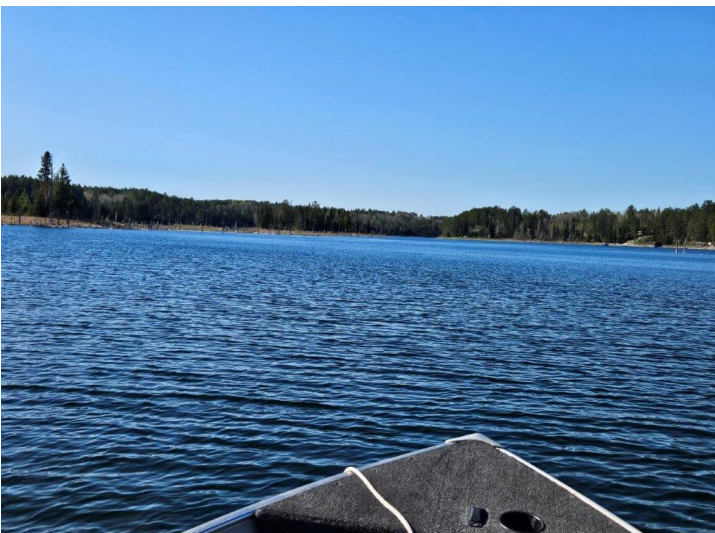


website: [www.AffinityRealEstate.com](http://www.AffinityRealEstate.com) | email: [info@affinityrealestate.com](mailto:info@affinityrealestate.com) | office: 218-237-3333 | fax: 218-237-3377



**\$379,900**

MLS 6717502 Lake Home  
11954 Lost Paradise Circle  
Bagley MN 56621

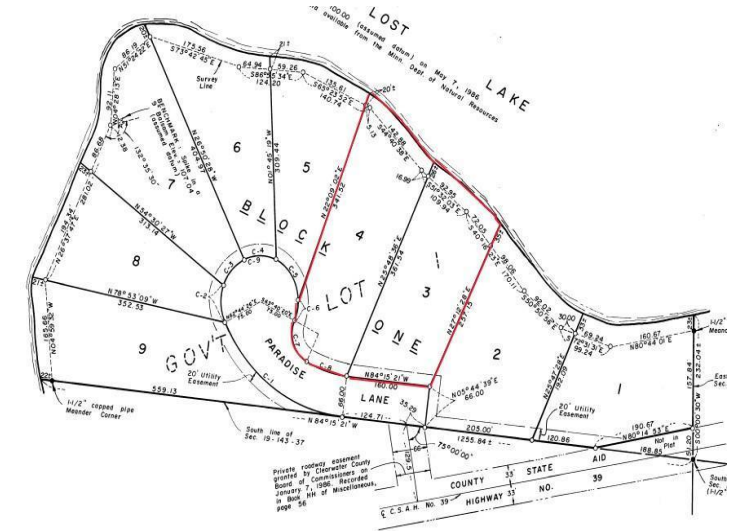
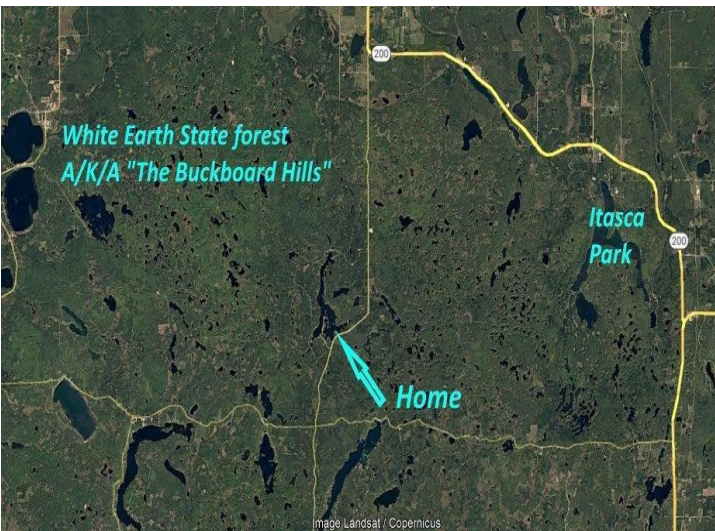


website: [www.AffinityRealEstate.com](http://www.AffinityRealEstate.com) | email: [info@affinityrealestate.com](mailto:info@affinityrealestate.com) | office: 218-237-3333 | fax: 218-237-3377



**\$379,900**

MLS 6717502 Lake Home  
11954 Lost Paradise Circle  
Bagley MN 56621



website: [www.AffinityRealEstate.com](http://www.AffinityRealEstate.com) | email: [info@affinityrealestate.com](mailto:info@affinityrealestate.com) | office: 218-237-3333 | fax: 218-237-3377



**\$379,900**  
 MLS 6717502 Lake Home  
 11954 Lost Paradise Circle  
 Bagley MN 56621

website: [www.AffinityRealEstate.com](http://www.AffinityRealEstate.com) | email: [info@affinityrealestate.com](mailto:info@affinityrealestate.com) | office: 218-237-3333 | fax:218-237-3377



**\$379,900**

MLS 6717502 Lake Home  
11954 Lost Paradise Circle  
Bagley MN 56621