



MLS 6717530 Land

**\$199,900**

25.24 Acres  
Raw Land

TBD 23rd Street  
Bemidji MN 56601

Status: Active

**Description:**

Beautiful 25+ acres with quick access to Bemidji and Cass Lake with 165 acres of state land to the west and south. Wolf and Grace Lakes (plus many others) are nearby for all your water activities. Build your home or cabin in these peaceful acres, or simply enjoy nature as is!

**Additional Details:**

Lot Acres	25.24
Lot Dimensions	irregular
School District	31
Taxes	\$596
Taxes with Assessments	\$596
Tax Year	2025

**Additional Features:**

**Driving Directions:**

Paul Bunyan Dr SE to east on Carr Lake Rd (turns into 23rd St SE), continue to property on the right. If you get to Wolf Lake Dr SE, backup!



Listed By:  
Realty Experts, LLC

Affinity Real Estate Inc. participates in the Regional Multiple Listing Service of Minnesota, Inc Broker Reciprocity (sm) program, allowing us to display other broker's listings on our website. All properties are subject to prior sale, change or withdrawal.



**Call Affinity Real Estate**

**218-237-3333**

**[info@affinityrealestate.com](mailto:info@affinityrealestate.com)**



**Affinity Real Estate - 600 Park Avenue South - Park Rapids MN 56470**





website: [www.AffinityRealEstate.com](http://www.AffinityRealEstate.com) | email: [info@affinityrealestate.com](mailto:info@affinityrealestate.com) | office: 218-237-3333 | fax: 218-237-3377



**\$199,900**  
 MLS 6717530 Land  
 TBD 23rd Street  
 Bemidji MN 56601



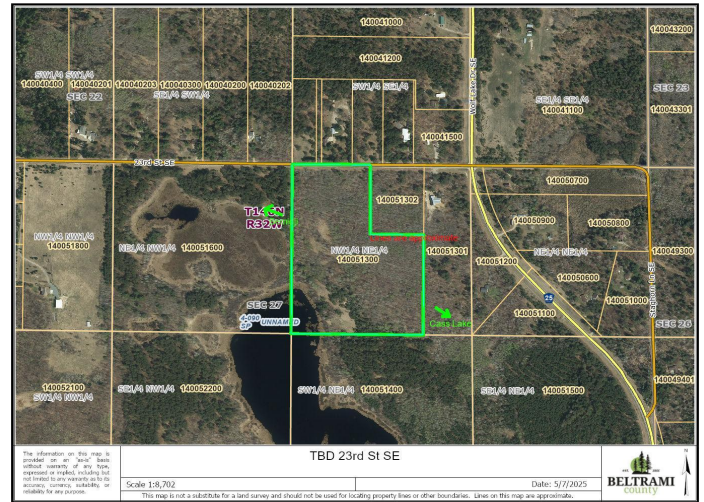


website: [www.AffinityRealEstate.com](http://www.AffinityRealEstate.com) | email: [info@affinityrealestate.com](mailto:info@affinityrealestate.com) | office: 218-237-3333 | fax: 218-237-3377



**\$199,900**  
MLS 6717530 Land  
TBD 23rd Street  
Bemidji MN 56601





website: [www.AffinityRealEstate.com](http://www.AffinityRealEstate.com) | email: [info@affinityrealestate.com](mailto:info@affinityrealestate.com) | office: 218-237-3333 | fax: 218-237-3377



**\$199,900**  
 MLS 6717530 Land  
 TBD 23rd Street  
 Bemidji MN 56601