



MLS 6717593 Lake Home

**\$361,215**

1,162 sq ft  
2 bedrooms  
2 baths

715 Lake Shore Drive  
Bemidji MN 56601

Waterfront: Bemidji (main lake)

Status: Active

#### Description:

Discover Bemidji's premier condominium on the scenic South Shore of Lake Bemidji — The Bixby! This exceptional community offers modern comfort and convenience with amenities including secure indoor parking, two elevators, triple-pane windows, soundproof insulation, and private balconies to enjoy the beautiful surroundings. Interior features quartz countertops and luxurious Onyx shower systems, providing a touch of elegance in every detail. The spacious floor plan, 'The Bemidji,' offers 2 bedrooms and 2 baths across 1,162 square feet, perfect for comfortable living. Unit 207, located on the second floor, offers south-facing views that fill the space with natural light. The association fee covers essential utilities such as natural gas, water, sewer, and refuse, simplifying your living experience. Don't miss the opportunity to make this beautiful condo your new home! Contact us today to schedule a viewing.

#### Additional Details:

Year Built	2022
Lot Dimensions	348x228
Garage Stalls	1
School District	31
Taxes	\$3,956
Taxes with Assessments	\$3,956
Tax Year	2025

#### Additional Features:

**Basement:** None **Fuel:** Electric **Garage:** 1 **Heat:** Heat Pump **Sewer:** City Sewer/Connected **Water:** City Water/Connected **Air Conditioning:** Heat Pump

#### Driving Directions:

East on 1st ST E to Central Ave SE. Left (north) on Central Ave through the traffic circle to Lake Shore Dr NE.



Listed By:  
Lake-N-Woods Realty

Affinity Real Estate Inc. participates in the Regional Multiple Listing Service of Minnesota, Inc Broker Reciprocity (sm) program, allowing us to display other broker's listings on our website. All properties are subject to prior sale, change or withdrawal.



**Call Affinity Real Estate**

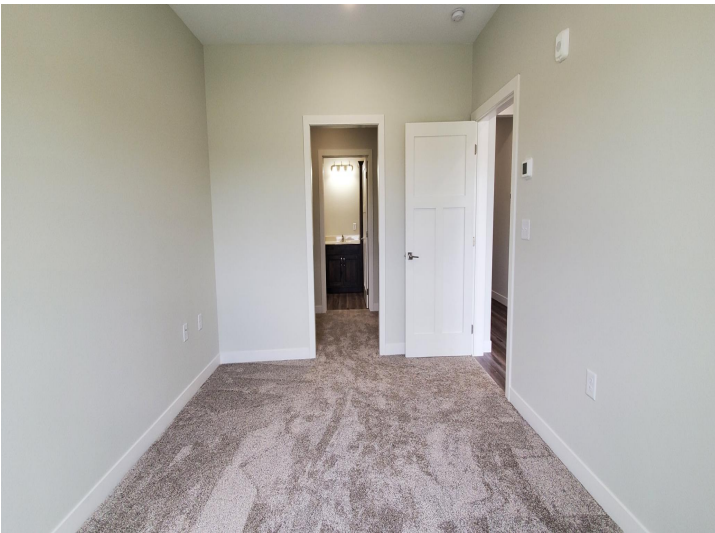
**218-237-3333**

**info@affinityrealestate.com**



**Affinity Real Estate - 600 Park Avenue South - Park Rapids MN 56470**





website: [www.AffinityRealEstate.com](http://www.AffinityRealEstate.com) | email: [info@affinityrealestate.com](mailto:info@affinityrealestate.com) | office: 218-237-3333 | fax: 218-237-3377



**\$361,215**  
 MLS 6717593 Lake Home  
 715 Lake Shore Drive  
 Bemidji MN 56601





website: [www.AffinityRealEstate.com](http://www.AffinityRealEstate.com) | email: [info@affinityrealestate.com](mailto:info@affinityrealestate.com) | office: 218-237-3333 | fax: 218-237-3377

**Affinity**  
REAL ESTATE INC

**\$361,215**  
MLS 6717593 Lake Home  
715 Lake Shore Drive  
Bemidji MN 56601





website: [www.AffinityRealEstate.com](http://www.AffinityRealEstate.com) | email: [info@affinityrealestate.com](mailto:info@affinityrealestate.com) | office: 218-237-3333 | fax: 218-237-3377



**\$361,215**  
 MLS 6717593 Lake Home  
 715 Lake Shore Drive  
 Bemidji MN 56601



website: [www.AffinityRealEstate.com](http://www.AffinityRealEstate.com) | email: [info@affinityrealestate.com](mailto:info@affinityrealestate.com) | office: 218-237-3333 | fax: 218-237-3377



**\$361,215**  
MLS 6717593 Lake Home  
715 Lake Shore Drive  
Bemidji MN 56601