



MLS 6717650 Lake Home

\$150,000

1,800 sq ft
4 bedrooms
3 baths

31347 State Highway 108
Dent MN 56528

Waterfront: Star

Status: Pending

Description:

Morning coffee on the wraparound porch overlooking Star Lake - that's the first thing I thought when visiting this rustic, 20 acre retreat. The home is in great shape and ready for your cosmetic updates. A true farm house kitchen, complete with space for a center island. Spacious bedrooms upstairs featuring large closets, hardwood floors, and a bonus third level attic space that was in the process of being finished. It is rumored that Lawrence Welk performed in the barn at this property (can't confirm, wasn't born). Multiple garages, sheds, and storage on the property. A very short drive to Star Lake access and Bell's Grill.

Additional Details:

Year Built	1908
Lot Acres	20
Lot Dimensions	Irregular
Garage Stalls	6
School District	549
Taxes	\$1,792
Taxes with Assessments	\$1,792
Tax Year	2025

Additional Features:

Basement: Unfinished **Fuel:** Electric, Natural Gas **Garage:** 6 **Heat:** Forced Air, Wood Stove **Sewer:** Tank with Drainage Field **Water:** Well **Air Conditioning:** Central Air

Driving Directions:

395th to hwy 108, east to home on left



Listed By:
Keller Williams Select Realty

Affinity Real Estate Inc. participates in the Regional Multiple Listing Service of Minnesota, Inc Broker Reciprocity (sm) program, allowing us to display other broker's listings on our website. All properties are subject to prior sale, change or withdrawal.



Call Affinity Real Estate

218-237-3333

info@affinityrealestate.com



Affinity Real Estate - 600 Park Avenue South - Park Rapids MN 56470



website: www.AffinityRealEstate.com | email: info@affinityrealestate.com | office: 218-237-3333 | fax: 218-237-3377

Affinity
REAL ESTATE INC

\$150,000
MLS 6717650 Lake Home
31347 State Highway 108
Dent MN 56528



website: www.AffinityRealEstate.com | email: info@affinityrealestate.com | office: 218-237-3333 | fax: 218-237-3377

Affinity
REAL ESTATE INC

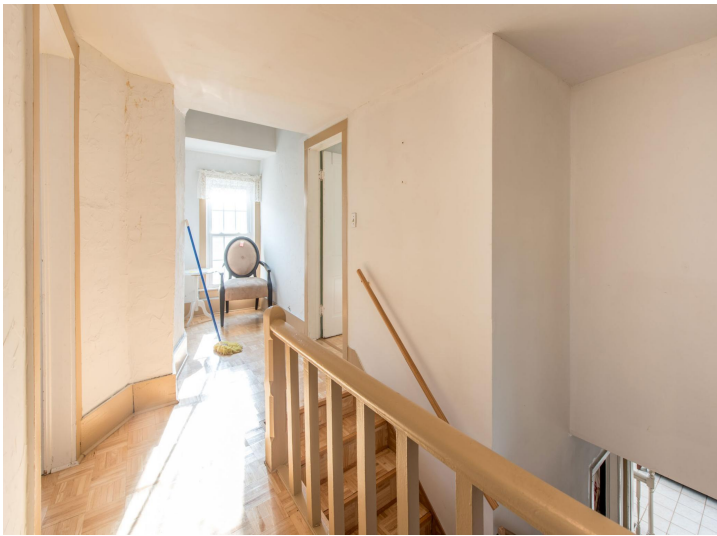
\$150,000
MLS 6717650 Lake Home
31347 State Highway 108
Dent MN 56528



website: www.AffinityRealEstate.com | email: info@affinityrealestate.com | office: 218-237-3333 | fax: 218-237-3377

Affinity
REAL ESTATE INC

\$150,000
MLS 6717650 Lake Home
31347 State Highway 108
Dent MN 56528



website: www.AffinityRealEstate.com | email: info@affinityrealestate.com | office: 218-237-3333 | fax: 218-237-3377

Affinity
REAL ESTATE INC

\$150,000
MLS 6717650 Lake Home
31347 State Highway 108
Dent MN 56528



website: www.AffinityRealEstate.com | email: info@affinityrealestate.com | office: 218-237-3333 | fax: 218-237-3377

Affinity
REAL ESTATE INC

\$150,000
MLS 6717650 Lake Home
31347 State Highway 108
Dent MN 56528



website: www.AffinityRealEstate.com | email: info@affinityrealestate.com | office: 218-237-3333 | fax: 218-237-3377

Affinity
REAL ESTATE INC

\$150,000

MLS 6717650 Lake Home
31347 State Highway 108
Dent MN 56528



website: www.AffinityRealEstate.com | email: info@affinityrealestate.com | office: 218-237-3333 | fax:218-237-3377



\$150,000

MLS 6717650 Lake Home
31347 State Highway 108
Dent MN 56528