



MLS 6717796 Residential

\$284,900

1,900 sq ft
4 bedrooms
2 baths

2832 Timberlane Way
Bemidji MN 56601

Status: Pending

Description:

This property highlights a spacious and private 4BR/2BA home situated in a quiet neighborhood with paved roads, close to schools and shopping. Updated flooring, bathrooms and other useful changes. The large 2.44 acre lot features mature pine, oak, and maple trees, offering privacy and a scenic environment. Highlights include: generous yard perfect for gardening, recreation & a fire circle. 12x16 storage shed for additional storage. Natural gas forced air heating with central air conditioning.

Potential space to build an extra garage. Excellent location with a combination of privacy, convenience, and natural beauty. Affordable living with space to grow!

Additional Details:

Year Built	1992
Lot Acres	2.44
Lot Dimensions	250x425
Garage Stalls	2
School District	31
Taxes	\$2,432
Taxes with Assessments	\$2,432
Tax Year	2025

Additional Features:

Basement: Block, Daylight/Lookout Windows, Egress Window(s), Finished, Full, Storage Space, Tile Shower **Fuel:** Natural Gas **Garage:** 2
Heat: Forced Air **Sewer:** Private Sewer, Tank with Drainage Field **Water:** Submersible - 4 Inch, Drilled, Private, Well **Air Conditioning:** Central Air

Driving Directions:

West on 5th St, south on Jefferson Ave, right on 15th St, right on 2nd entrance to Timberlane Way. #2832 on the right.



Listed By:
Century 21 Dickinson

Affinity Real Estate Inc. participates in the Regional Multiple Listing Service of Minnesota, Inc Broker Reciprocity (sm) program, allowing us to display other broker's listings on our website. All properties are subject to prior sale, change or withdrawal.



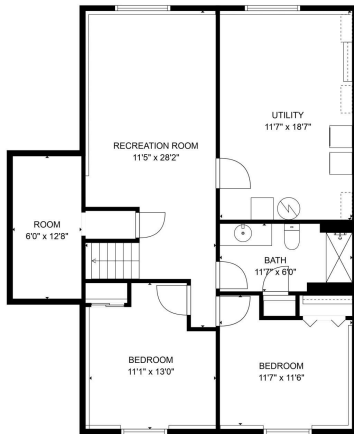
Call Affinity Real Estate

218-237-3333

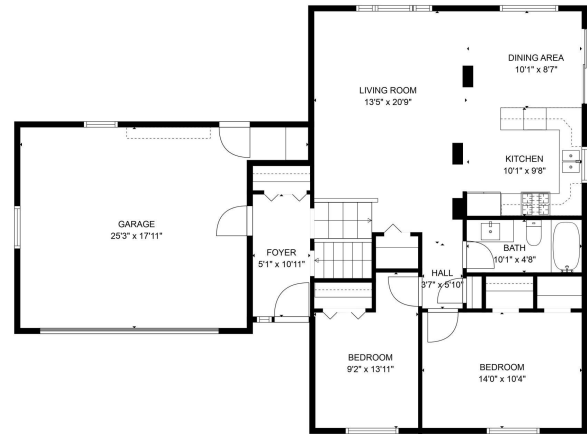
info@affinityrealestate.com



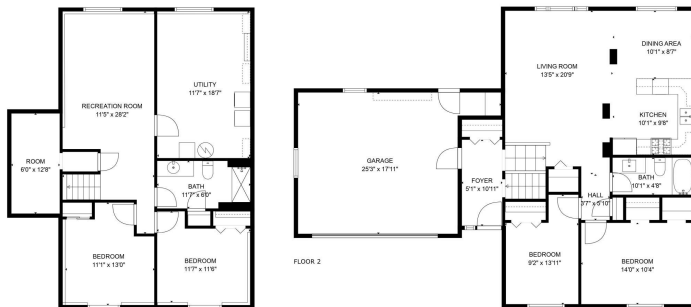
Affinity Real Estate - 600 Park Avenue South - Park Rapids MN 56470



TOTAL: 1818 sq. ft.
BELOW GROUND: 874 sq. ft. FLOOR 2: 944 sq. ft.
EXCLUDED AREAS: LOW CEILING: 77 sq. ft. GARAGE: 372 sq. ft.
FLOOR PLAN CREATED BY CUBICARA APP. MEASUREMENTS DEEMED HIGHLY RELIABLE BUT NOT GUARANTEED.



TOTAL: 1818 sq. ft.
BELOW GROUND: 874 sq. ft. FLOOR 2: 944 sq. ft.
EXCLUDED AREAS: LOW CEILING: 77 sq. ft. GARAGE: 372 sq. ft.
FLOOR PLAN CREATED BY CUBICARA APP. MEASUREMENTS DEEMED HIGHLY RELIABLE BUT NOT GUARANTEED.



FLOOR 1

FLOOR 2

TOTAL: 1818 sq. ft.
BELOW GROUND: 874 sq. ft. FLOOR 2: 944 sq. ft.
EXCLUDED AREAS: LOW CEILING: 77 sq. ft. GARAGE: 372 sq. ft.
FLOOR PLAN CREATED BY CUBICARA APP. MEASUREMENTS DEEMED HIGHLY RELIABLE BUT NOT GUARANTEED.



website: www.AffinityRealEstate.com | email: info@affinityrealestate.com | office: 218-237-3333 | fax: 218-237-3377

Affinity
REAL ESTATE INC

\$284,900
MLS 6717796 Residential
2832 Timberlane Way
Bemidji MN 56601



website: www.AffinityRealEstate.com | email: info@affinityrealestate.com | office: 218-237-3333 | fax: 218-237-3377

Affinity
REAL ESTATE INC

\$284,900
MLS 6717796 Residential
2832 Timberlane Way
Bemidji MN 56601



website: www.AffinityRealEstate.com | email: info@affinityrealestate.com | office: 218-237-3333 | fax: 218-237-3377

Affinity
REAL ESTATE INC

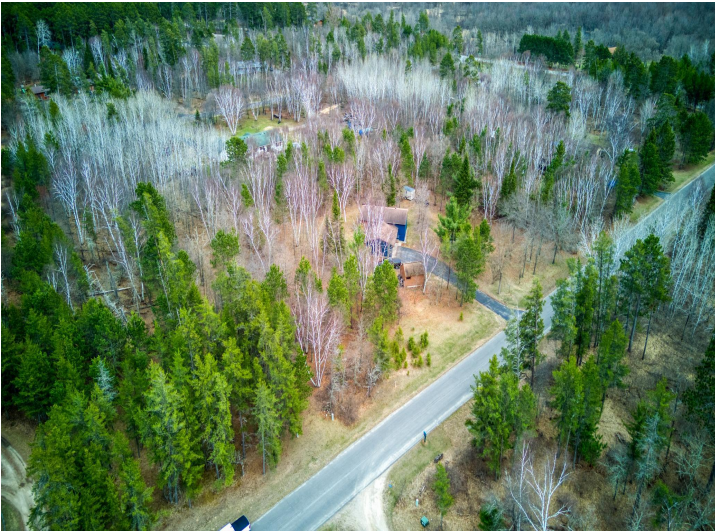
\$284,900
MLS 6717796 Residential
2832 Timberlane Way
Bemidji MN 56601



website: www.AffinityRealEstate.com | email: info@affinityrealestate.com | office: 218-237-3333 | fax: 218-237-3377



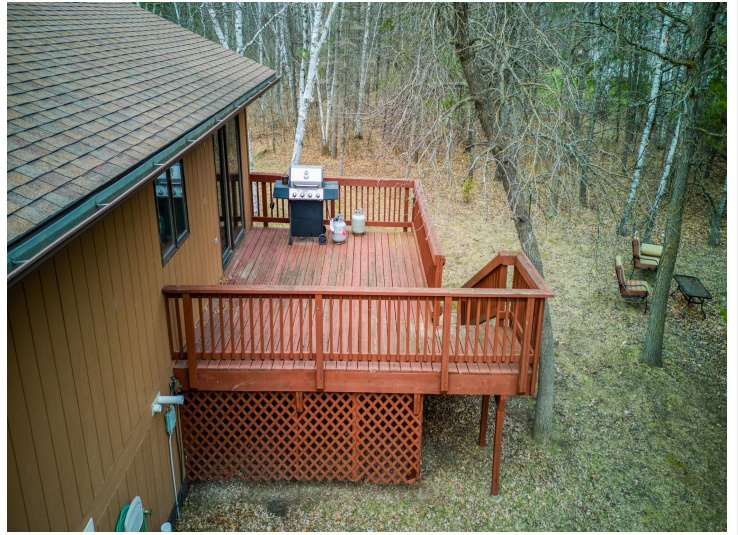
\$284,900
MLS 6717796 Residential
2832 Timberlane Way
Bemidji MN 56601



website: www.AffinityRealEstate.com | email: info@affinityrealestate.com | office: 218-237-3333 | fax: 218-237-3377

Affinity
REAL ESTATE INC

\$284,900
MLS 6717796 Residential
2832 Timberlane Way
Bemidji MN 56601



website: www.AffinityRealEstate.com | email: info@affinityrealestate.com | office: 218-237-3333 | fax: 218-237-3377

Affinity
REAL ESTATE INC

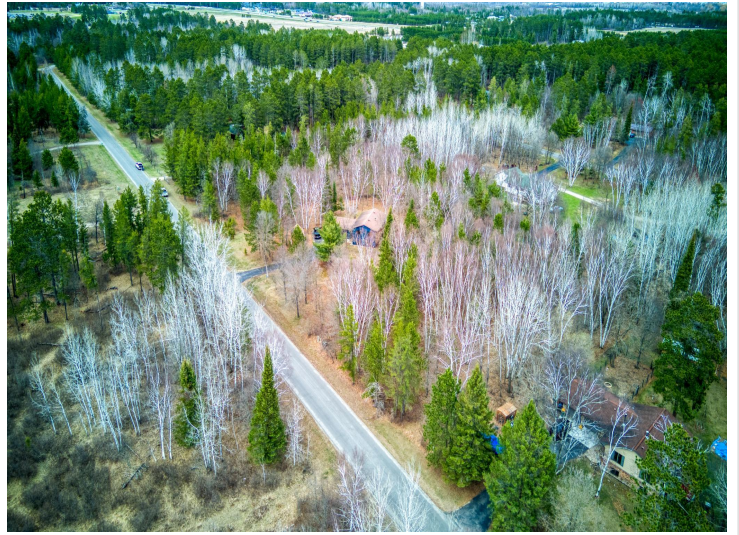
\$284,900
MLS 6717796 Residential
2832 Timberlane Way
Bemidji MN 56601



website: www.AffinityRealEstate.com | email: info@affinityrealestate.com | office: 218-237-3333 | fax: 218-237-3377

Affinity
REAL ESTATE INC

\$284,900
MLS 6717796 Residential
2832 Timberlane Way
Bemidji MN 56601



website: www.AffinityRealEstate.com | email: info@affinityrealestate.com | office: 218-237-3333 | fax: 218-237-3377



\$284,900
MLS 6717796 Residential
2832 Timberlane Way
Bemidji MN 56601