



MLS 6717839 Residential

\$795,000

3,024 sq ft
4 bedrooms
3 baths

8038 Lost Lake Road
Nisswa MN 56468

Status: Active

Description:

Final Opportunities at Spider Lake Preserve on the Gull Lake Chain – Only 3 Lots Remaining!

Experience Gull Lake Chain lifestyle in this exclusive, 35-acre private enclave located in the heart of the Gull Lake Chain. Spider Lake Preserve offers a rare combination of privacy and community, featuring well appointed homes by Thomas Allen Homes. This featured 4-bedroom, 3-bathroom walk-out showcases thoughtful design and premium finishes. The spacious floor plan is perfect for entertaining and the privacy your looking for with guests.

Community Amenities Include: Private Water Access; Dedicated dock area; Lakeside patio with a community firepit; On-site pickleball court; Crushed-granite trail to Gull Lake Chain at Sider Lake. Unbeatable Location: Nestled among the area's premier destinations including Lost Lake Lodge, Causeway on Gull, Bar Harbor, Zorbaz, and championship golf courses. With only three lots left, now is the time to secure your move-in for the 2026 season. Don't miss your chance to own a piece of a private community on the Gull Lake Chain.

Additional Details:

Year Built	2026
Lot Acres	0.23
Lot Dimensions	irr
Garage Stalls	2
School District	896
Taxes	\$220
Taxes with Assessments	\$220
Tax Year	2025

Additional Features:

Fuel: Array **Heat:** Forced Air

Driving Directions:

Brainerd, North on 371 to West on Cty 77 (sportsman corner) to Right on Lost Lake Rd by Zorba's FROM Nisswa, 371 South, west on Cty 77 to right on Lost Lake Rd.s.



Listed By:
Edina Realty, Inc.

Affinity Real Estate Inc. participates in the Regional Multiple Listing Service of Minnesota, Inc Broker Reciprocity (sm) program, allowing us to display other broker's listings on our website. All properties are subject to prior sale, change or withdrawal.



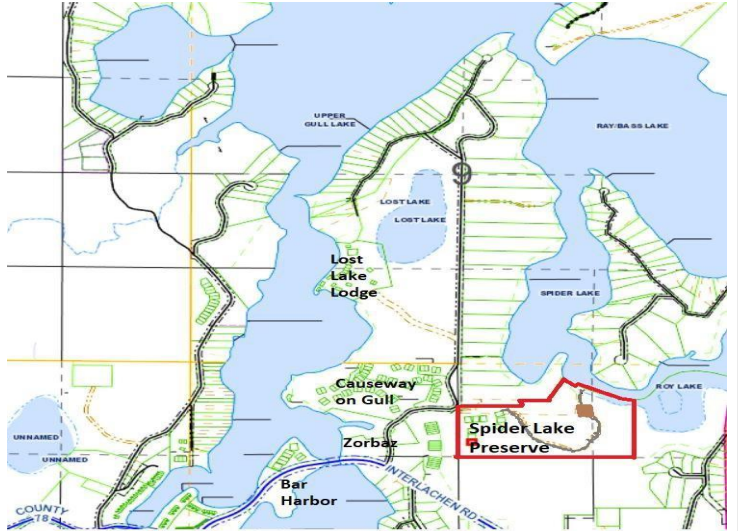
Call Affinity Real Estate

218-237-3333

info@affinityrealestate.com



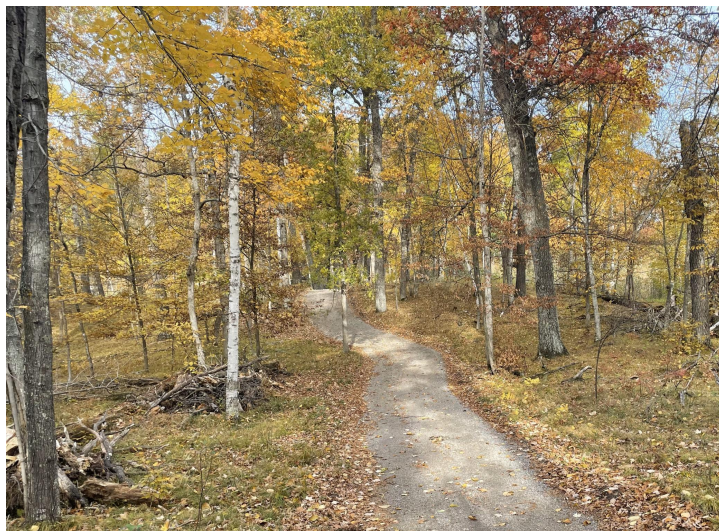
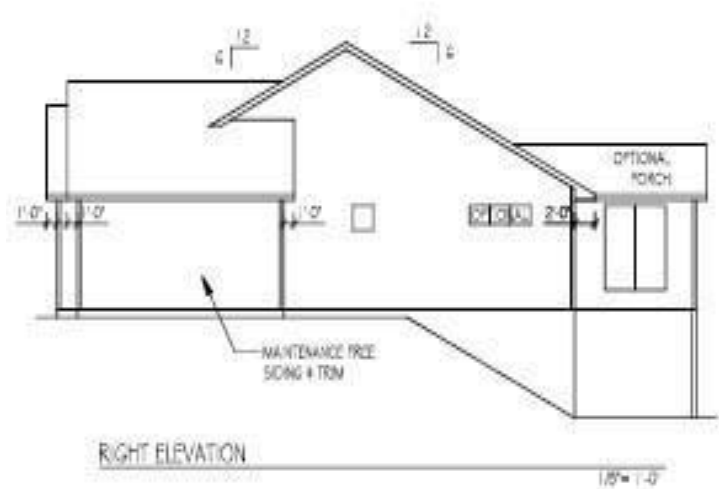
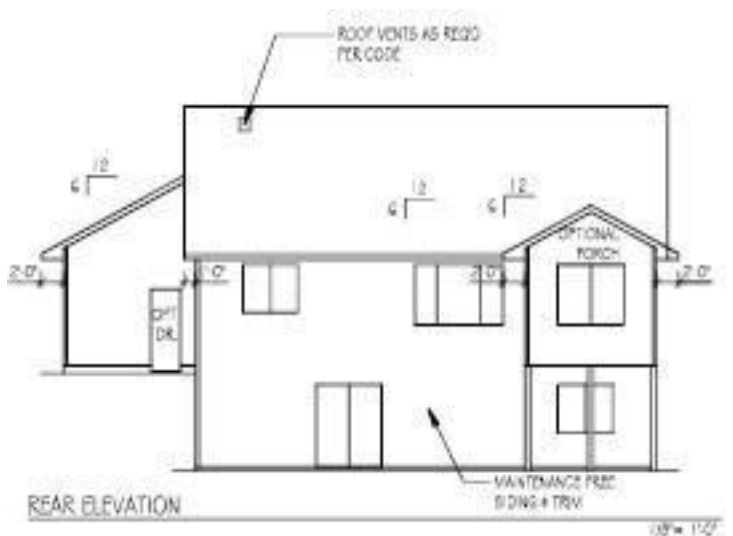
Affinity Real Estate - 600 Park Avenue South - Park Rapids MN 56470



website: www.AffinityRealEstate.com | email: info@affinityrealestate.com | office: 218-237-3333 | fax: 218-237-3377



\$795,000
MLS 6717839 Residential
8038 Lost Lake Road
Nisswa MN 56468



website: www.AffinityRealEstate.com | email: info@affinityrealestate.com | office: 218-237-3333 | fax: 218-237-3377

Affinity
REAL ESTATE INC

\$795,000
MLS 6717839 Residential
8038 Lost Lake Road
Nisswa MN 56468

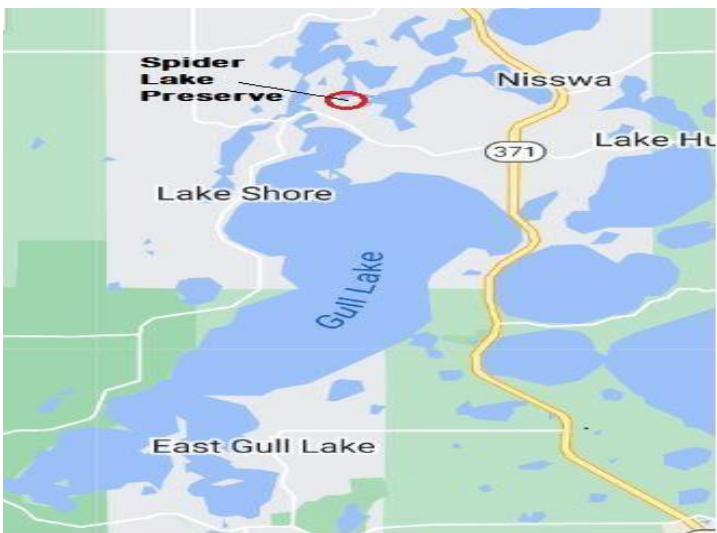


SPIDER LAKE

Preserve

ON THE GULL LAKE CHAIN

Spider Lake on Gull Lake Chain	Outdoor Fireplace
Outdoor Patio	Pickleball Court
Grill/ Cookouts	Cart to Boat or Out for Dinner
Bike in the Beautiful Surroundings	Boat Ramp on Gull Lake
Dining; Zorbaz, Lost Lake Lodge	Great Hiking & Walking



website: www.AffinityRealEstate.com | email: info@affinityrealestate.com | office: 218-237-3333 | fax: 218-237-3377



\$795,000
 MLS 6717839 Residential
 8038 Lost Lake Road
 Nisswa MN 56468



website: www.AffinityRealEstate.com | email: info@affinityrealestate.com | office: 218-237-3333 | fax: 218-237-3377



\$795,000
 MLS 6717839 Residential
 8038 Lost Lake Road
 Nisswa MN 56468



website: www.AffinityRealEstate.com | email: info@affinityrealestate.com | office: 218-237-3333 | fax: 218-237-3377



\$795,000
 MLS 6717839 Residential
 8038 Lost Lake Road
 Nisswa MN 56468



website: www.AffinityRealEstate.com | email: info@affinityrealestate.com | office: 218-237-3333 | fax: 218-237-3377



\$795,000
MLS 6717839 Residential
8038 Lost Lake Road
Nisswa MN 56468