



MLS 6718073 Lake Home

\$455,000

1,632 sq ft
3 bedrooms
2 baths

37855 Height Of Land Drive
Rochert MN 56578

Waterfront: Height of Land

Status: Active

Description:

Year around home on Height of Land Lake located just east of Detroit Lakes. Nice 3 bedroom, 2 bath home situated on 125 ft of level frontage. Awesome large deck for entertaining! Plenty of storage in the 2020 built 24 x 36 sq. ft steel building that is insulated, heated, wired & has a cement floor with floor drain. Beautiful kitchen with stainless appliances & plenty of cabinet storage. New carpet downstairs, new kitchen water filter, & a new tank for the water softener. Lower level bathroom has heated floors. AC! Forced air & Dual Off-Peak electric. Washer & dryer are included. Furniture negotiable. Height of Land borders the Tamarac Wildlife Refuge. Plenty of wildlife. Great fishing lake! Seller sometimes rents on Airbnb so check with listing agent for showings.

Additional Details:

Year Built	2009
Lot Acres	0.75
Lot Dimensions	125x
Garage Stalls	3
School District	23
Taxes	\$2,158
Taxes with Assessments	\$2,218
Tax Year	2024

Additional Features:

Basement: Block, Daylight/Lookout Windows, Egress Window(s), Finished, Full **Fuel:** Electric, Propane **Garage:** 3 **Heat:** Dual, Forced Air
Sewer: Tank with Drainage Field **Water:** Drilled **Air Conditioning:** Central Air

Driving Directions:

From Detroit Lakes go East on 34 to SW Height of Land Dr. turn left & go North. Property on the right.



Listed By:
Counselor Realty Detroit Lakes

Affinity Real Estate Inc. participates in the Regional Multiple Listing Service of Minnesota, Inc Broker Reciprocity (sm) program, allowing us to display other broker's listings on our website. All properties are subject to prior sale, change or withdrawal.



Call Affinity Real Estate

218-237-3333

info@affinityrealestate.com



Affinity Real Estate - 600 Park Avenue South - Park Rapids MN 56470



website: www.AffinityRealEstate.com | email: info@affinityrealestate.com | office: 218-237-3333 | fax: 218-237-3377

Affinity
REAL ESTATE INC

\$455,000
MLS 6718073 Lake Home
37855 Height Of Land Drive
Rochert MN 56578



website: www.AffinityRealEstate.com | email: info@affinityrealestate.com | office: 218-237-3333 | fax: 218-237-3377

Affinity
REAL ESTATE INC

\$455,000

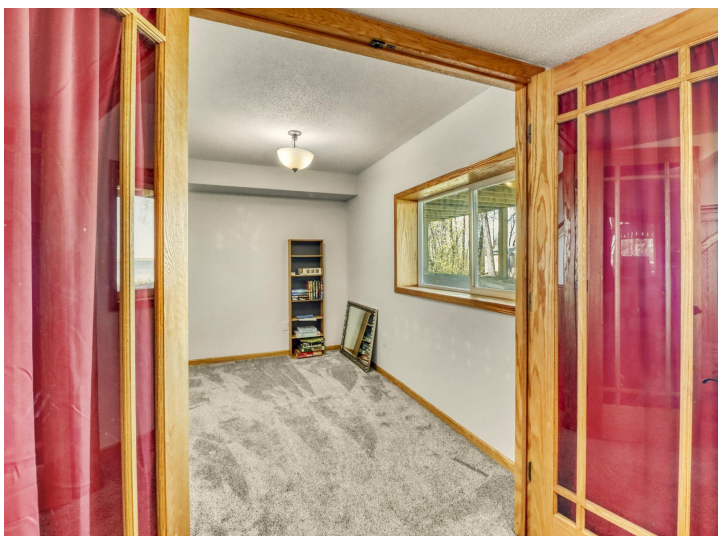
MLS 6718073 Lake Home
37855 Height Of Land Drive
Rochert MN 56578



website: www.AffinityRealEstate.com | email: info@affinityrealestate.com | office: 218-237-3333 | fax: 218-237-3377

Affinity
REAL ESTATE INC

\$455,000
MLS 6718073 Lake Home
37855 Height Of Land Drive
Rochert MN 56578



website: www.AffinityRealEstate.com | email: info@affinityrealestate.com | office: 218-237-3333 | fax: 218-237-3377

Affinity
REAL ESTATE INC

\$455,000

MLS 6718073 Lake Home
37855 Height Of Land Drive
Rochert MN 56578



website: www.AffinityRealEstate.com | email: info@affinityrealestate.com | office: 218-237-3333 | fax: 218-237-3377



\$455,000

MLS 6718073 Lake Home
37855 Height Of Land Drive
Rochert MN 56578



website: www.AffinityRealEstate.com | email: info@affinityrealestate.com | office: 218-237-3333 | fax: 218-237-3377



\$455,000

MLS 6718073 Lake Home
37855 Height Of Land Drive
Rochert MN 56578



website: www.AffinityRealEstate.com | email: info@affinityrealestate.com | office: 218-237-3333 | fax:218-237-3377



\$455,000

MLS 6718073 Lake Home
37855 Height Of Land Drive
Rochert MN 56578