



MLS 6718078 Lake Home

**\$3,000,000**

3,483 sq ft  
4 bedrooms  
4 baths

15464 Birch Narrows Road  
Pequot Lakes MN 56472

Waterfront: Daggett

Status: Active

#### Description:

Exceptional log home on the Whitefish Chain! Discover this meticulously crafted log home nestled on the serene shores of Daggett in Crosslake that sleeps 26! This expansive property offers a harmonious blend of rustic charm and modern amenities, providing an idyllic retreat for family and friends. The main home has 3 bedrooms plus the loft to offer plenty of sleeping space. There is a bonus finished living space above the garage that can offer a potential rental space or just extra room for guests! The boathouse also includes a cozy bedroom for you to curl up lakeside and enjoy the views! Brand new 40 year roofs on all structures. This is a property that offers a ton of flexibility and can be used in multiple ways. This property is being sold turn key. Set up your private tour today and see all the remarkable things this property has to offer!

#### Additional Details:

Year Built	1998
Lot Acres	0.55
Lot Dimensions	127x211x230x97
Garage Stalls	3
School District	186
Taxes	\$10,790
Taxes with Assessments	\$10,790
Tax Year	2024

#### Additional Features:

**Basement:** Full **Fuel:** Natural Gas **Garage:** 3 **Heat:** Forced Air **Sewer:** Tank with Drainage Field **Water:** Well **Air Conditioning:** Central Air

#### Driving Directions:

from county rd 3 turn onto birch narrows road, and property will be on the right.



Listed By:  
Northland Sotheby's International Realty

Affinity Real Estate Inc. participates in the Regional Multiple Listing Service of Minnesota, Inc Broker Reciprocity (sm) program, allowing us to display other broker's listings on our website. All properties are subject to prior sale, change or withdrawal.



**Call Affinity Real Estate**

**218-237-3333**

**info@affinityrealestate.com**



**Affinity Real Estate - 600 Park Avenue South - Park Rapids MN 56470**





website: [www.AffinityRealEstate.com](http://www.AffinityRealEstate.com) | email: [info@affinityrealestate.com](mailto:info@affinityrealestate.com) | office: 218-237-3333 | fax: 218-237-3377



**\$3,000,000**

MLS 6718078 Lake Home  
15464 Birch Narrows Road  
Pequot Lakes MN 56472





website: [www.AffinityRealEstate.com](http://www.AffinityRealEstate.com) | email: [info@affinityrealestate.com](mailto:info@affinityrealestate.com) | office: 218-237-3333 | fax: 218-237-3377

**Affinity**  
REAL ESTATE INC

**\$3,000,000**

MLS 6718078 Lake Home  
15464 Birch Narrows Road  
Pequot Lakes MN 56472





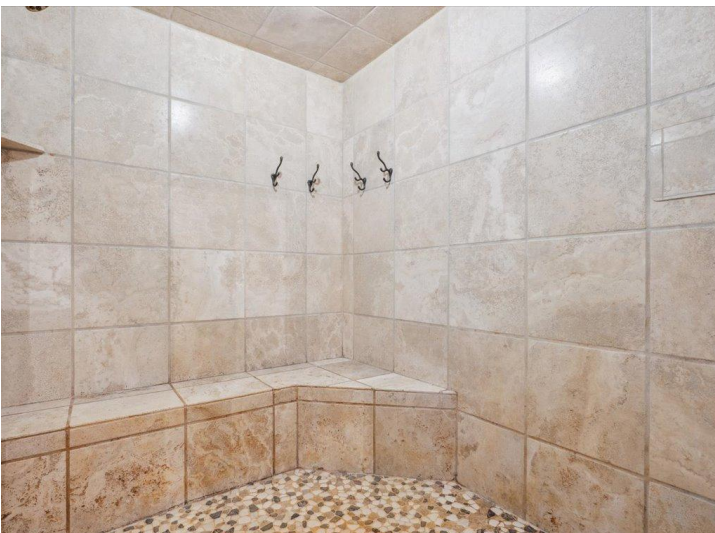
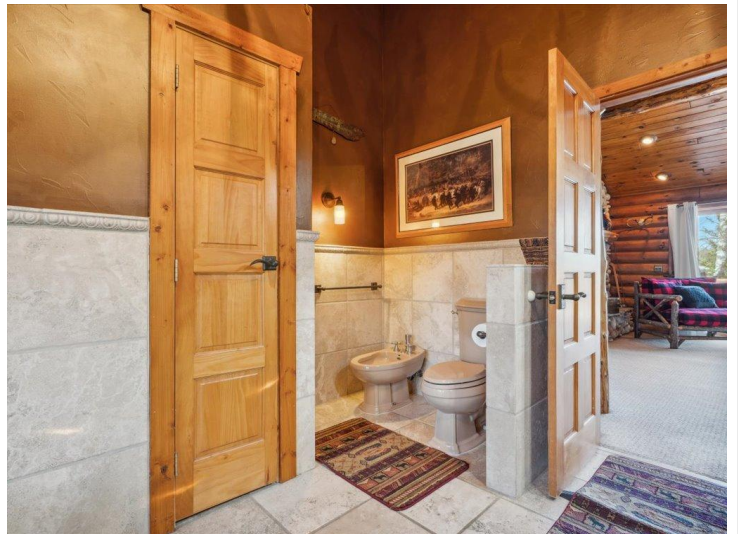
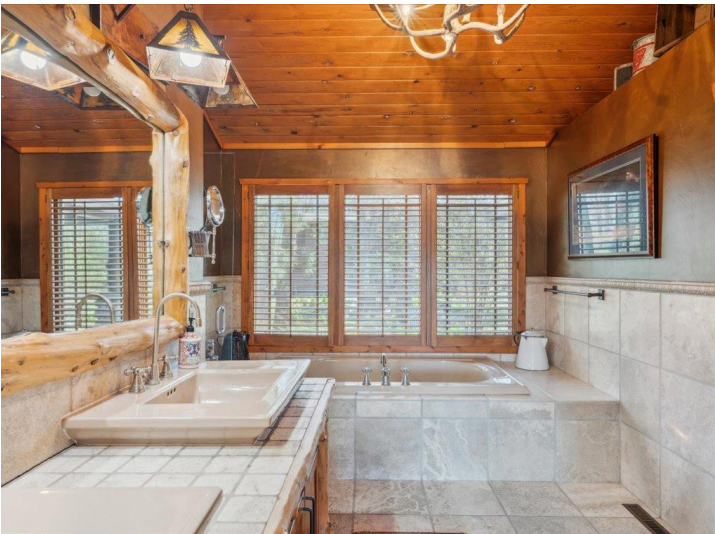
website: [www.AffinityRealEstate.com](http://www.AffinityRealEstate.com) | email: [info@affinityrealestate.com](mailto:info@affinityrealestate.com) | office: 218-237-3333 | fax: 218-237-3377

**Affinity**  
REAL ESTATE INC

**\$3,000,000**

MLS 6718078 Lake Home  
15464 Birch Narrows Road  
Pequot Lakes MN 56472





website: [www.AffinityRealEstate.com](http://www.AffinityRealEstate.com) | email: [info@affinityrealestate.com](mailto:info@affinityrealestate.com) | office: 218-237-3333 | fax: 218-237-3377



**\$3,000,000**

MLS 6718078 Lake Home  
15464 Birch Narrows Road  
Pequot Lakes MN 56472





website: [www.AffinityRealEstate.com](http://www.AffinityRealEstate.com) | email: [info@affinityrealestate.com](mailto:info@affinityrealestate.com) | office: 218-237-3333 | fax: 218-237-3377

**Affinity**  
REAL ESTATE INC

**\$3,000,000**

MLS 6718078 Lake Home  
15464 Birch Narrows Road  
Pequot Lakes MN 56472





website: [www.AffinityRealEstate.com](http://www.AffinityRealEstate.com) | email: [info@affinityrealestate.com](mailto:info@affinityrealestate.com) | office: 218-237-3333 | fax: 218-237-3377

**Affinity**  
REAL ESTATE INC

**\$3,000,000**

MLS 6718078 Lake Home  
15464 Birch Narrows Road  
Pequot Lakes MN 56472





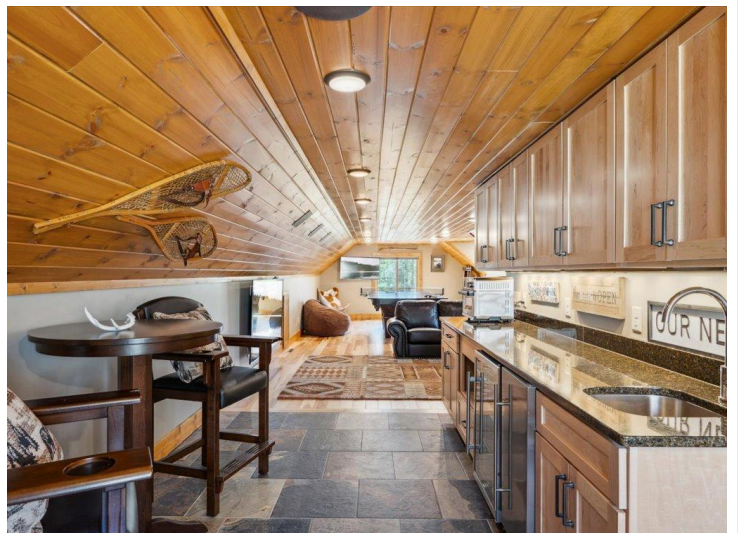
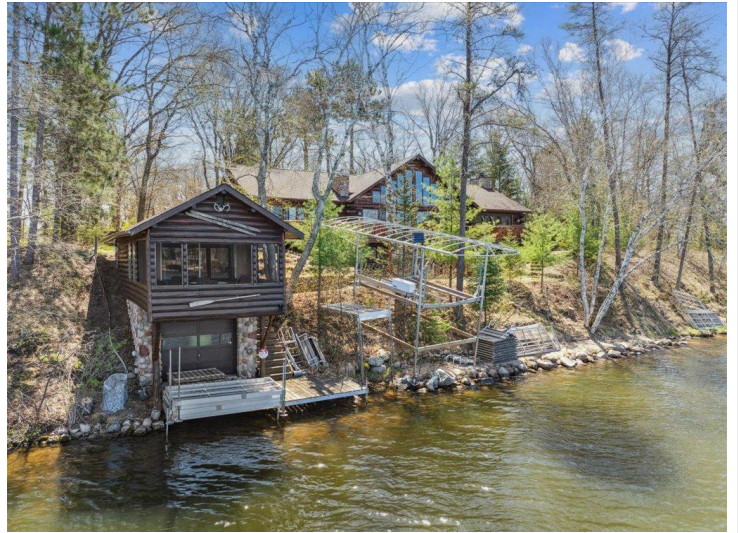
website: [www.AffinityRealEstate.com](http://www.AffinityRealEstate.com) | email: [info@affinityrealestate.com](mailto:info@affinityrealestate.com) | office: 218-237-3333 | fax: 218-237-3377



**\$3,000,000**

MLS 6718078 Lake Home  
15464 Birch Narrows Road  
Pequot Lakes MN 56472





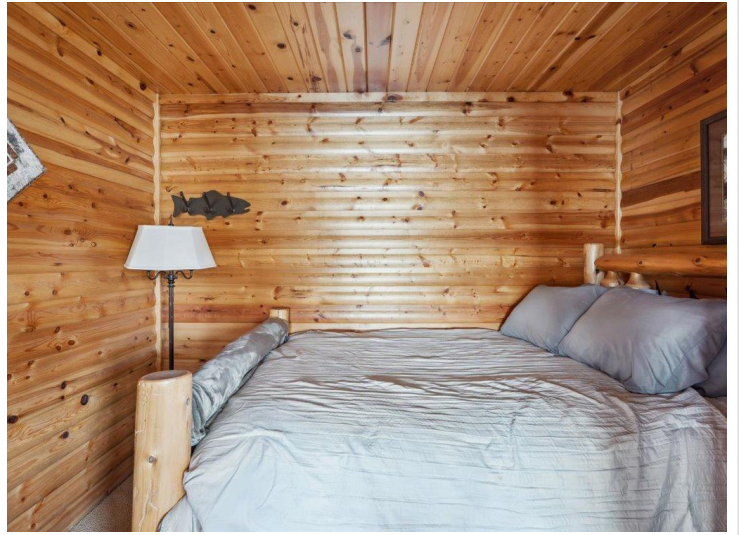
website: [www.AffinityRealEstate.com](http://www.AffinityRealEstate.com) | email: [info@affinityrealestate.com](mailto:info@affinityrealestate.com) | office: 218-237-3333 | fax: 218-237-3377

**Affinity**  
REAL ESTATE INC

**\$3,000,000**

MLS 6718078 Lake Home  
15464 Birch Narrows Road  
Pequot Lakes MN 56472





website: [www.AffinityRealEstate.com](http://www.AffinityRealEstate.com) | email: [info@affinityrealestate.com](mailto:info@affinityrealestate.com) | office: 218-237-3333 | fax: 218-237-3377



**\$3,000,000**

MLS 6718078 Lake Home  
15464 Birch Narrows Road  
Pequot Lakes MN 56472





website: [www.AffinityRealEstate.com](http://www.AffinityRealEstate.com) | email: [info@affinityrealestate.com](mailto:info@affinityrealestate.com) | office: 218-237-3333 | fax: 218-237-3377



**\$3,000,000**

MLS 6718078 Lake Home  
15464 Birch Narrows Road  
Pequot Lakes MN 56472