



MLS 6718336 Lake Home

**\$360,000**

1,200 sq ft  
2 bedrooms  
1 baths

33352 County 28  
Motley MN 56466

Waterfront: Long Prairie River

Status: Active

**Description:**

SEPTIC COMPLIANT. Recreational activities are limitless on this 48 acre property with 210' of frontage on the Long Prairie River! Enjoy hunting, fishing, floating down the river, or simply relax and observe the local wildlife. The home features 2 bedrooms and 1 bathroom with in-floor heat throughout for your comfort, along with an attached garage with in-floor heat. Additionally, there is a 48'x32' pole building with a 24'x10' lean-to for extra storage space. Home is being sold "As Is".

**Additional Details:**

Year Built	2006
Lot Acres	47.55
Lot Dimensions	4085x200x1300x470x2700x520
Garage Stalls	2
School District	2170
Taxes	\$1,990
Taxes with Assessments	\$2,044
Tax Year	2025

**Additional Features:**

**Basement:** None **Fuel:** Electric, Wood **Garage:** 2 **Heat:** Boiler, Fireplace(s), Radiant Floor **Sewer:** Private Sewer, Septic System Compliant - Yes **Water:** Private, Sand Point **Air Conditioning:** Window Unit(s)

**Driving Directions:**

From Motley East on 10 to County 28. Right on County 28 to 33352.



Listed By:  
Wolff & Simon Real Estate

Affinity Real Estate Inc. participates in the Regional Multiple Listing Service of Minnesota, Inc Broker Reciprocity (sm) program, allowing us to display other broker's listings on our website. All properties are subject to prior sale, change or withdrawal.



**Call Affinity Real Estate**

**218-237-3333**

**info@affinityrealestate.com**



**Affinity Real Estate - 600 Park Avenue South - Park Rapids MN 56470**





website: [www.AffinityRealEstate.com](http://www.AffinityRealEstate.com) | email: [info@affinityrealestate.com](mailto:info@affinityrealestate.com) | office: 218-237-3333 | fax: 218-237-3377

**Affinity**  
REAL ESTATE INC

**\$360,000**

MLS 6718336 Lake Home  
33352 County 28  
Motley MN 56466





website: [www.AffinityRealEstate.com](http://www.AffinityRealEstate.com) | email: [info@affinityrealestate.com](mailto:info@affinityrealestate.com) | office: 218-237-3333 | fax: 218-237-3377

**Affinity**  
REAL ESTATE INC

**\$360,000**  
MLS 6718336 Lake Home  
33352 County 28  
Motley MN 56466





website: [www.AffinityRealEstate.com](http://www.AffinityRealEstate.com) | email: [info@affinityrealestate.com](mailto:info@affinityrealestate.com) | office: 218-237-3333 | fax: 218-237-3377



**\$360,000**  
 MLS 6718336 Lake Home  
 33352 County 28  
 Motley MN 56466



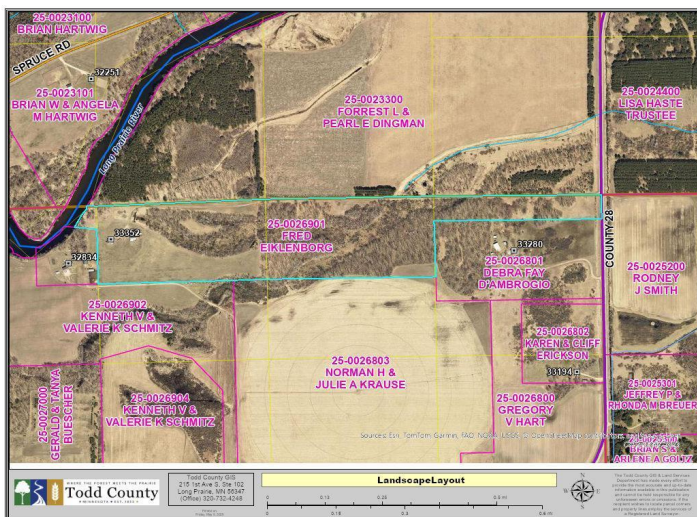


website: [www.AffinityRealEstate.com](http://www.AffinityRealEstate.com) | email: [info@affinityrealestate.com](mailto:info@affinityrealestate.com) | office: 218-237-3333 | fax: 218-237-3377



**\$360,000**  
 MLS 6718336 Lake Home  
 33352 County 28  
 Motley MN 56466





website: [www.AffinityRealEstate.com](http://www.AffinityRealEstate.com) | email: [info@affinityrealestate.com](mailto:info@affinityrealestate.com) | office: 218-237-3333 | fax: 218-237-3377

**Affinity**  
REAL ESTATE INC

**\$360,000**  
MLS 6718336 Lake Home  
33352 County 28  
Motley MN 56466