



MLS 6718756 Residential

\$479,000

3,146 sq ft
3 bedrooms
4 baths

12128 County Road 30
Staples MN 56479

Status: Pending

Description:

From the welcoming porch to the balcony overlooking the skylit living room, this 4 bedroom (lower level needs egress) beauty is loaded with sunny appeal. An elegant, bayed formal dining room adjoins the centrally located island kitchen, which features easy access to the sunny porch. A short hall leads past the laundry and powder room to a spacious living room with a gorgeous brick fireplace. Walk under the balcony to the first-floor primary suite with a walk-in closet and luxury bath. The second floor looks over the living room and offers 2 bedrooms and full bathroom. The lower level is a special retreat that offers a large family room with fireplace, bedroom, 3/4 bathroom, utility and a walk-out to the garage. Other features include: 26x30 heated detached garage; 24x24 heated attached garage; 10x17 sunroom and 17x25 patio area. This home is located on 10.74 acres with close proximity to the Crow Wing River and The Vintage Golf Course!

Additional Details:

Year Built	1991
Lot Acres	10.74
Lot Dimensions	730x500x204x633x172x1078
Garage Stalls	4
School District	2170
Taxes	\$4,734
Taxes with Assessments	\$4,734
Tax Year	2025

Additional Features:

Basement: Block, Daylight/Lookout Windows, Drain Tiled, Egress Window(s), Finished, Full, Sump Pump, Walkout **Fuel:** Electric, Propane, Wood
Garage: 4 **Heat:** Dual, Forced Air **Sewer:** Mound Septic, Private Sewer **Water:** Drilled **Air Conditioning:** Central Air

Driving Directions:

North of Staples on Airport Road for 1.5 mi.; Right on Co Rd 30 for 1.1 mi. to property on Right.



Listed By:
Edina Realty, Inc.

Affinity Real Estate Inc. participates in the Regional Multiple Listing Service of Minnesota, Inc Broker Reciprocity (sm) program, allowing us to display other broker's listings on our website. All properties are subject to prior sale, change or withdrawal.



Call Affinity Real Estate

218-237-3333

info@affinityrealestate.com



Affinity Real Estate - 600 Park Avenue South - Park Rapids MN 56470



website: www.AffinityRealEstate.com | email: info@affinityrealestate.com | office: 218-237-3333 | fax: 218-237-3377

Affinity
REAL ESTATE INC

\$479,000
MLS 6718756 Residential
12128 County Road 30
Staples MN 56479

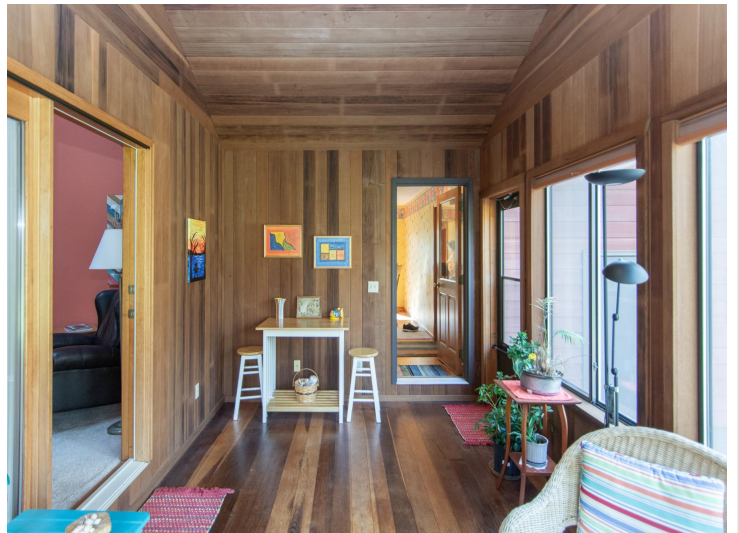


website: www.AffinityRealEstate.com | email: info@affinityrealestate.com | office: 218-237-3333 | fax: 218-237-3377

Affinity
REAL ESTATE INC

\$479,000

MLS 6718756 Residential
12128 County Road 30
Staples MN 56479



website: www.AffinityRealEstate.com | email: info@affinityrealestate.com | office: 218-237-3333 | fax: 218-237-3377

Affinity
REAL ESTATE INC

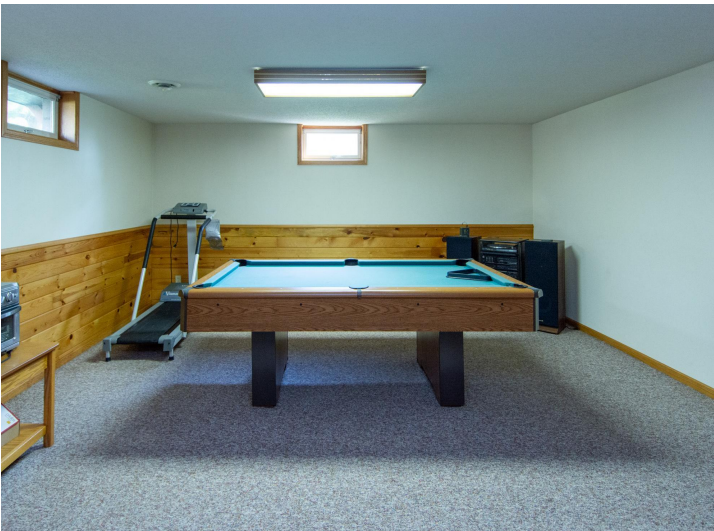
\$479,000
MLS 6718756 Residential
12128 County Road 30
Staples MN 56479



website: www.AffinityRealEstate.com | email: info@affinityrealestate.com | office: 218-237-3333 | fax: 218-237-3377

Affinity
REAL ESTATE INC

\$479,000
MLS 6718756 Residential
12128 County Road 30
Staples MN 56479



website: www.AffinityRealEstate.com | email: info@affinityrealestate.com | office: 218-237-3333 | fax: 218-237-3377



\$479,000
MLS 6718756 Residential
12128 County Road 30
Staples MN 56479



website: www.AffinityRealEstate.com | email: info@affinityrealestate.com | office: 218-237-3333 | fax: 218-237-3377

Affinity
REAL ESTATE INC

\$479,000
MLS 6718756 Residential
12128 County Road 30
Staples MN 56479



website: www.AffinityRealEstate.com | email: info@affinityrealestate.com | office: 218-237-3333 | fax: 218-237-3377



\$479,000
MLS 6718756 Residential
12128 County Road 30
Staples MN 56479