



MLS 6718787 Residential

**\$189,900**

2,370 sq ft  
3 bedrooms  
2 baths

4725 Bemidji Avenue  
Bemidji MN 56601

Status: Active

#### Description:

Charming Cape Cod Home – A Perfect Blend of Character & Comfort on a large lot close to town! Discover the warmth and beauty of this handsome home, brimming with charm and unique features! Nestled on a private .7-acre lot, this property boasts beautiful mature trees, offering a peaceful and inviting atmosphere while being just minutes from town. Inside, the fieldstone fireplace sets the perfect ambiance in the spacious living area, accented by wooden beams for added character. The bright and expansive kitchen is ideal for cooking and entertaining, while the huge main-floor entertainment room provides flexibility—use part of it as a dining area or a cozy gathering spot. With 3 bedrooms and 2 bathrooms, this home offers a spacious find. Thoughtful details like a built-in bookshelf, main-floor laundry, and garage space with workspace add to its appeal. Enjoy the beauty and privacy of the backyard, perfect for relaxation or outdoor activities. Plus, natural gas heating ensures efficiency and affordability year-round. Experience country-like tranquility with the convenience Lake Bemidji public access very near. This home is a true gem!

#### Additional Details:

Year Built	1930
Lot Acres	0.7
Lot Dimensions	194x171
Garage Stalls	1
School District	31
Taxes	\$2,132
Taxes with Assessments	\$2,132
Tax Year	2025

#### Additional Features:

**Basement:** Partial, Concrete, Unfinished **Fuel:** Natural Gas **Garage:** 1 **Heat:** Forced Air, Heat Pump **Sewer:** Private Sewer **Water:** Private, Well  
**Air Conditioning:** Central Air

#### Driving Directions:

From Town go North on Bemidji Ave. Home is on the Left.



Listed By:  
Headwaters Realty Services LLC

Affinity Real Estate Inc. participates in the Regional Multiple Listing Service of Minnesota, Inc Broker Reciprocity (sm) program, allowing us to display other broker's listings on our website. All properties are subject to prior sale, change or withdrawal.



Call Affinity Real Estate

**218-237-3333**

[info@affinityrealestate.com](mailto:info@affinityrealestate.com)



Affinity Real Estate - 600 Park Avenue South - Park Rapids MN 56470





website: [www.AffinityRealEstate.com](http://www.AffinityRealEstate.com) | email: [info@affinityrealestate.com](mailto:info@affinityrealestate.com) | office: 218-237-3333 | fax: 218-237-3377

**Affinity**  
REAL ESTATE INC

**\$189,900**  
MLS 6718787 Residential  
4725 Bemidji Avenue  
Bemidji MN 56601





website: [www.AffinityRealEstate.com](http://www.AffinityRealEstate.com) | email: [info@affinityrealestate.com](mailto:info@affinityrealestate.com) | office: 218-237-3333 | fax: 218-237-3377

**Affinity**  
REAL ESTATE INC

**\$189,900**  
MLS 6718787 Residential  
4725 Bemidji Avenue  
Bemidji MN 56601



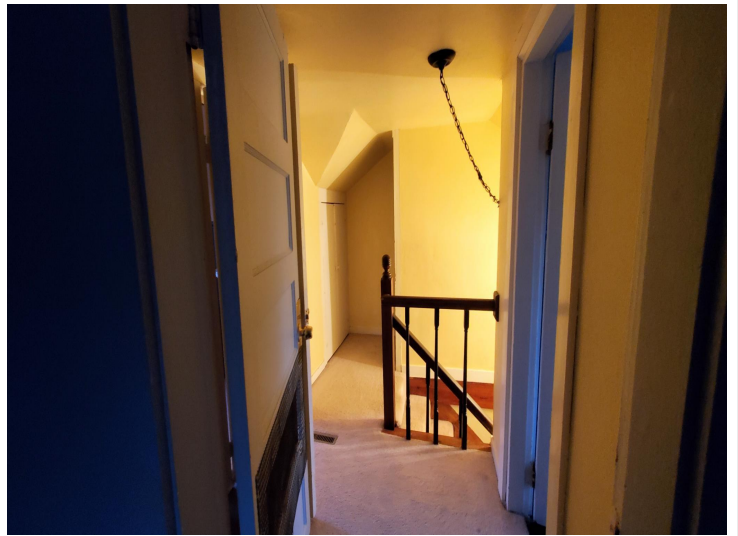


website: [www.AffinityRealEstate.com](http://www.AffinityRealEstate.com) | email: [info@affinityrealestate.com](mailto:info@affinityrealestate.com) | office: 218-237-3333 | fax: 218-237-3377

**Affinity**  
REAL ESTATE INC

**\$189,900**  
MLS 6718787 Residential  
4725 Bemidji Avenue  
Bemidji MN 56601



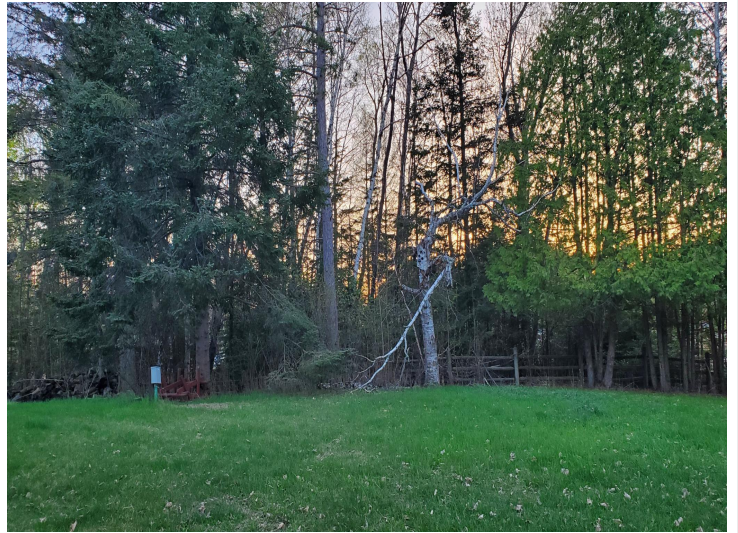


website: [www.AffinityRealEstate.com](http://www.AffinityRealEstate.com) | email: [info@affinityrealestate.com](mailto:info@affinityrealestate.com) | office: 218-237-3333 | fax: 218-237-3377



**\$189,900**  
 MLS 6718787 Residential  
 4725 Bemidji Avenue  
 Bemidji MN 56601





website: [www.AffinityRealEstate.com](http://www.AffinityRealEstate.com) | email: [info@affinityrealestate.com](mailto:info@affinityrealestate.com) | office: 218-237-3333 | fax: 218-237-3377

**Affinity**  
REAL ESTATE INC

**\$189,900**  
MLS 6718787 Residential  
4725 Bemidji Avenue  
Bemidji MN 56601