



MLS 6718908 Residential

\$500,000

3,180 sq ft
4 bedrooms
3 baths

19273 Echo Ridge Drive
Nevis MN 56467

Status: Pending

Description:

This beautifully crafted country home just outside of Nevis offers quality construction and a spacious, open layout. Step inside to find vaulted wood ceilings, hardwood floors, and an inviting living area centered around a stunning stone fireplace. The expansive primary suite includes a large walk-in closet and a luxurious bathroom with a tile shower and jacuzzi tub. The main floor also offers a dedicated office, half bathroom, a mudroom with garage access, and patio doors that lead to a massive deck, perfect for entertaining or relaxing. The walkout basement features a second fireplace in the cozy family room, a wet bar, three additional bedrooms, a full bathroom, and a utility room. Outside, enjoy the convenience of a 28x28 attached garage and a garden shed, all set on a private 2.77-acre lot. This is high-quality country living you won't want to miss!

Additional Details:

Year Built	2004
Lot Acres	2.77
Lot Dimensions	440x291x464x345
Garage Stalls	2
School District	308
Taxes	\$2,867
Taxes with Assessments	\$3,088
Tax Year	2025

Additional Features:

Fuel: Electric, Propane **Heat:** Baseboard, Boiler, Ductless Mini-Split, Fireplace(s), Radiant Floor

Driving Directions:

From Nevis head west on 34 for 1.5 miles and turn left on Echo Ridge Dr for .6 miles. Look for signs and stay right on Echo Ridge Dr. House is on the left.



Listed By:
Keller Williams Realty Professionals

Affinity Real Estate Inc. participates in the Regional Multiple Listing Service of Minnesota, Inc Broker Reciprocity (sm) program, allowing us to display other broker's listings on our website. All properties are subject to prior sale, change or withdrawal.



Call Affinity Real Estate

218-237-3333

info@affinityrealestate.com



Affinity Real Estate - 600 Park Avenue South - Park Rapids MN 56470



website: www.AffinityRealEstate.com | email: info@affinityrealestate.com | office: 218-237-3333 | fax: 218-237-3377



\$500,000
 MLS 6718908 Residential
 19273 Echo Ridge Drive
 Nevis MN 56467



website: www.AffinityRealEstate.com | email: info@affinityrealestate.com | office: 218-237-3333 | fax: 218-237-3377

Affinity
REAL ESTATE INC

\$500,000
MLS 6718908 Residential
19273 Echo Ridge Drive
Nevis MN 56467



website: www.AffinityRealEstate.com | email: info@affinityrealestate.com | office: 218-237-3333 | fax: 218-237-3377

Affinity
REAL ESTATE INC

\$500,000
MLS 6718908 Residential
19273 Echo Ridge Drive
Nevis MN 56467



website: www.AffinityRealEstate.com | email: info@affinityrealestate.com | office: 218-237-3333 | fax: 218-237-3377

Affinity
REAL ESTATE INC

\$500,000
MLS 6718908 Residential
19273 Echo Ridge Drive
Nevis MN 56467



website: www.AffinityRealEstate.com | email: info@affinityrealestate.com | office: 218-237-3333 | fax: 218-237-3377

Affinity
REAL ESTATE INC

\$500,000
MLS 6718908 Residential
19273 Echo Ridge Drive
Nevis MN 56467



website: www.AffinityRealEstate.com | email: info@affinityrealestate.com | office: 218-237-3333 | fax: 218-237-3377

Affinity
REAL ESTATE INC

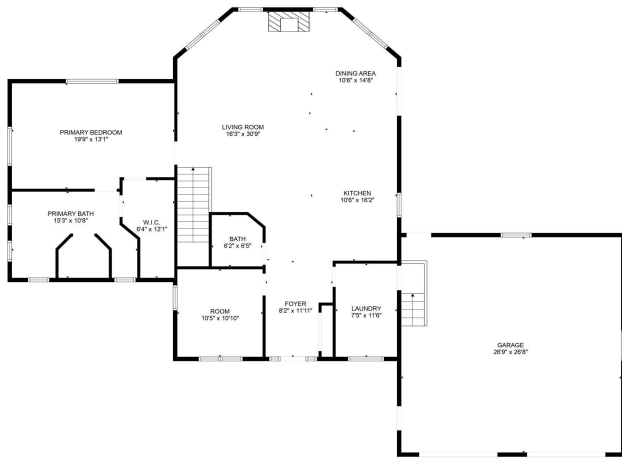
\$500,000
MLS 6718908 Residential
19273 Echo Ridge Drive
Nevis MN 56467



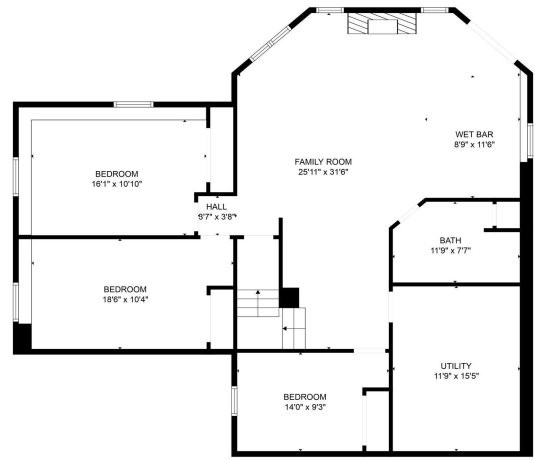
website: www.AffinityRealEstate.com | email: info@affinityrealestate.com | office: 218-237-3333 | fax: 218-237-3377

Affinity
REAL ESTATE INC

\$500,000
MLS 6718908 Residential
19273 Echo Ridge Drive
Nevis MN 56467



FLOOR PLAN CREATED BY CUBICASA APP. MEASUREMENTS DEEMED HIGHLY RELIABLE BUT NOT GUARANTEED.



FLOOR PLAN CREATED BY CUBICASA APP. MEASUREMENTS DEEMED HIGHLY RELIABLE BUT NOT GUARANTEED.



website: www.AffinityRealEstate.com | email: info@affinityrealestate.com | office: 218-237-3333 | fax: 218-237-3377

Affinity
REAL ESTATE INC

\$500,000
MLS 6718908 Residential
19273 Echo Ridge Drive
Nevis MN 56467



website: www.AffinityRealEstate.com | email: info@affinityrealestate.com | office: 218-237-3333 | fax: 218-237-3377



\$500,000
MLS 6718908 Residential
19273 Echo Ridge Drive
Nevis MN 56467