



MLS 6718978 Lake Home

\$799,900

2,428 sq ft
3 bedrooms
3 baths

3821 Wolf Lane
Bemidji MN 56601

Waterfront: Wolf Lake (Frohn Twp.)

Status: Pending

Description:

Have you ever wanted to live on a sought after lake but didn't want to be looking in your neighbors space? Well this property is the perfect solution! Welcome to your private retreat in Walleye Estates on Wolf Lake—a stunning, custom-built home by renowned Wagner Builders. This exquisite 3-bedroom, 3-bathroom residence offers the perfect blend of comfort, craftsmanship, and Northwoods charm on a peaceful 5-acre back lot surrounded by mature trees and serene privacy. Step inside to discover one-level living designed for ease and elegance, featuring vaulted ceilings, a spacious open floor plan, and in-floor heat with a hidden, ducted split system for quiet, efficient comfort. Entertain with ease in the inviting bar area, cozy up to the stone fireplace, or cook like a pro in the gourmet kitchen outfitted with premium finishes. The expansive primary suite offers a spa-like experience with a luxurious bath, while two additional bedrooms and baths provide plenty of space for family and guests. A generously sized attached double garage ensures convenience, while the insulated and heated detached shop is perfect for hobbies, storage, or year-round projects. Enjoy access to a shared beach area with a dock and boat slip in a protected harbor on beautiful Wolf Lake—ideal for fishing, boating, and making unforgettable lakeside memories. Don't miss this rare opportunity to own a high-end home in one of the area's most desirable lake communities.

Additional Details:

Year Built	2021
Lot Acres	5.08
Lot Dimensions	500x450
Garage Stalls	6
School District	31
Taxes	\$5,378
Taxes with Assessments	\$5,378
Tax Year	2025

Additional Features:

Basement: None **Fuel:** Propane **Garage:** 6 **Heat:** Boiler, Fireplace(s), Radiant Floor, Other, Radiant **Sewer:** Private Sewer, Septic System
Compliant - Yes **Water:** Private, Well **Air Conditioning:** Central Air

Driving Directions:



From Wolf Lake Dr SE, to left on Walley Ln SE, right on Wolf Ln to property on the right

Affinity Real Estate Inc. participates in the Regional Multiple Listing Service of Minnesota, Inc Broker Reciprocity (sm) program, allowing us to display other broker's listings on our website. All properties are subject to prior sale, change or withdrawal.



Call Affinity Real Estate

218-237-3333

info@affinityrealestate.com



Affinity Real Estate - 600 Park Avenue South - Park Rapids MN 56470



website: www.AffinityRealEstate.com | email: info@affinityrealestate.com | office: 218-237-3333 | fax: 218-237-3377



\$799,900
 MLS 6718978 Lake Home
 3821 Wolf Lane
 Bemidji MN 56601



website: www.AffinityRealEstate.com | email: info@affinityrealestate.com | office: 218-237-3333 | fax: 218-237-3377

Affinity
REAL ESTATE INC

\$799,900
MLS 6718978 Lake Home
3821 Wolf Lane
Bemidji MN 56601



website: www.AffinityRealEstate.com | email: info@affinityrealestate.com | office: 218-237-3333 | fax: 218-237-3377

Affinity
REAL ESTATE INC

\$799,900
MLS 6718978 Lake Home
3821 Wolf Lane
Bemidji MN 56601



website: www.AffinityRealEstate.com | email: info@affinityrealestate.com | office: 218-237-3333 | fax: 218-237-3377



\$799,900
 MLS 6718978 Lake Home
 3821 Wolf Lane
 Bemidji MN 56601



website: www.AffinityRealEstate.com | email: info@affinityrealestate.com | office: 218-237-3333 | fax: 218-237-3377



\$799,900
 MLS 6718978 Lake Home
 3821 Wolf Lane
 Bemidji MN 56601



website: www.AffinityRealEstate.com | email: info@affinityrealestate.com | office: 218-237-3333 | fax: 218-237-3377

Affinity
REAL ESTATE INC

\$799,900
MLS 6718978 Lake Home
3821 Wolf Lane
Bemidji MN 56601



website: www.AffinityRealEstate.com | email: info@affinityrealestate.com | office: 218-237-3333 | fax: 218-237-3377



\$799,900
 MLS 6718978 Lake Home
 3821 Wolf Lane
 Bemidji MN 56601



website: www.AffinityRealEstate.com | email: info@affinityrealestate.com | office: 218-237-3333 | fax: 218-237-3377



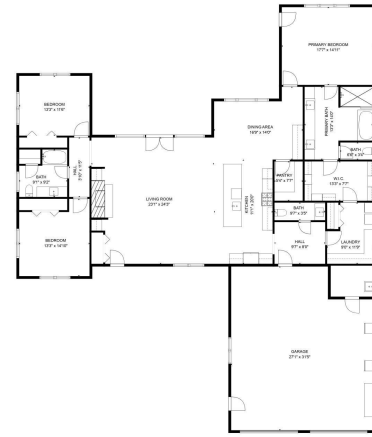
\$799,900
 MLS 6718978 Lake Home
 3821 Wolf Lane
 Bemidji MN 56601



website: www.AffinityRealEstate.com | email: info@affinityrealestate.com | office: 218-237-3333 | fax: 218-237-3377

Affinity
REAL ESTATE INC

\$799,900
MLS 6718978 Lake Home
3821 Wolf Lane
Bemidji MN 56601



TOTAL: 2397 sq. ft.
FLOOR 1: 2397 sq. ft.
EXCLUDED AREAS: GARAGE: 797 sq. ft.
FLOOR PLAN CREATED BY CUBICAG AIR MEASUREMENTS DEEMED HIGHLY RELIABLE BUT NOT GUARANTEED.

website: www.AffinityRealEstate.com | email: info@affinityrealestate.com | office: 218-237-3333 | fax: 218-237-3377



\$799,900
MLS 6718978 Lake Home
3821 Wolf Lane
Bemidji MN 56601