



MLS 6719045 Lake Home

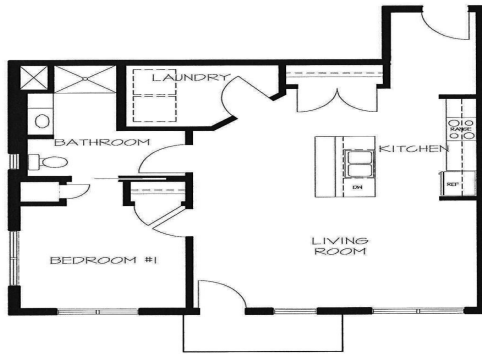
**\$261,050**

839 sq ft  
1 bedrooms  
1 baths

715 Lake Shore Drive  
Bemidji MN 56601

Waterfront: Bemidji (main lake)

Status: Active



1 BEDROOM  
#101

#### Description:

Welcome to Bemidji's premier condo development on the South Shore of Lake Bemidji! The Bixby features secure indoor parking, two elevators, triple pane windows, soundproof insulation, and private balconies. Enjoy quartz countertops and Onyx Shower systems in every unit. The association fee covers natural gas, water, sewer, and refuse. This floor plan, 'The Viking,' offers 1 bedroom, 1 bath, and 839 sf, with Unit 101 on the first floor and southern views. Choose early to customize your favorite unit!

Welcome to Bemidji's premier condo development on the South Shore of Lake Bemidji! The Bixby features secure indoor parking, two elevators, triple pane windows, soundproof insulation, and private balconies. Enjoy quartz countertops and Onyx Shower systems in every unit. The association fee covers natural gas, water, sewer, and refuse. This floor plan, 'The Viking,' offers 1 bedroom, 1 bath, and 839 sf, with Unit 101 on the first floor and southern views.

#### Additional Details:

Year Built	2021
Lot Acres	0.06
Lot Dimensions	348x228
Garage Stalls	1
School District	31
Taxes	\$3,274
Taxes with Assessments	\$3,274
Tax Year	2025

#### Additional Features:

**Basement:** None **Fuel:** Electric **Garage:** 1 **Heat:** Ductless Mini-Split, Heat Pump **Sewer:** City Sewer/Connected **Water:** City Water/Connected  
**Air Conditioning:** Ductless Mini-Split

#### Driving Directions:

Paul Bunyan Drive S., turn East on Lake Ave. Take the first left, go around the roundabout, turn right at the stop sign condos are on the left.



Listed By:  
Lake-N-Woods Realty

Affinity Real Estate Inc. participates in the Regional Multiple Listing Service of Minnesota, Inc Broker Reciprocity (sm) program, allowing us to display other broker's listings on our website. All properties are subject to prior sale, change or withdrawal.



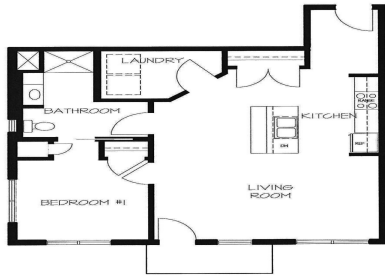
**Call Affinity Real Estate**

**218-237-3333**

**info@affinityrealestate.com**



**Affinity Real Estate - 600 Park Avenue South - Park Rapids MN 56470**



1 BEDROOM  
#101



website: [www.AffinityRealEstate.com](http://www.AffinityRealEstate.com) | email: [info@affinityrealestate.com](mailto:info@affinityrealestate.com) | office: 218-237-3333 | fax: 218-237-3377



**\$261,050**

MLS 6719045 Lake Home  
715 Lake Shore Drive  
Bemidji MN 56601