



MLS 6719053 Lake Home

\$268,985

800 sq ft
1 bedrooms
1 baths

715 Lake Shore Drive
Bemidji MN 56601

Waterfront: Bemidji (main lake)

Status: Active

Description:

Welcome to Bemidji's premier condominium development located on the South Shore of Lake Bemidji! The Bixby offers secure indoor parking, two elevators, triple-pane windows, soundproof insulation, and private balconies. Every unit features quartz countertops and Onyx shower systems. The association fee includes natural gas, water, sewer, and refuse. This floor plan, known as "The Babe," is situated at either end of the building, providing both lake views and south-facing views. Unit 109, a 1-bedroom, 1-bathroom unit with 800 square feet of space, is located on the east end of the first floor.

Additional Details:

Year Built	2022
Lot Acres	0.06
Lot Dimensions	348x228
Garage Stalls	1
School District	31
Taxes	\$3,458
Taxes with Assessments	\$3,458
Tax Year	2025

Additional Features:

Basement: None **Fuel:** Electric **Garage:** 1 **Heat:** Ductless Mini-Split, Heat Pump **Sewer:** City Sewer/Connected **Water:** City Water/Connected
Air Conditioning: Ductless Mini-Split

Driving Directions:

Paul Bunyan Drive S., turn East on Lake Ave. Take the first left, go around the roundabout, turn right at the stop sign condos are on the left.



Listed By:
Lake-N-Woods Realty

Affinity Real Estate Inc. participates in the Regional Multiple Listing Service of Minnesota, Inc Broker Reciprocity (sm) program, allowing us to display other broker's listings on our website. All properties are subject to prior sale, change or withdrawal.



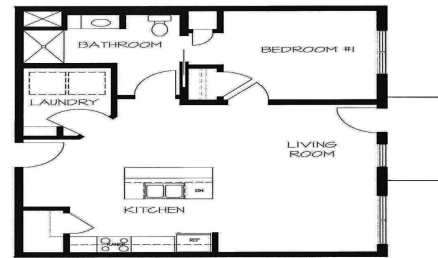
Call Affinity Real Estate

218-237-3333

info@affinityrealestate.com



Affinity Real Estate - 600 Park Avenue South - Park Rapids MN 56470



1 BEDROOM
#109



website: www.AffinityRealEstate.com | email: info@affinityrealestate.com | office: 218-237-3333 | fax: 218-237-3377



\$268,985

MLS 6719053 Lake Home
715 Lake Shore Drive
Bemidji MN 56601



website: www.AffinityRealEstate.com | email: info@affinityrealestate.com | office: 218-237-3333 | fax: 218-237-3377



\$268,985

MLS 6719053 Lake Home
715 Lake Shore Drive
Bemidji MN 56601