



MLS 6719130 Lake Home

**\$479,000**

1,472 sq ft  
3 bedrooms  
2 baths

25433 County 86  
Nevis MN 56467

Waterfront: West Crooked

Status: Active

#### Description:

Discover your dream retreat! This charming three-bedroom, two-bath home is nestled on the serene shores of West Crooked Lake, surrounded by over 15 acres of majestic mature hardwoods. The inviting interior boasts a cozy wood-burning stove, perfect for those chilly evenings. Outside, you'll find a spacious two-car detached garage and a generous 30 x 40 shop, ideal for hobbies or storage. Embrace the beauty of nature while enjoying all the comforts of home!

#### Additional Details:

Year Built	1956
Lot Acres	15.74
Lot Dimensions	Irregular
Garage Stalls	4
School District	308
Taxes	\$2,039
Taxes with Assessments	\$2,260
Tax Year	2025

#### Additional Features:

**Basement:** Block **Fuel:** Propane, Wood **Garage:** 4 **Heat:** Forced Air, Wood Stove **Sewer:** Tank with Drainage Field **Water:** Well **Air Conditioning:** Central Air

#### Driving Directions:

From 34/71 in Park Rapids, East on 34 to Nevis. Left on County 2 (Bunyan Trails Drive). Follow to County 86 to property.



Listed By:  
Wolff & Simon Real Estate

Affinity Real Estate Inc. participates in the Regional Multiple Listing Service of Minnesota, Inc Broker Reciprocity (sm) program, allowing us to display other broker's listings on our website. All properties are subject to prior sale, change or withdrawal.



Call Affinity Real Estate

**218-237-3333**

[info@affinityrealestate.com](mailto:info@affinityrealestate.com)



Affinity Real Estate - 600 Park Avenue South - Park Rapids MN 56470





website: [www.AffinityRealEstate.com](http://www.AffinityRealEstate.com) | email: [info@affinityrealestate.com](mailto:info@affinityrealestate.com) | office: 218-237-3333 | fax: 218-237-3377

**Affinity**  
REAL ESTATE INC

**\$479,000**  
MLS 6719130 Lake Home  
25433 County 86  
Nevis MN 56467





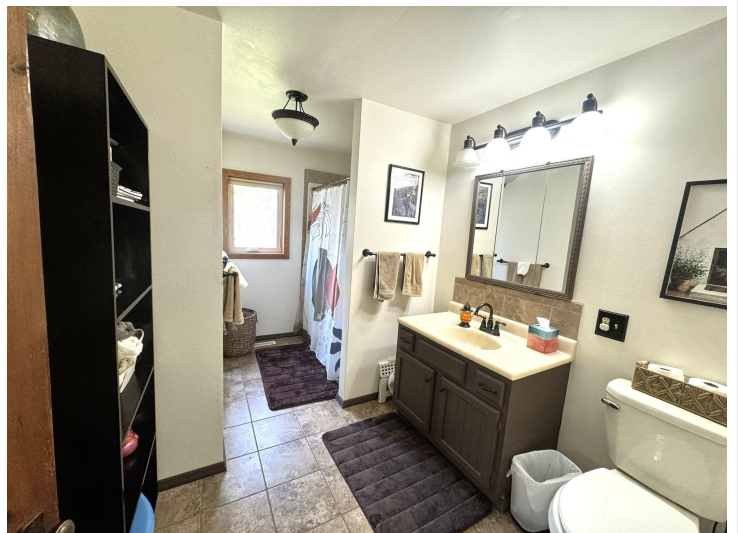
website: [www.AffinityRealEstate.com](http://www.AffinityRealEstate.com) | email: [info@affinityrealestate.com](mailto:info@affinityrealestate.com) | office: 218-237-3333 | fax: 218-237-3377

**Affinity**  
REAL ESTATE INC

**\$479,000**

MLS 6719130 Lake Home  
25433 County 86  
Nevis MN 56467





website: [www.AffinityRealEstate.com](http://www.AffinityRealEstate.com) | email: [info@affinityrealestate.com](mailto:info@affinityrealestate.com) | office: 218-237-3333 | fax: 218-237-3377

**Affinity**  
REAL ESTATE INC

**\$479,000**  
MLS 6719130 Lake Home  
25433 County 86  
Nevis MN 56467



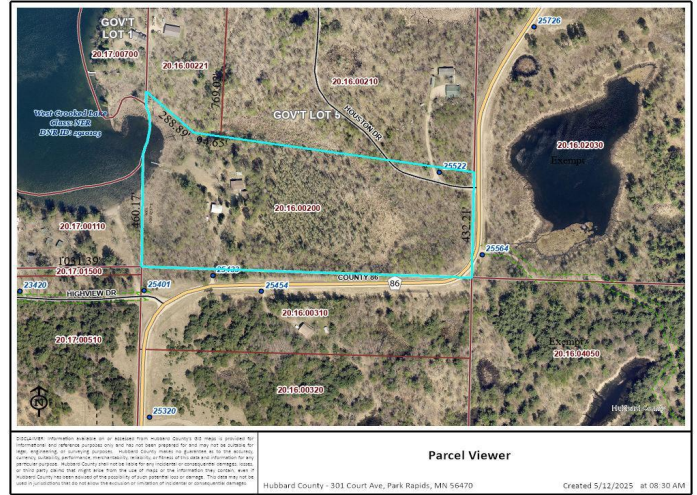


website: [www.AffinityRealEstate.com](http://www.AffinityRealEstate.com) | email: [info@affinityrealestate.com](mailto:info@affinityrealestate.com) | office: 218-237-3333 | fax: 218-237-3377

**Affinity**  
REAL ESTATE INC

**\$479,000**  
MLS 6719130 Lake Home  
25433 County 86  
Nevis MN 56467





website: [www.AffinityRealEstate.com](http://www.AffinityRealEstate.com) | email: [info@affinityrealestate.com](mailto:info@affinityrealestate.com) | office: 218-237-3333 | fax: 218-237-3377



**\$479,000**  
 MLS 6719130 Lake Home  
 25433 County 86  
 Nevis MN 56467



website: [www.AffinityRealEstate.com](http://www.AffinityRealEstate.com) | email: [info@affinityrealestate.com](mailto:info@affinityrealestate.com) | office: 218-237-3333 | fax:218-237-3377



**\$479,000**

MLS 6719130 Lake Home  
25433 County 86  
Nevis MN 56467



website: [www.AffinityRealEstate.com](http://www.AffinityRealEstate.com) | email: [info@affinityrealestate.com](mailto:info@affinityrealestate.com) | office: 218-237-3333 | fax:218-237-3377



**\$479,000**

MLS 6719130 Lake Home  
25433 County 86  
Nevis MN 56467