



MLS 6719173 Residential

**\$259,900**

1,784 sq ft  
3 bedrooms  
2 baths

7645 White Overlook Drive  
Pequot Lakes MN 56472

Status: Active

**Description:**

Affordable split level home on a beautiful, private lot. 3 beds 2 baths, bright home with vaulted ceilings. Oversized deck and lots of wildlife with vacant lots on both sides of the property. Vinyl siding, newer roof, newer water heater, firepit, storage shed, and additional space next to the garage to park your boat!

This home is a great way to stop paying rent and invest in your own property and put some work into it for equity!

**Additional Details:**

Year Built	2003
Lot Acres	0.52
Lot Dimensions	102x222
Garage Stalls	2
School District	186
Taxes	\$1,750
Taxes with Assessments	\$1,750
Tax Year	2024

**Additional Features:**

**Fuel:** Natural Gas **Heat:** Forced Air

**Driving Directions:**

Head west on Co Rd 11 to right onto Ranchette Drive to right onto Winter Trail to left onto Hillside Pass to right onto White Overlook Drive to property on the right.



Listed By:  
Northland Sotheby's International Realty

Affinity Real Estate Inc. participates in the Regional Multiple Listing Service of Minnesota, Inc Broker Reciprocity (sm) program, allowing us to display other broker's listings on our website. All properties are subject to prior sale, change or withdrawal.



**Call Affinity Real Estate**

**218-237-3333**

**info@affinityrealestate.com**



**Affinity Real Estate - 600 Park Avenue South - Park Rapids MN 56470**



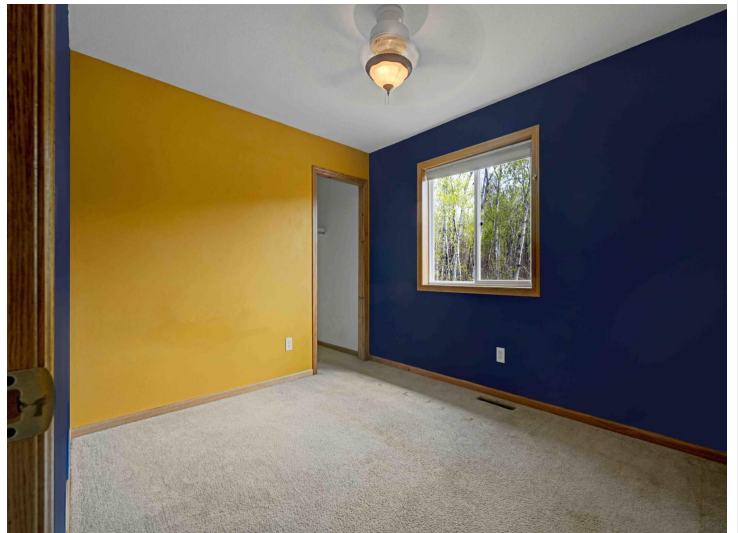


website: [www.AffinityRealEstate.com](http://www.AffinityRealEstate.com) | email: [info@affinityrealestate.com](mailto:info@affinityrealestate.com) | office: 218-237-3333 | fax: 218-237-3377



**\$259,900**  
 MLS 6719173 Residential  
 7645 White Overlook Drive  
 Pequot Lakes MN 56472



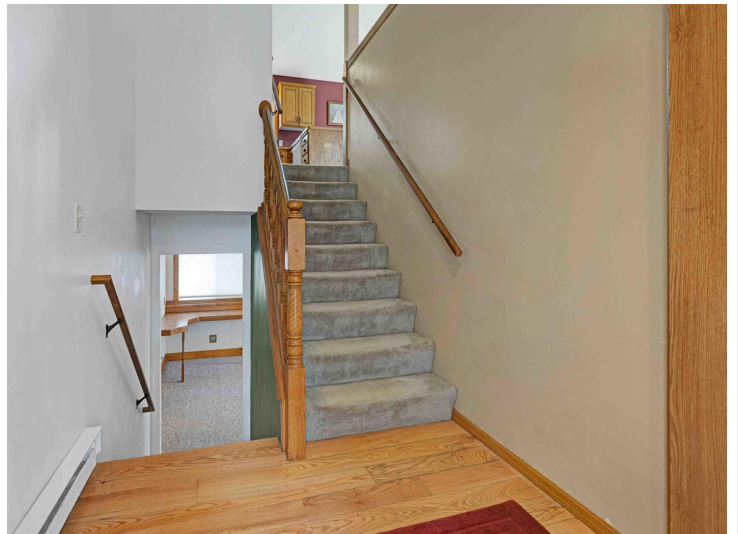


website: [www.AffinityRealEstate.com](http://www.AffinityRealEstate.com) | email: [info@affinityrealestate.com](mailto:info@affinityrealestate.com) | office: 218-237-3333 | fax: 218-237-3377



**\$259,900**  
 MLS 6719173 Residential  
 7645 White Overlook Drive  
 Pequot Lakes MN 56472



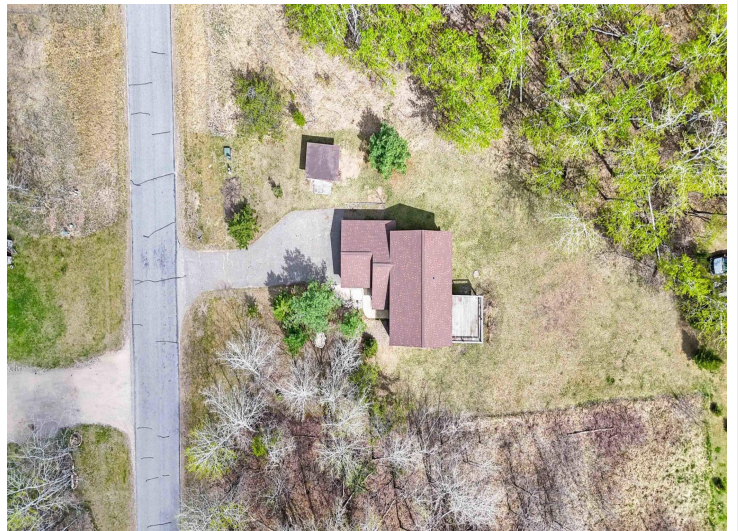
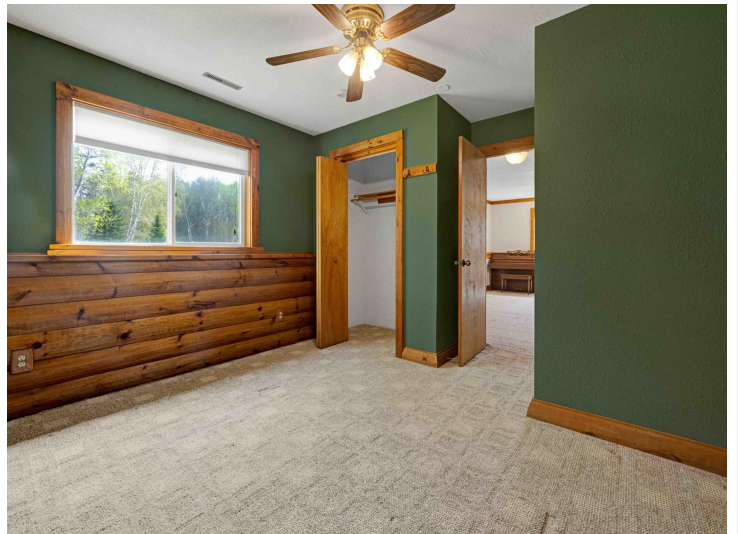
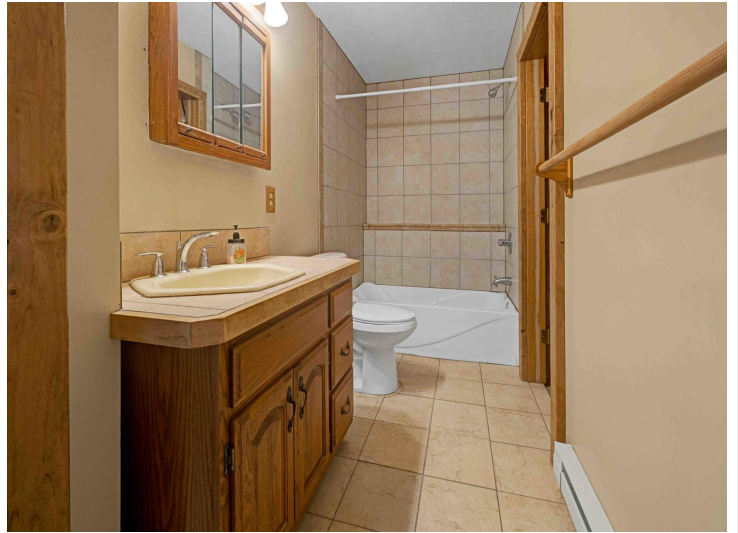


website: [www.AffinityRealEstate.com](http://www.AffinityRealEstate.com) | email: [info@affinityrealestate.com](mailto:info@affinityrealestate.com) | office: 218-237-3333 | fax: 218-237-3377

**Affinity**  
REAL ESTATE INC

**\$259,900**  
MLS 6719173 Residential  
7645 White Overlook Drive  
Pequot Lakes MN 56472





website: [www.AffinityRealEstate.com](http://www.AffinityRealEstate.com) | email: [info@affinityrealestate.com](mailto:info@affinityrealestate.com) | office: 218-237-3333 | fax: 218-237-3377

**Affinity**  
REAL ESTATE INC

**\$259,900**  
MLS 6719173 Residential  
7645 White Overlook Drive  
Pequot Lakes MN 56472





website: [www.AffinityRealEstate.com](http://www.AffinityRealEstate.com) | email: [info@affinityrealestate.com](mailto:info@affinityrealestate.com) | office: 218-237-3333 | fax:218-237-3377



**\$259,900**

MLS 6719173 Residential  
7645 White Overlook Drive  
Pequot Lakes MN 56472