



MLS 6719230 Lake Home

\$2,799,900

5,448 sq ft
8 bedrooms
6 baths

26746 County Road 4
Nisswa MN 56468

Waterfront: Pelican

Status: Active

Description:

Legacy property with Perfect 176' of level Sand Beach on Pelican Lake in Nisswa, MN. Beautiful 4,000Sqft Custom home with 5 bedrooms, 4 bathrooms, woodburning stone fireplace, 28' cathedral ceilings, beautiful kitchen with granite counters, custom millwork throughout, Screen porch, and a Lower-level walkout basement. The 1800sqft year-round 3-bedroom 2 bath guest house has been recently remodeled with custom floors, doors and Trim! The property has multiple other out building but the lakeside lodge and cottages are the real charmers. The oversized 3.3-acre lot opens up many possibilities including a large private estate or corporate retreat. Located just minutes to Downtown Nisswa and Breezy Point!

Additional Details:

Year Built	2009
Lot Acres	3.3
Lot Dimensions	167x884x164x884
Garage Stalls	5
School District	186
Taxes	\$5,336
Taxes with Assessments	\$5,336
Tax Year	2024

Additional Features:

Basement: Block, Finished, Full **Fuel:** Electric, Natural Gas **Garage:** 5 **Heat:** Boiler, Forced Air, Fireplace(s) **Sewer:** Tank with Drainage Field
Water: Submersible - 4 Inch **Air Conditioning:** Central Air

Driving Directions:

East of Nisswa on County Rd 18 to north on County Rd 4 to property on right.



Listed By:
RE/MAX Results - Nisswa

Affinity Real Estate Inc. participates in the Regional Multiple Listing Service of Minnesota, Inc Broker Reciprocity (sm) program, allowing us to display other broker's listings on our website. All properties are subject to prior sale, change or withdrawal.



Call Affinity Real Estate

218-237-3333

info@affinityrealestate.com



Affinity Real Estate - 600 Park Avenue South - Park Rapids MN 56470



website: www.AffinityRealEstate.com | email: info@affinityrealestate.com | office: 218-237-3333 | fax: 218-237-3377



\$2,799,900
 MLS 6719230 Lake Home
 26746 County Road 4
 Nisswa MN 56468

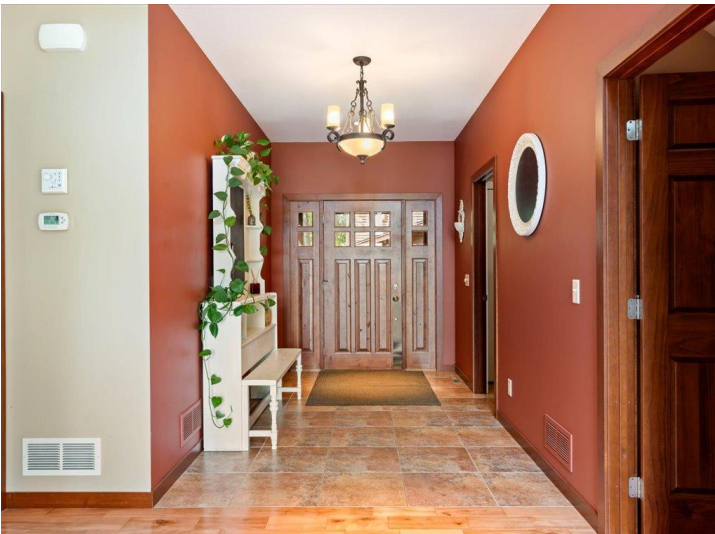
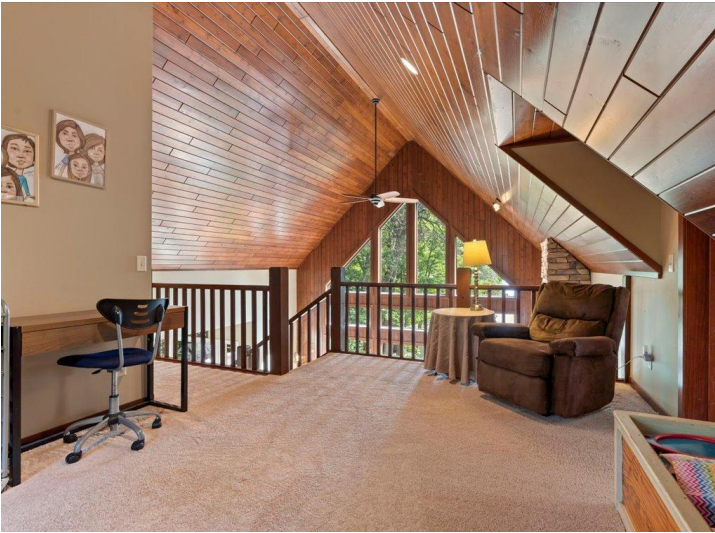


website: www.AffinityRealEstate.com | email: info@affinityrealestate.com | office: 218-237-3333 | fax: 218-237-3377

Affinity
REAL ESTATE INC

\$2,799,900

MLS 6719230 Lake Home
26746 County Road 4
Nisswa MN 56468



website: www.AffinityRealEstate.com | email: info@affinityrealestate.com | office: 218-237-3333 | fax: 218-237-3377

Affinity
REAL ESTATE INC

\$2,799,900

MLS 6719230 Lake Home
26746 County Road 4
Nisswa MN 56468



website: www.AffinityRealEstate.com | email: info@affinityrealestate.com | office: 218-237-3333 | fax: 218-237-3377

Affinity
REAL ESTATE INC

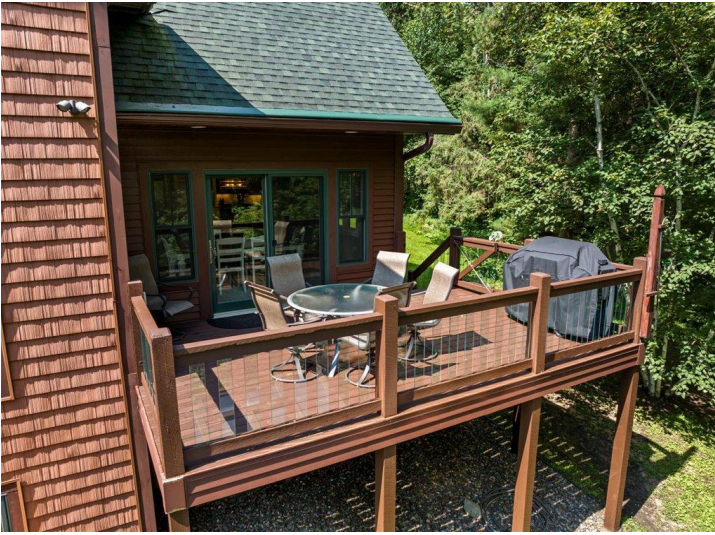
\$2,799,900
MLS 6719230 Lake Home
26746 County Road 4
Nisswa MN 56468



website: www.AffinityRealEstate.com | email: info@affinityrealestate.com | office: 218-237-3333 | fax: 218-237-3377

Affinity
REAL ESTATE INC

\$2,799,900
MLS 6719230 Lake Home
26746 County Road 4
Nisswa MN 56468



website: www.AffinityRealEstate.com | email: info@affinityrealestate.com | office: 218-237-3333 | fax: 218-237-3377

Affinity
REAL ESTATE INC

\$2,799,900

MLS 6719230 Lake Home
26746 County Road 4
Nisswa MN 56468



website: www.AffinityRealEstate.com | email: info@affinityrealestate.com | office: 218-237-3333 | fax: 218-237-3377



\$2,799,900

MLS 6719230 Lake Home
26746 County Road 4
Nisswa MN 56468



website: www.AffinityRealEstate.com | email: info@affinityrealestate.com | office: 218-237-3333 | fax: 218-237-3377



\$2,799,900

MLS 6719230 Lake Home
26746 County Road 4
Nisswa MN 56468



website: www.AffinityRealEstate.com | email: info@affinityrealestate.com | office: 218-237-3333 | fax: 218-237-3377



\$2,799,900

MLS 6719230 Lake Home
26746 County Road 4
Nisswa MN 56468