



MLS 6719353 Residential

\$473,000

3,008 sq ft
6 bedrooms
3 baths

402 Norway Court
Staples MN 56479

Status: Active

Description:

You do NOT want to miss this stunning 3,000+ sq ft new construction home, offering 6 spacious bedrooms and 3 full bathrooms! Step inside and head up to the main living area, where a grand vaulted ceiling spans the kitchen, dining, and living room. The kitchen features custom cabinets, granite countertops, and a walk-in pantry—creating a luxurious first impression from the front door. Natural light fills the dining area through a patio door and extra window, flowing into a cozy, carpeted living room. The main floor also includes a comfortable primary suite, two additional bedrooms, and a full bath. Downstairs, the large family room offers endless possibilities—playroom, media room, craft space, or home gym. The lower level also includes three more bedrooms, a full bathroom, laundry area, and a spacious storage room that makes the square footage feel endless. An insulated attached garage, asphalt driveway, and peaceful cul-de-sac location complete this move-in ready home—offered at a price that could give you instant equity! Seller is offering \$10,000 seller contributions to buyer's closing costs.

Additional Details:

Year Built	2025
Lot Acres	0.48
Lot Dimensions	100x202x101x217
Garage Stalls	2
School District	2170
Taxes	(unreported)
Taxes with Assessments	(unreported)
Tax Year	2025

Additional Features:

Fuel: Propane **Heat:** Forced Air

Driving Directions:

From Highway 10 in Staples, go N on County Road 30. After the airport take a right on Spruce Drive, after a 1/4 mile, turn left to stay on Spruce Drive. The property is on the left, on the corner of Spruce Drive and Norway Court.



Listed By:
Keller Williams Realty Professionals

Affinity Real Estate Inc. participates in the Regional Multiple Listing Service of Minnesota, Inc Broker Reciprocity (sm) program, allowing us to display other broker's listings on our website. All properties are subject to prior sale, change or withdrawal.



Call Affinity Real Estate

218-237-3333

info@affinityrealestate.com



Affinity Real Estate - 600 Park Avenue South - Park Rapids MN 56470



website: www.AffinityRealEstate.com | email: info@affinityrealestate.com | office: 218-237-3333 | fax: 218-237-3377



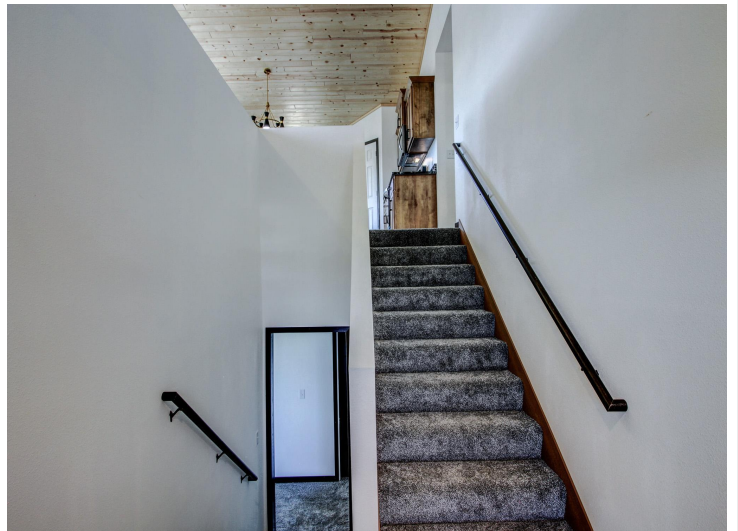
\$473,000
 MLS 6719353 Residential
 402 Norway Court
 Staples MN 56479



website: www.AffinityRealEstate.com | email: info@affinityrealestate.com | office: 218-237-3333 | fax: 218-237-3377



\$473,000
 MLS 6719353 Residential
 402 Norway Court
 Staples MN 56479



website: www.AffinityRealEstate.com | email: info@affinityrealestate.com | office: 218-237-3333 | fax: 218-237-3377



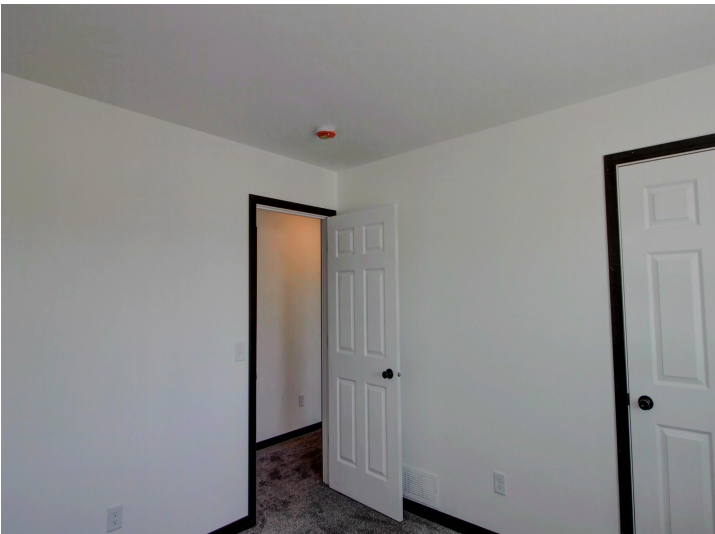
\$473,000
MLS 6719353 Residential
402 Norway Court
Staples MN 56479



website: www.AffinityRealEstate.com | email: info@affinityrealestate.com | office: 218-237-3333 | fax: 218-237-3377



\$473,000
 MLS 6719353 Residential
 402 Norway Court
 Staples MN 56479



website: www.AffinityRealEstate.com | email: info@affinityrealestate.com | office: 218-237-3333 | fax: 218-237-3377



\$473,000
MLS 6719353 Residential
402 Norway Court
Staples MN 56479



website: www.AffinityRealEstate.com | email: info@affinityrealestate.com | office: 218-237-3333 | fax: 218-237-3377



\$473,000
 MLS 6719353 Residential
 402 Norway Court
 Staples MN 56479



website: www.AffinityRealEstate.com | email: info@affinityrealestate.com | office: 218-237-3333 | fax:218-237-3377



\$473,000
MLS 6719353 Residential
402 Norway Court
Staples MN 56479