



MLS 6719369 Residential

\$315,000

1,957 sq ft
3 bedrooms
2 baths

7525 Filbert Lane
Bemidji MN 56601

Status: Active

Description:

Looking for that great place to live? Here it is: With the golf course, state park, lakes and walking trails close by, this home sits on a nice, large, & wooded lot. Features a main floor bedroom and bath, nice kitchen layout with dining area, fireplace and sitting area for a cozy evening. Great living room with open stairway to an upstairs loft area off two bedrooms and bath. Basement has a finished family room and lots of space to expand. Back entry mud room that you can have your washer and dryer in, single attached garage and double detached garage, come take a look at the possibilities!

Additional Details:

Year Built	1983
Lot Acres	1.88
Lot Dimensions	200x200x293x365
Garage Stalls	3
School District	31
Taxes	\$2,446
Taxes with Assessments	\$2,446
Tax Year	2023

Additional Features:

Basement: Egress Window(s), Partially Finished **Fuel:** Propane **Garage:** 3 **Heat:** Dual, Fireplace(s) **Sewer:** Septic System Compliant - Yes
Water: Well **Air Conditioning:** None

Driving Directions:

North on Bemidji Ave, right on Birchmont Beach Rd Cty 20 , approx 3 miles, left on Filbert Ln 2nd house on the left



Listed By:
Grimes Realty

Affinity Real Estate Inc. participates in the Regional Multiple Listing Service of Minnesota, Inc Broker Reciprocity (sm) program, allowing us to display other broker's listings on our website. All properties are subject to prior sale, change or withdrawal.



Call Affinity Real Estate

218-237-3333

info@affinityrealestate.com



Affinity Real Estate - 600 Park Avenue South - Park Rapids MN 56470



website: www.AffinityRealEstate.com | email: info@affinityrealestate.com | office: 218-237-3333 | fax: 218-237-3377

Affinity
REAL ESTATE INC

\$315,000
MLS 6719369 Residential
7525 Filbert Lane
Bemidji MN 56601



website: www.AffinityRealEstate.com | email: info@affinityrealestate.com | office: 218-237-3333 | fax: 218-237-3377

Affinity
REAL ESTATE INC

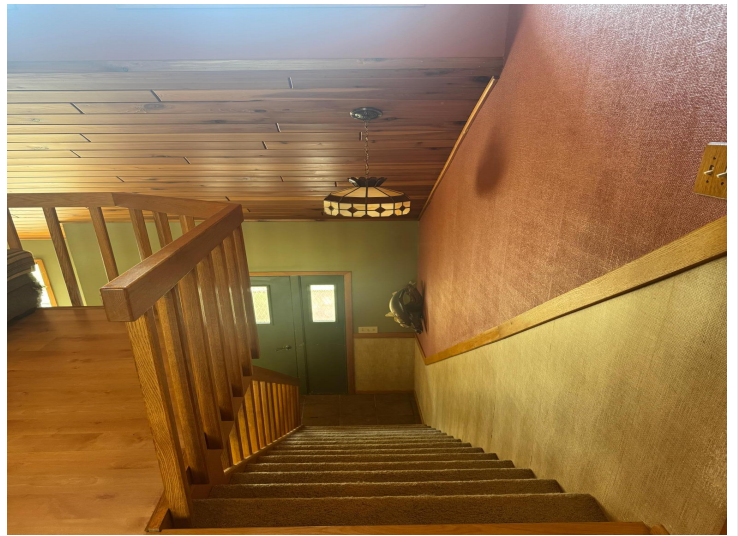
\$315,000
MLS 6719369 Residential
7525 Filbert Lane
Bemidji MN 56601



website: www.AffinityRealEstate.com | email: info@affinityrealestate.com | office: 218-237-3333 | fax: 218-237-3377

Affinity
REAL ESTATE INC

\$315,000
MLS 6719369 Residential
7525 Filbert Lane
Bemidji MN 56601



website: www.AffinityRealEstate.com | email: info@affinityrealestate.com | office: 218-237-3333 | fax: 218-237-3377

Affinity
REAL ESTATE INC

\$315,000
MLS 6719369 Residential
7525 Filbert Lane
Bemidji MN 56601



website: www.AffinityRealEstate.com | email: info@affinityrealestate.com | office: 218-237-3333 | fax: 218-237-3377

Affinity
REAL ESTATE INC

\$315,000
MLS 6719369 Residential
7525 Filbert Lane
Bemidji MN 56601



website: www.AffinityRealEstate.com | email: info@affinityrealestate.com | office: 218-237-3333 | fax: 218-237-3377



\$315,000
 MLS 6719369 Residential
 7525 Filbert Lane
 Bemidji MN 56601



website: www.AffinityRealEstate.com | email: info@affinityrealestate.com | office: 218-237-3333 | fax: 218-237-3377



\$315,000
 MLS 6719369 Residential
 7525 Filbert Lane
 Bemidji MN 56601