



MLS 6719551 Residential

**\$185,250**

1,620 sq ft  
2 bedrooms  
2 baths

305 Jefferson Avenue  
Pine River MN 56474

Status: Active

**Description:**

Jefferson Avenue - Wanneson Estates is the ideal retirement package for you in this 55+ community. This 2 BR/ 2BA remodeled townhome features updated flooring, cabinets, center island a full basement (partially finished), an attached 1.5 car garage, efficient hot water baseboard heat and all the amenities of in-town living with easy walking distance to shopping, dining and waterfront activities.

**Additional Details:**

Year Built	1981
Lot Dimensions	30x60
Garage Stalls	1
School District	2174
Taxes	\$1,704
Taxes with Assessments	\$1,770
Tax Year	2025

**Additional Features:**

**Basement:** Block, Full, Partially Finished **Fuel:** Electric, Natural Gas **Garage:** 1 **Heat:** Baseboard, Hot Water **Sewer:** City Sewer/Connected  
**Water:** City Water/Connected **Air Conditioning:** Wall Unit(s)

**Driving Directions:**

IN PINE RIVER 2 BLOCKS NORTH OF THE STOPLIGHTS ON 371 TO RIGHT ON JEFFERSON THEN 2 BLOCKS TO #305.



Listed By:  
Heartland Real Estate

Affinity Real Estate Inc. participates in the Regional Multiple Listing Service of Minnesota, Inc Broker Reciprocity (sm) program, allowing us to display other broker's listings on our website. All properties are subject to prior sale, change or withdrawal.



**Call Affinity Real Estate**

**218-237-3333**

**info@affinityrealestate.com**



**Affinity Real Estate - 600 Park Avenue South - Park Rapids MN 56470**



website: [www.AffinityRealEstate.com](http://www.AffinityRealEstate.com) | email: [info@affinityrealestate.com](mailto:info@affinityrealestate.com) | office: 218-237-3333 | fax: 218-237-3377

**Affinity**  
REAL ESTATE INC

**\$185,250**  
MLS 6719551 Residential  
305 Jefferson Avenue  
Pine River MN 56474



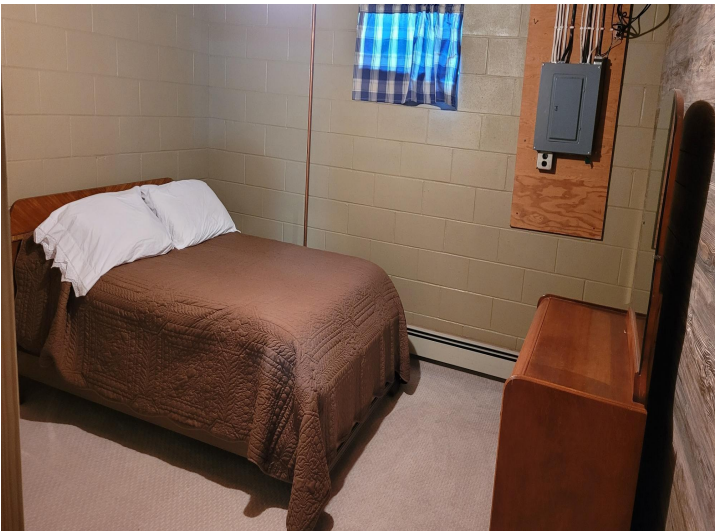
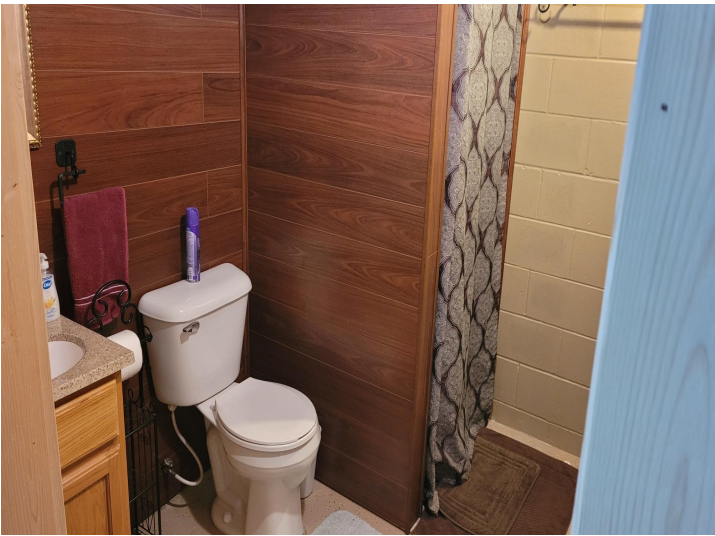


website: [www.AffinityRealEstate.com](http://www.AffinityRealEstate.com) | email: [info@affinityrealestate.com](mailto:info@affinityrealestate.com) | office: 218-237-3333 | fax: 218-237-3377

**Affinity**  
REAL ESTATE INC

**\$185,250**  
MLS 6719551 Residential  
305 Jefferson Avenue  
Pine River MN 56474





website: [www.AffinityRealEstate.com](http://www.AffinityRealEstate.com) | email: [info@affinityrealestate.com](mailto:info@affinityrealestate.com) | office: 218-237-3333 | fax: 218-237-3377

**Affinity**  
REAL ESTATE INC

**\$185,250**  
MLS 6719551 Residential  
305 Jefferson Avenue  
Pine River MN 56474



website: [www.AffinityRealEstate.com](http://www.AffinityRealEstate.com) | email: [info@affinityrealestate.com](mailto:info@affinityrealestate.com) | office: 218-237-3333 | fax:218-237-3377



**\$185,250**  
MLS 6719551 Residential  
305 Jefferson Avenue  
Pine River MN 56474