



MLS 6719647 Lake Home

\$272,780

839 sq ft
1 bedrooms
1 baths

715 Lake Shore Drive
Bemidji MN 56601

Waterfront: Bemidji (main lake)

Status: Active

Description:

Welcome to Bemidji's premier condominium development on the South Shore of Lake Bemidji! The Bixby offers secure indoor parking, two elevators, triple-pane windows, soundproof insulation, and private balconies. Each unit features quartz countertops and Onyx shower systems. Various appliance, kitchen, and trim packages are available. The association fee covers natural gas, water, sewer, and refuse.

This particular floor plan, 'The Viking,' includes 1 bedroom and 1 bathroom, with a size of 839 square feet. Unit 208 is located on the second floor, boasting south-facing views that provide ample natural light.

Additional Details:

Year Built	2021
Lot Acres	0.06
Lot Dimensions	348x228
Garage Stalls	1
School District	31
Taxes	\$3,340
Taxes with Assessments	\$3,340
Tax Year	2025

Additional Features:

Basement: None **Fuel:** Electric **Garage:** 1 **Heat:** Ductless Mini-Split, Heat Pump **Sewer:** City Sewer/Connected **Water:** City Water/Connected
Air Conditioning: Ductless Mini-Split

Driving Directions:

Paul Bunyan Drive S., turn East on Lake Ave. Take the first left, go around the roundabout, turn right at the stop sign condos are on the left.



Listed By:
Lake-N-Woods Realty

Affinity Real Estate Inc. participates in the Regional Multiple Listing Service of Minnesota, Inc Broker Reciprocity (sm) program, allowing us to display other broker's listings on our website. All properties are subject to prior sale, change or withdrawal.



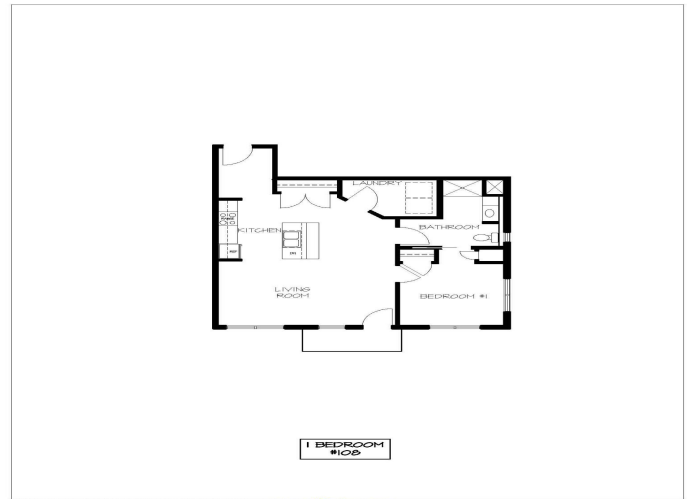
Call Affinity Real Estate

218-237-3333

info@affinityrealestate.com



Affinity Real Estate - 600 Park Avenue South - Park Rapids MN 56470



PDF created with pdfFactory trial version www.pdffactory.com



website: www.AffinityRealEstate.com | email: info@affinityrealestate.com | office: 218-237-3333 | fax: 218-237-3377



\$272,780

MLS 6719647 Lake Home
715 Lake Shore Drive
Bemidji MN 56601