



MLS 6719650 Lake Home

**\$1,225,000**

2,654 sq ft  
3 bedrooms  
2 baths

42310 County Highway 1  
Ottertail MN 56571

Waterfront: Otter Tail

Status: Pending

#### Description:

Here is your chance to own a piece of paradise. This immaculate south-facing lake home is situated perfectly on 88 ft of shore line on beautiful Otter Tail lake. Upon entrance to the home you will find stunning features throughout. The kitchen is newly updated with high end appliances, a huge island with quartz countertops, soft close maple cabinets and a huge pantry. The kitchen and living room have high ceilings with sophisticated beams and all new luxury vinyl flooring. The living room has a stunning custom-made stone fireplace, large windows and walks out to the deck. The dining area features a huge bay window that looks out over the deck to gorgeous lake views. Upstairs you will find the primary bedroom, complete with stunning ceiling beams along with a beautiful bathroom with stone tile throughout and a den with a large closet, office area and the laundry area. The lower level rec room is another amazing space to relax and enjoy lake life. This room includes a wet bar, a full size refrigerator and plenty of cabinets for storage. The lakeside deck spans the length of the home offering the perfect gathering place for family and friends. The landscaping throughout the property is perfectly maintained with concrete driveways and paths. The additional 30'x40' garage offers space for extra vehicles or storage. It also contains a bunk house that is a cozy spot for extra guests. Dock and lifts will stay with the property with an acceptable offer. You truly cannot find another home like this, the details have been thoughtfully updated highlighting the gorgeous features of the property. That along with the large flat yard leading to a beautiful wide beach and the sandy bottom lake offers access to all that Otter Tail Lake has to offer - fishing, boating, water sports, gorgeous views. Book your showing today and imagine the memories that will be made.

#### Additional Details:

Year Built	1968
Lot Acres	1.03
Lot Dimensions	213 x 93 x 200 x 88 and 280 x 90 x 284 x 90
Garage Stalls	3
School District	549
Taxes	\$5,660
Taxes with Assessments	\$5,660
Tax Year	2025

#### Additional Features:

Finished, Walkout, Fuel: Natural Gas, Garage, Hardwood Floors, Kitchen Island, Quartz Countertops, Soft Close Maple Cabinets, Huge Pantry, High Ceilings, Sophisticated Beams, All New Luxury Vinyl Flooring, Custom-Made Stone Fireplace, Large Windows, Walks Out to the Deck, Huge Bay Window, Stunning Ceiling Beams, Beautiful Bathroom with Stone Tile Throughout, Den with Large Closet, Office Area, Laundry Area, Lower Level Rec Room, Wet Bar, Full Size Refrigerator, Plenty of Cabinets for Storage, Lakeside Deck, Concrete Driveways and Paths, 30'x40' Garage, Bunk House, Dock and Lifts, Sandy Bottom Lake, Fishing, Boating, Water Sports, Gorgeous Views.

Affinity Real Estate Inc. participates in the Regional Multiple Listing Service of Minnesota, Inc Broker Reciprocity (sm) program, allowing us to display other broker's listings on our website. All properties are subject to prior sale, change or withdrawal.

#### Driving Directions:

From Hwy 78, left on County Hwy 1, go 1.5 miles and turn left.



**Call Affinity Real Estate**

**218-237-3333**  
**info@affinityrealestate.com**



**Affinity Real Estate - 600 Park Avenue South - Park Rapids MN 56470**





website: [www.AffinityRealEstate.com](http://www.AffinityRealEstate.com) | email: [info@affinityrealestate.com](mailto:info@affinityrealestate.com) | office: 218-237-3333 | fax: 218-237-3377

**Affinity**  
REAL ESTATE INC

**\$1,225,000**  
MLS 6719650 Lake Home  
42310 County Highway 1  
Ottertail MN 56571



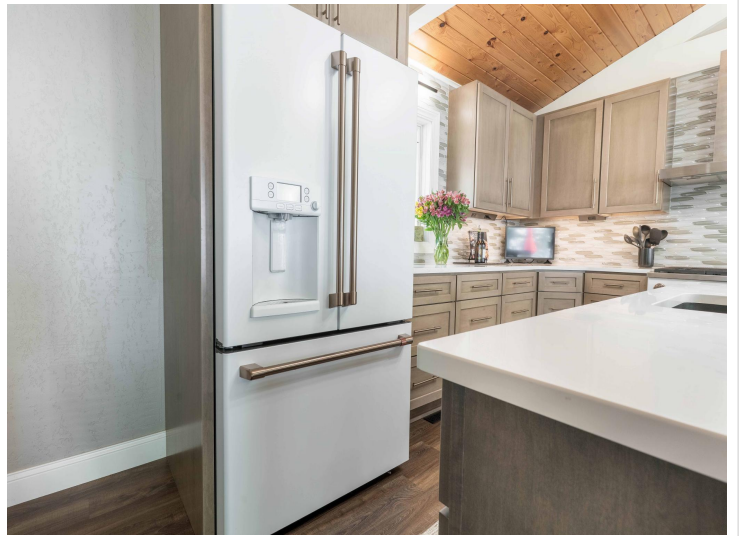


website: [www.AffinityRealEstate.com](http://www.AffinityRealEstate.com) | email: [info@affinityrealestate.com](mailto:info@affinityrealestate.com) | office: 218-237-3333 | fax: 218-237-3377



**\$1,225,000**  
 MLS 6719650 Lake Home  
 42310 County Highway 1  
 Ottertail MN 56571





website: [www.AffinityRealEstate.com](http://www.AffinityRealEstate.com) | email: [info@affinityrealestate.com](mailto:info@affinityrealestate.com) | office: 218-237-3333 | fax: 218-237-3377



**\$1,225,000**  
 MLS 6719650 Lake Home  
 42310 County Highway 1  
 Ottertail MN 56571





website: [www.AffinityRealEstate.com](http://www.AffinityRealEstate.com) | email: [info@affinityrealestate.com](mailto:info@affinityrealestate.com) | office: 218-237-3333 | fax: 218-237-3377

**Affinity**  
REAL ESTATE INC

**\$1,225,000**

MLS 6719650 Lake Home  
42310 County Highway 1  
Ottertail MN 56571



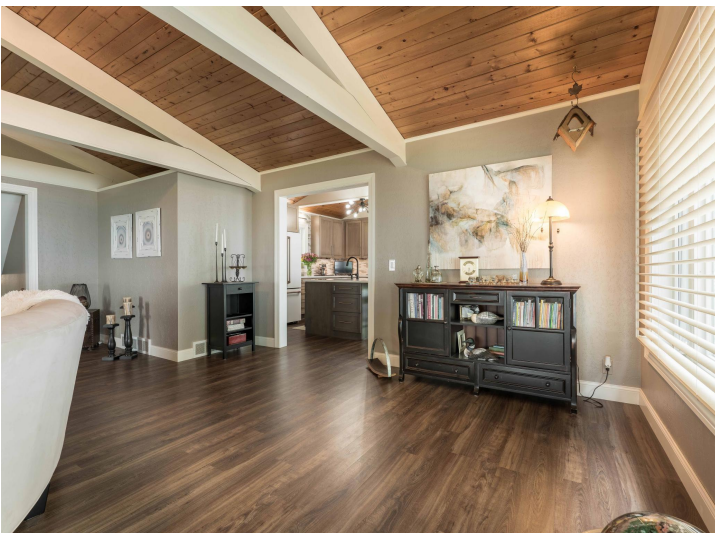


website: [www.AffinityRealEstate.com](http://www.AffinityRealEstate.com) | email: [info@affinityrealestate.com](mailto:info@affinityrealestate.com) | office: 218-237-3333 | fax: 218-237-3377

**Affinity**  
REAL ESTATE INC

**\$1,225,000**  
MLS 6719650 Lake Home  
42310 County Highway 1  
Ottertail MN 56571





website: [www.AffinityRealEstate.com](http://www.AffinityRealEstate.com) | email: [info@affinityrealestate.com](mailto:info@affinityrealestate.com) | office: 218-237-3333 | fax: 218-237-3377

**Affinity**  
REAL ESTATE INC

**\$1,225,000**

MLS 6719650 Lake Home  
42310 County Highway 1  
Ottertail MN 56571





website: [www.AffinityRealEstate.com](http://www.AffinityRealEstate.com) | email: [info@affinityrealestate.com](mailto:info@affinityrealestate.com) | office: 218-237-3333 | fax: 218-237-3377

**Affinity**  
REAL ESTATE INC

**\$1,225,000**  
MLS 6719650 Lake Home  
42310 County Highway 1  
Ottertail MN 56571





website: [www.AffinityRealEstate.com](http://www.AffinityRealEstate.com) | email: [info@affinityrealestate.com](mailto:info@affinityrealestate.com) | office: 218-237-3333 | fax: 218-237-3377



**\$1,225,000**  
 MLS 6719650 Lake Home  
 42310 County Highway 1  
 Ottertail MN 56571





website: [www.AffinityRealEstate.com](http://www.AffinityRealEstate.com) | email: [info@affinityrealestate.com](mailto:info@affinityrealestate.com) | office: 218-237-3333 | fax: 218-237-3377

**Affinity**  
REAL ESTATE INC

**\$1,225,000**  
MLS 6719650 Lake Home  
42310 County Highway 1  
Ottertail MN 56571





website: [www.AffinityRealEstate.com](http://www.AffinityRealEstate.com) | email: [info@affinityrealestate.com](mailto:info@affinityrealestate.com) | office: 218-237-3333 | fax: 218-237-3377



**\$1,225,000**  
 MLS 6719650 Lake Home  
 42310 County Highway 1  
 Ottertail MN 56571





website: [www.AffinityRealEstate.com](http://www.AffinityRealEstate.com) | email: [info@affinityrealestate.com](mailto:info@affinityrealestate.com) | office: 218-237-3333 | fax: 218-237-3377

**Affinity**  
REAL ESTATE INC

**\$1,225,000**

MLS 6719650 Lake Home  
42310 County Highway 1  
Ottertail MN 56571





website: [www.AffinityRealEstate.com](http://www.AffinityRealEstate.com) | email: [info@affinityrealestate.com](mailto:info@affinityrealestate.com) | office: 218-237-3333 | fax: 218-237-3377

**Affinity**  
REAL ESTATE INC

**\$1,225,000**  
MLS 6719650 Lake Home  
42310 County Highway 1  
Ottertail MN 56571





website: [www.AffinityRealEstate.com](http://www.AffinityRealEstate.com) | email: [info@affinityrealestate.com](mailto:info@affinityrealestate.com) | office: 218-237-3333 | fax: 218-237-3377



**\$1,225,000**

MLS 6719650 Lake Home  
42310 County Highway 1  
Ottertail MN 56571





website: [www.AffinityRealEstate.com](http://www.AffinityRealEstate.com) | email: [info@affinityrealestate.com](mailto:info@affinityrealestate.com) | office: 218-237-3333 | fax: 218-237-3377



**\$1,225,000**

MLS 6719650 Lake Home  
42310 County Highway 1  
Ottertail MN 56571





website: [www.AffinityRealEstate.com](http://www.AffinityRealEstate.com) | email: [info@affinityrealestate.com](mailto:info@affinityrealestate.com) | office: 218-237-3333 | fax: 218-237-3377



**\$1,225,000**  
 MLS 6719650 Lake Home  
 42310 County Highway 1  
 Ottertail MN 56571



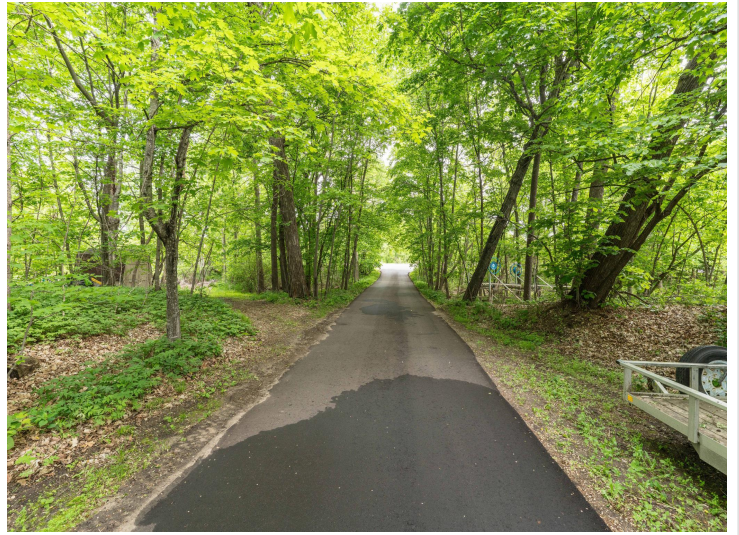
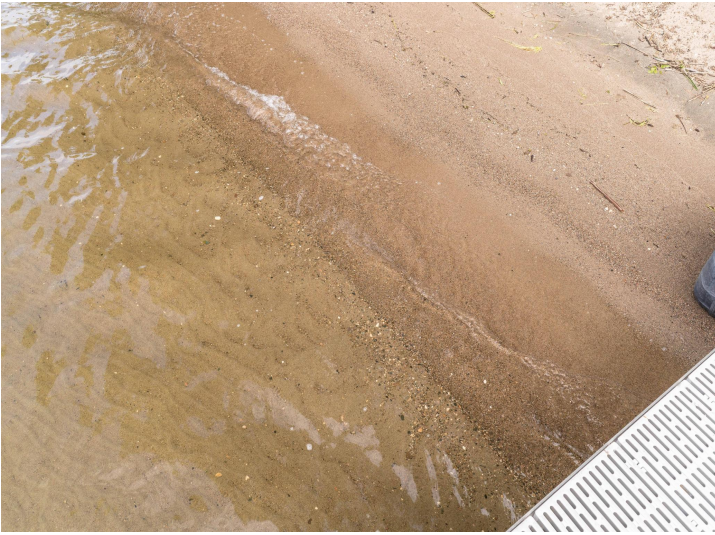


website: [www.AffinityRealEstate.com](http://www.AffinityRealEstate.com) | email: [info@affinityrealestate.com](mailto:info@affinityrealestate.com) | office: 218-237-3333 | fax: 218-237-3377



**\$1,225,000**  
 MLS 6719650 Lake Home  
 42310 County Highway 1  
 Ottertail MN 56571





website: [www.AffinityRealEstate.com](http://www.AffinityRealEstate.com) | email: [info@affinityrealestate.com](mailto:info@affinityrealestate.com) | office: 218-237-3333 | fax: 218-237-3377



**\$1,225,000**

MLS 6719650 Lake Home  
42310 County Highway 1  
Ottertail MN 56571





website: [www.AffinityRealEstate.com](http://www.AffinityRealEstate.com) | email: [info@affinityrealestate.com](mailto:info@affinityrealestate.com) | office: 218-237-3333 | fax: 218-237-3377



**\$1,225,000**

MLS 6719650 Lake Home  
42310 County Highway 1  
Ottertail MN 56571





website: [www.AffinityRealEstate.com](http://www.AffinityRealEstate.com) | email: [info@affinityrealestate.com](mailto:info@affinityrealestate.com) | office: 218-237-3333 | fax:218-237-3377



**\$1,225,000**

MLS 6719650 Lake Home  
42310 County Highway 1  
Ottertail MN 56571