



MLS 6719668 Lake Home

\$361,215

1,162 sq ft
2 bedrooms
2 baths

715 Lake Shore Drive
Bemidji MN 56601

Waterfront: Bemidji (main lake)

Status: Active

Description:

Discover Bemidji's premier condominiums on the south shore of Lake Bemidji, designed for a convenient lifestyle—no shoveling, no mowing, and secure indoor parking. Unit 205 features 2 bedrooms, 2 bathrooms, and 1,162 square feet of bright living space with cheerful south-facing views. Amenities include climate-controlled indoor parking, two elevators, a lakeside patio, triple-pane windows, soundproof insulation, private balconies, quartz countertops, and Onyx shower systems. The association fee covers snow removal, lawn care, natural gas, water, sewer, and refuse. Simplify your life and make time for what you love. Schedule a tour today!

Additional Details:

Year Built	2022
Lot Acres	0.06
Lot Dimensions	348x228
Garage Stalls	1
School District	31
Taxes	\$3,956
Taxes with Assessments	\$3,956
Tax Year	2025

Additional Features:

Basement: None **Fuel:** Electric **Garage:** 1 **Heat:** Ductless Mini-Split, Heat Pump **Sewer:** City Sewer/Connected **Water:** City Water/Connected
Air Conditioning: Ductless Mini-Split

Driving Directions:

Paul Bunyan Drive S. to Left on Lake Avenue, first Left, go around the round about. Right on Lake Shore Drive. Condos on the left.



Listed By:
Lake-N-Woods Realty

Affinity Real Estate Inc. participates in the Regional Multiple Listing Service of Minnesota, Inc Broker Reciprocity (sm) program, allowing us to display other broker's listings on our website. All properties are subject to prior sale, change or withdrawal.



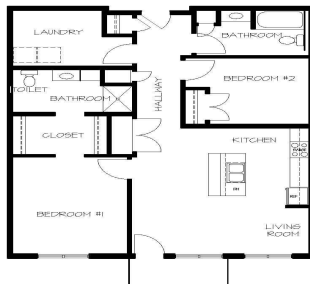
Call Affinity Real Estate

218-237-3333

info@affinityrealestate.com



Affinity Real Estate - 600 Park Avenue South - Park Rapids MN 56470



website: www.AffinityRealEstate.com | email: info@affinityrealestate.com | office: 218-237-3333 | fax: 218-237-3377



\$361,215
 MLS 6719668 Lake Home
 715 Lake Shore Drive
 Bemidji MN 56601