



MLS 6719670 Land

**\$15,500**

11329 Square Feet  
Finished Lot(s)

905 Red Willow Drive  
Frazee MN 56544

Status: Active

**Description:**

Build Your Dream Home in Frazee! Now is the perfect time to invest in your future at Red Willow Heights, a premier housing development nestled in the welcoming community of Frazee, Minnesota. With all residential lots priced under \$20,000, this is your chance to build a custom home at an unbeatable value! Choose your own contractor and bring your vision to life on your terms.

Frazee is rolling out the red carpet for new homeowners with exceptional city incentives! Construct a new home within city limits and enjoy:

Free water & sewer consumption for one full year, along with complimentary recycling and 38-gallon garbage toter service for one year. These incentives mean real savings and more money in your pocket during your first year of homeownership!

Enjoy the convenience of being just minutes from schools, parks, and downtown Frazee — perfect for anyone looking to settle in a growing community with small-town charm.

**Additional Details:**

Lot Acres	11329
Lot Dimensions	115x96
School District	1106
Taxes	(unreported)
Taxes with Assessments	(unreported)
Tax Year	2025

**Additional Features:**

**Driving Directions:**

off of Birch Ave to Red Willow



Listed By:  
eXp Realty (3788 FGO)

Affinity Real Estate Inc. participates in the Regional Multiple Listing Service of Minnesota, Inc Broker Reciprocity (sm) program, allowing us to display other broker's listings on our website. All properties are subject to prior sale, change or withdrawal.



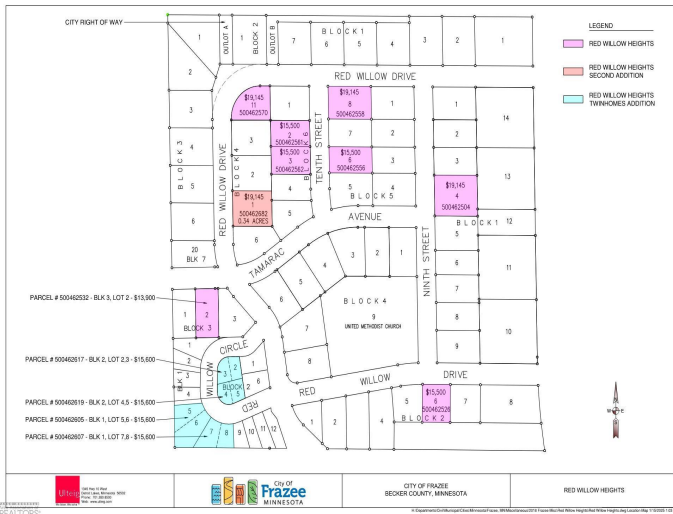
**Call Affinity Real Estate**

**218-237-3333**

**info@affinityrealestate.com**



**Affinity Real Estate - 600 Park Avenue South - Park Rapids MN 56470**



website: [www.AffinityRealEstate.com](http://www.AffinityRealEstate.com) | email: [info@affinityrealestate.com](mailto:info@affinityrealestate.com) | office: 218-237-3333 | fax: 218-237-3377



**\$15,500**  
 MLS 6719670 Land  
 905 Red Willow Drive  
 Frazee MN 56544



website: [www.AffinityRealEstate.com](http://www.AffinityRealEstate.com) | email: [info@affinityrealestate.com](mailto:info@affinityrealestate.com) | office: 218-237-3333 | fax:218-237-3377



**\$15,500**  
MLS 6719670 Land  
905 Red Willow Drive  
Frazee MN 56544



website: [www.AffinityRealEstate.com](http://www.AffinityRealEstate.com) | email: [info@affinityrealestate.com](mailto:info@affinityrealestate.com) | office: 218-237-3333 | fax:218-237-3377



**\$15,500**  
 MLS 6719670 Land  
 905 Red Willow Drive  
 Frazee MN 56544