



MLS 6719675 Land

\$15,600

0.21 Square Feet
Finished Lot(s)

1111 Red Willow Circle
Frazee MN 56544

Status: Active

Description:

Build Your Dream Home in Frazee! Now is the perfect time to invest in your future at Red Willow Heights, a premier housing development nestled in the welcoming community of Frazee, Minnesota. With all residential lots priced under \$20,000, this is your chance to build a custom home at an unbeatable value! Choose your own contractor and bring your vision to life on your terms.

Frazee is rolling out the red carpet for new homeowners with exceptional city incentives! Construct a new home within city limits and enjoy:

Free water & sewer consumption for one full year, along with complimentary recycling and 38-gallon garbage toter service for one year. These incentives mean real savings and more money in your pocket during your first year of homeownership!

Enjoy the convenience of being just minutes from schools, parks, and downtown Frazee — perfect for anyone looking to settle in a growing community with small-town charm.

Additional Details:

Lot Acres	0.21
Lot Dimensions	irregular
School District	23
Taxes	(unreported)
Taxes with Assessments	(unreported)
Tax Year	2025

Additional Features:

Driving Directions:



Listed By:
eXp Realty (3788 FGO)

Affinity Real Estate Inc. participates in the Regional Multiple Listing Service of Minnesota, Inc Broker Reciprocity (sm) program, allowing us to display other broker's listings on our website. All properties are subject to prior sale, change or withdrawal.



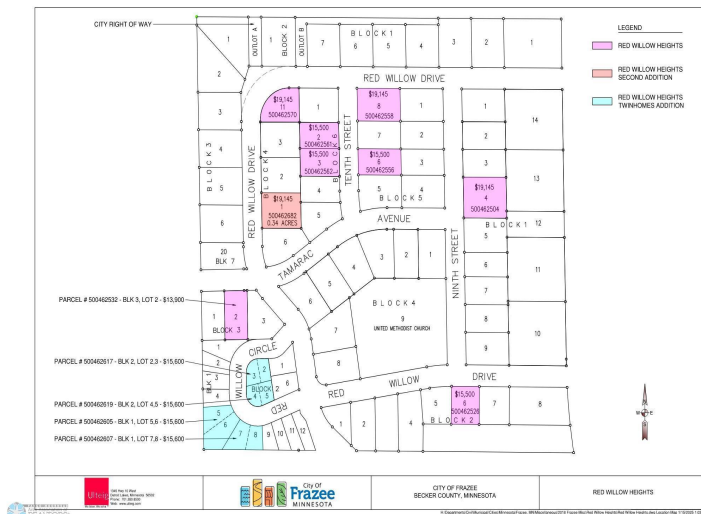
Call Affinity Real Estate

218-237-3333

info@affinityrealestate.com



Affinity Real Estate - 600 Park Avenue South - Park Rapids MN 56470



website: www.AffinityRealEstate.com | email: info@affinityrealestate.com | office: 218-237-3333 | fax: 218-237-3377

Affinity
REAL ESTATE INC

\$15,600
MLS 6719675 Land
1111 Red Willow Circle
Frazee MN 56544



website: www.AffinityRealEstate.com | email: info@affinityrealestate.com | office: 218-237-3333 | fax: 218-237-3377



\$15,600
 MLS 6719675 Land
 1111 Red Willow Circle
 Frazee MN 56544



website: www.AffinityRealEstate.com | email: info@affinityrealestate.com | office: 218-237-3333 | fax: 218-237-3377



\$15,600
 MLS 6719675 Land
 1111 Red Willow Circle
 Frazee MN 56544