



MLS 6720066 Residential

\$179,900

1,342 sq ft
3 bedrooms
1 baths

614 8th Street
Brainerd MN 56401

Status: Pending

Description:

Check out this charming home located in the heart of Brainerd situated near the schools, YMCA and all the local conveniences. You will be greeted by original hardwood floors that add character and warmth to the open living space. The kitchen features a gas range, dishwasher and ample space off the backyard to host a BBQ. Enjoy the two main-level bedrooms and large upper-level bedroom with an updated full bathroom on the main level. The delightful front porch currently serves as a bright and airy office with lots of natural light for remote work, porch or flex space!

Additional Details:

Year Built	1920
Lot Acres	0.12
Lot Dimensions	38x139
Garage Stalls	1
School District	181
Taxes	\$1,689
Taxes with Assessments	\$1,714
Tax Year	2025

Additional Features:

Basement: Partial, Concrete, Unfinished **Fuel:** Natural Gas **Garage:** 1 **Heat:** Forced Air **Sewer:** City Sewer/Connected **Water:** City Water/Connected **Air Conditioning:** Central Air

Driving Directions:

South 6th Street, Left(East) on Oak Street, Right on 8th Street, House on Right.



Listed By:
Edina Realty, Inc.

Affinity Real Estate Inc. participates in the Regional Multiple Listing Service of Minnesota, Inc Broker Reciprocity (sm) program, allowing us to display other broker's listings on our website. All properties are subject to prior sale, change or withdrawal.



Call Affinity Real Estate

218-237-3333

info@affinityrealestate.com



Affinity Real Estate - 600 Park Avenue South - Park Rapids MN 56470



website: www.AffinityRealEstate.com | email: info@affinityrealestate.com | office: 218-237-3333 | fax: 218-237-3377



\$179,900
MLS 6720066 Residential
614 8th Street
Brainerd MN 56401



website: www.AffinityRealEstate.com | email: info@affinityrealestate.com | office: 218-237-3333 | fax: 218-237-3377

Affinity
REAL ESTATE INC

\$179,900
MLS 6720066 Residential
614 8th Street
Brainerd MN 56401



website: www.AffinityRealEstate.com | email: info@affinityrealestate.com | office: 218-237-3333 | fax: 218-237-3377

Affinity
REAL ESTATE INC

\$179,900
MLS 6720066 Residential
614 8th Street
Brainerd MN 56401



website: www.AffinityRealEstate.com | email: info@affinityrealestate.com | office: 218-237-3333 | fax: 218-237-3377



\$179,900
MLS 6720066 Residential
614 8th Street
Brainerd MN 56401



website: www.AffinityRealEstate.com | email: info@affinityrealestate.com | office: 218-237-3333 | fax: 218-237-3377

Affinity
REAL ESTATE INC

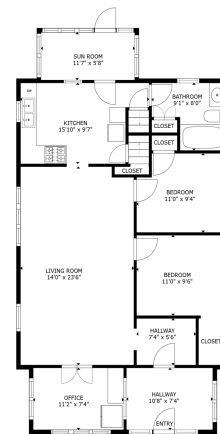
\$179,900
MLS 6720066 Residential
614 8th Street
Brainerd MN 56401



website: www.AffinityRealEstate.com | email: info@affinityrealestate.com | office: 218-237-3333 | fax: 218-237-3377



\$179,900
MLS 6720066 Residential
614 8th Street
Brainerd MN 56401



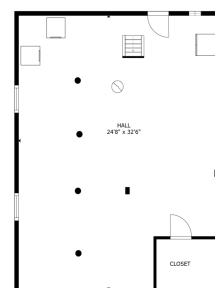
FLOOR 2

GROSS INTERNAL AREA
FLOOR 1: 881 sq. ft. FLOOR 2: 1,083 sq. ft.
FLOOR 3: 289 sq. ft. TOTAL: 2,253 sq. ft.
SIZES AND DIMENSIONS ARE APPROXIMATE. ACTUAL MAY VARY.



FLOOR 3

GROSS INTERNAL AREA
FLOOR 1: 881 sq. ft. FLOOR 2: 1,083 sq. ft.
FLOOR 3: 289 sq. ft. TOTAL: 2,253 sq. ft.
SIZES AND DIMENSIONS ARE APPROXIMATE. ACTUAL MAY VARY.



FLOOR 1

GROSS INTERNAL AREA
FLOOR 1: 881 sq. ft. FLOOR 2: 1,083 sq. ft.
FLOOR 3: 289 sq. ft. TOTAL: 2,253 sq. ft.
SIZES AND DIMENSIONS ARE APPROXIMATE. ACTUAL MAY VARY.



website: www.AffinityRealEstate.com | email: info@affinityrealestate.com | office: 218-237-3333 | fax: 218-237-3377



\$179,900
MLS 6720066 Residential
614 8th Street
Brainerd MN 56401



website: www.AffinityRealEstate.com | email: info@affinityrealestate.com | office: 218-237-3333 | fax: 218-237-3377



\$179,900
MLS 6720066 Residential
614 8th Street
Brainerd MN 56401