



MLS 6720148 Lake Land

\$199,900

Description:

50 Acres of Secluded Hunting Paradise – Bordering 30,000+ Acres of County Land

If you've been searching for the ultimate hunting sanctuary or private wilderness retreat, this is the property you've been waiting for. Tucked deep in the woods and surrounded by nature, this expansive 50-acre parcel offers unmatched privacy, peace, and access to a true sportsman's paradise.

What sets this land apart? It directly borders over 30,000 acres of public county land, giving you virtually unlimited room to roam, scout, and hunt. Imagine stepping out of your future hunting shack, cabin, or camper and into thousands of acres of undisturbed forest teeming with wildlife.

This property hasn't been hunted in years, creating a haven for whitetail deer, black bear, grouse, ducks, and other native game. Whether you prefer bow hunting or rifle season, upland birds or waterfowl, this is a dream come true for seasoned hunters and outdoor lovers alike.

From thick timber and rolling terrain to natural clearings and potential food plot sites, the land features a strong mix of cover and habitat. The peace and quiet here are unmatched — no highway noise, no traffic, just the sounds of the wild and the freedom to explore.

Well-marked and easy to locate with signs posted at the property, access is convenient while still offering that rare "middle of nowhere" feel. This is more than a piece of land — it's a legacy property, perfect for weekend getaways, off-grid living, or creating your own hunting camp to enjoy for generations.

Don't miss your chance to own a truly unique property that checks every box for hunting, privacy, and adventure.

Additional Details:

Lot Acres	48.5
Lot Dimensions	1332x1962x1563x2272
School District	309

Taxes	\$248
-------	-------

1	Broker Reciprocity	Listed By	\$248
		ends	LPT Realty, LLC
Tax year			2024

Affinity Real Estate Inc. participates in the Regional Multiple Listing Service of Minnesota, Inc Broker Reciprocity (sm) program, allowing us to display other broker's listings on our website. All properties are subject to prior sale, change or withdrawal.

Driving Directions:



Call Affinity Real Estate

218-237-3333

info@affinityrealestate.com



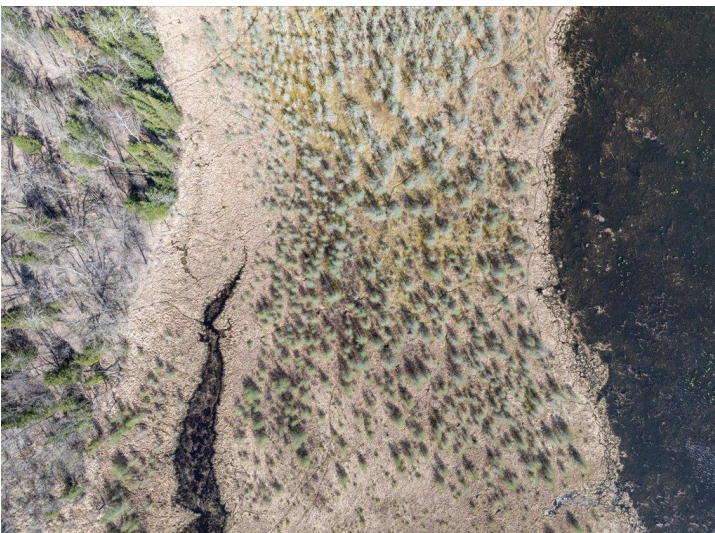
Affinity Real Estate - 600 Park Avenue South - Park Rapids MN 56470



website: www.AffinityRealEstate.com | email: info@affinityrealestate.com | office: 218-237-3333 | fax: 218-237-3377



\$199,900
 MLS 6720148 Lake Land
 TBD xxx
 Park Rapids MN 56470



website: www.AffinityRealEstate.com | email: info@affinityrealestate.com | office: 218-237-3333 | fax: 218-237-3377



\$199,900
 MLS 6720148 Lake Land
 TBD xxx
 Park Rapids MN 56470



website: www.AffinityRealEstate.com | email: info@affinityrealestate.com | office: 218-237-3333 | fax: 218-237-3377



\$199,900
 MLS 6720148 Lake Land
 TBD xxx
 Park Rapids MN 56470



website: www.AffinityRealEstate.com | email: info@affinityrealestate.com | office: 218-237-3333 | fax: 218-237-3377



\$199,900

MLS 6720148 Lake Land

TBD xxx

Park Rapids MN 56470