



MLS 6720236 Lake Home

\$538,500

1,904 sq ft
3 bedrooms
2 baths

715 Lake Shore Drive
Bemidji MN 56601

Waterfront: Bemidji (main lake)

Status: Active

Description:

Welcome to Bemidji's premier lakeside condominiums on the south shore of Lake Bemidji! We are excited to introduce this fabulous 3-bedroom lakeside home that could be yours. This floor plan, known as 'The North Star,' features 3 bedrooms, 2 baths, and a spacious 1,904 square feet, complete with ample storage throughout. Unit 115 is located on the first floor, offering lake views from the living room and every bedroom. Additional amenities include climate-controlled secure indoor parking, two elevators, a lakeside patio, triple-pane windows, soundproof insulation, and private balconies. Each residence is equipped with quartz countertops and Onyx shower systems. Living at The Bixby provides an ultra-convenient lifestyle, eliminating the need for lawn mowing, tree trimming, or snow plowing. The association fee also covers natural gas, water, sewer, and refuse services. Schedule a tour today and see how easy life can be!

Additional Details:

Year Built	2022
Lot Acres	0.06
Lot Dimensions	348x228
Garage Stalls	1
School District	31
Taxes	\$5,658
Taxes with Assessments	\$5,658
Tax Year	2025

Additional Features:

Basement: None **Fuel:** Electric **Garage:** 1 **Heat:** Ductless Mini-Split, Heat Pump **Sewer:** City Sewer/Connected **Water:** City Water/Connected
Air Conditioning: Ductless Mini-Split

Driving Directions:

Paul Bunyan Drive S., turn East on Lake Ave. Take the first left, go around the roundabout, turn right at the stop sign condos are on the left.



Listed By:
Lake-N-Woods Realty

Affinity Real Estate Inc. participates in the Regional Multiple Listing Service of Minnesota, Inc Broker Reciprocity (sm) program, allowing us to display other broker's listings on our website. All properties are subject to prior sale, change or withdrawal.



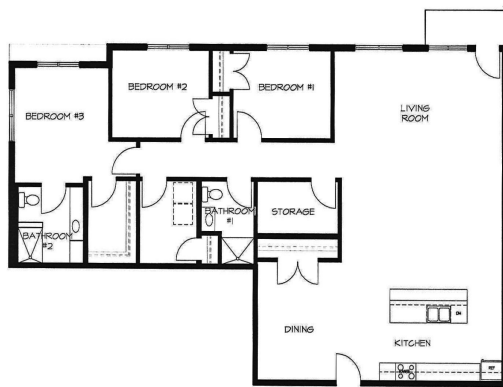
Call Affinity Real Estate

218-237-3333

info@affinityrealestate.com



Affinity Real Estate - 600 Park Avenue South - Park Rapids MN 56470



website: www.AffinityRealEstate.com | email: info@affinityrealestate.com | office: 218-237-3333 | fax: 218-237-3377

Affinity
REAL ESTATE INC

\$538,500

MLS 6720236 Lake Home
715 Lake Shore Drive
Bemidji MN 56601



website: www.AffinityRealEstate.com | email: info@affinityrealestate.com | office: 218-237-3333 | fax:218-237-3377



\$538,500

MLS 6720236 Lake Home
715 Lake Shore Drive
Bemidji MN 56601