



MLS 6720280 Lake Home

\$1,575,000

3,434 sq ft
3 bedrooms
4 baths

22882 State 64
Akeley MN 56433

Waterfront: Mud Lake (29004400)

Status: Active

Description:

A True Rarity – Your Dream Property Awaits!

It's not every day that a property as exceptional as this comes to market. This custom-built 3-bedroom, 4-bathroom home with stunning log siding offers a one-of-a-kind opportunity for outdoor enthusiasts, horse lovers, and those seeking ultimate privacy and tranquility.

From the moment you step inside, you'll be greeted by an impressive floor-to-ceiling Wilkening wood burning fireplace, a chef's dream kitchen with quartz tops and Hickory cabinets, and an expansive open floor plan that seamlessly blends comfort and elegance. The walk-out basement is an entertainer's paradise, featuring a cozy family room with gas fireplace and a relaxing sauna.

Venture outside to discover an incredible array of amenities, including a, 40'x80' Foltz shop with concrete flooring and ample storage space, 40x40 of that space is heated and insulated and the other 40x40 area is cold storage. Right next to the 30± acre paddock sits a 36'x56' with 8' lean-to Foltz horse barn complete with living quarters and 3/4 bath—perfect for both your animals and guests.

For those who love to explore, the property spans 179± acres of diverse land, from lush woodlands and lowlands to productive tillable fields and serene ponds. Ride your horse or walk the groomed trails while taking in the breathtaking views. The variety of terrain supports a thriving wildlife population, including trophy-class deer, bear, turkey, and grouse.

With 835'± of private lakeshore on a peaceful, non-public-access lake, you can swim, fish, or waterfowl hunt right outside your door. The lake's depth reaches 30'±, offering fantastic fishing opportunities year-round.

Don't miss the chance to own this rare and remarkable property!

Additional Details:

Year Built 2000
Lot Acres 179.73

Lot Dimensions See Aerial Map

Broker Reciprocity Listed By Edina Realty, Inc.

School District 113
Affinity Real Estate Inc. participates in the Regional Multiple Listing Service of Minnesota, Inc Broker Reciprocity (sm) program, allowing Taxes with Assessment listing on our website. All properties are subject to prior sale, change or withdrawal.
Tax Year 2025



Call Affinity Real Estate

218-237-3333

info@affinityrealestate.com



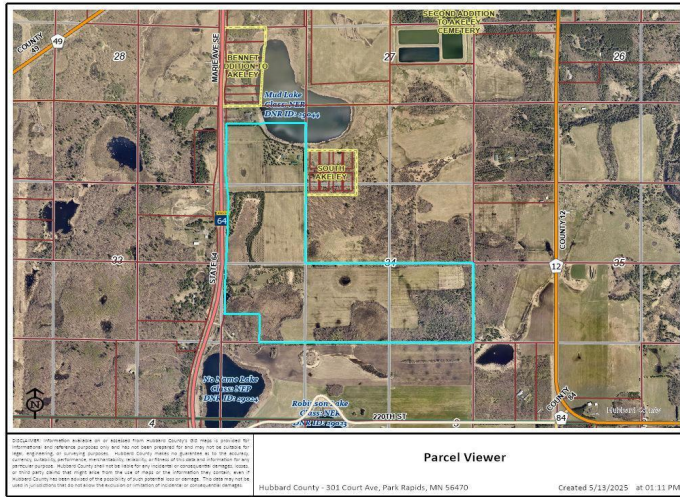
Affinity Real Estate - 600 Park Avenue South - Park Rapids MN 56470



website: www.AffinityRealEstate.com | email: info@affinityrealestate.com | office: 218-237-3333 | fax: 218-237-3377



\$1,575,000
 MLS 6720280 Lake Home
 22882 State 64
 Akeley MN 56433



website: www.AffinityRealEstate.com | email: info@affinityrealestate.com | office: 218-237-3333 | fax: 218-237-3377



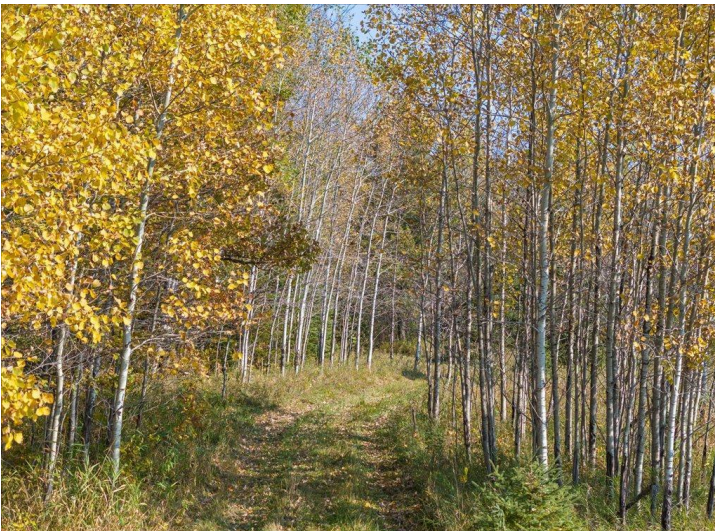
\$1,575,000
 MLS 6720280 Lake Home
 22882 State 64
 Akeley MN 56433



website: www.AffinityRealEstate.com | email: info@affinityrealestate.com | office: 218-237-3333 | fax: 218-237-3377



\$1,575,000
 MLS 6720280 Lake Home
 22882 State 64
 Akeley MN 56433



website: www.AffinityRealEstate.com | email: info@affinityrealestate.com | office: 218-237-3333 | fax: 218-237-3377



\$1,575,000

MLS 6720280 Lake Home
22882 State 64
Akeley MN 56433



website: www.AffinityRealEstate.com | email: info@affinityrealestate.com | office: 218-237-3333 | fax: 218-237-3377



\$1,575,000
 MLS 6720280 Lake Home
 22882 State 64
 Akeley MN 56433



website: www.AffinityRealEstate.com | email: info@affinityrealestate.com | office: 218-237-3333 | fax: 218-237-3377



\$1,575,000
 MLS 6720280 Lake Home
 22882 State 64
 Akeley MN 56433



website: www.AffinityRealEstate.com | email: info@affinityrealestate.com | office: 218-237-3333 | fax: 218-237-3377



\$1,575,000
 MLS 6720280 Lake Home
 22882 State 64
 Akeley MN 56433



website: www.AffinityRealEstate.com | email: info@affinityrealestate.com | office: 218-237-3333 | fax: 218-237-3377

Affinity
REAL ESTATE INC

\$1,575,000

MLS 6720280 Lake Home
22882 State 64
Akeley MN 56433



website: www.AffinityRealEstate.com | email: info@affinityrealestate.com | office: 218-237-3333 | fax: 218-237-3377

Affinity
REAL ESTATE INC

\$1,575,000
MLS 6720280 Lake Home
22882 State 64
Akeley MN 56433



website: www.AffinityRealEstate.com | email: info@affinityrealestate.com | office: 218-237-3333 | fax: 218-237-3377

Affinity
REAL ESTATE INC

\$1,575,000
MLS 6720280 Lake Home
22882 State 64
Akeley MN 56433



website: www.AffinityRealEstate.com | email: info@affinityrealestate.com | office: 218-237-3333 | fax: 218-237-3377



\$1,575,000
MLS 6720280 Lake Home
22882 State 64
Akeley MN 56433

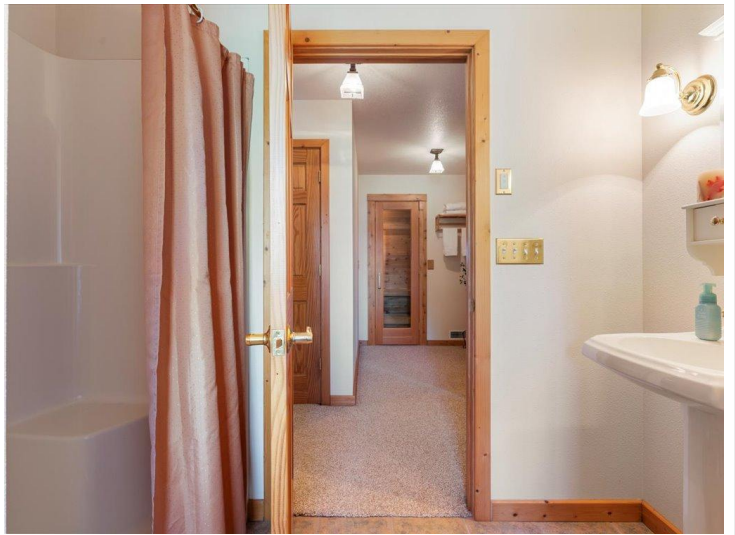


website: www.AffinityRealEstate.com | email: info@affinityrealestate.com | office: 218-237-3333 | fax: 218-237-3377

Affinity
REAL ESTATE INC

\$1,575,000

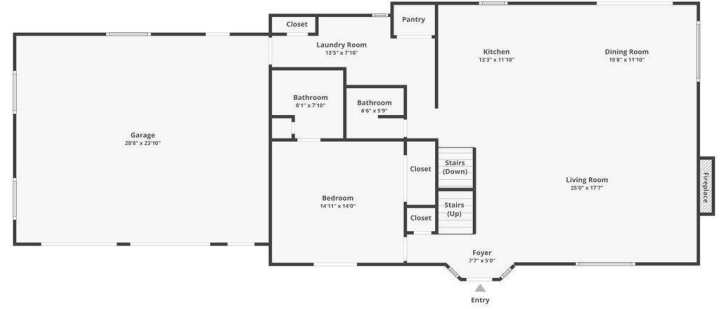
MLS 6720280 Lake Home
22882 State 64
Akeley MN 56433



website: www.AffinityRealEstate.com | email: info@affinityrealestate.com | office: 218-237-3333 | fax: 218-237-3377

Affinity
REAL ESTATE INC

\$1,575,000
MLS 6720280 Lake Home
22882 State 64
Akeley MN 56433



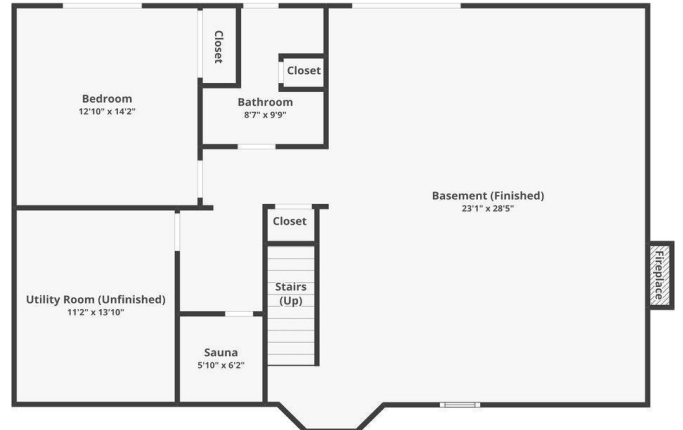
is # 64, Akeley, MN 56433

This plan sheet cannot be used for building or design purposes. Size and dimensions are approximate.



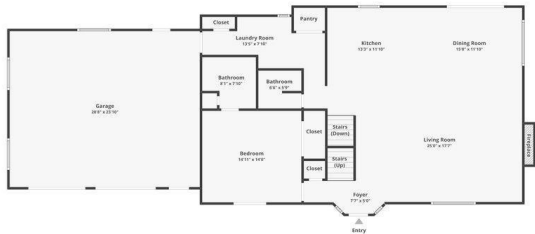
is # 64, Akeley, MN 56433

This plan sheet cannot be used for building or design purposes. Size and dimensions are approximate.



is # 64, Akeley, MN 56433

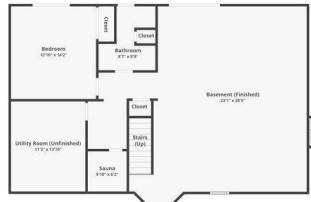
This plan sheet cannot be used for building or design purposes. Size and dimensions are approximate.



FLOOR 1



FLOOR 2



BASEMENT

is # 64, Akeley, MN 56433

This plan sheet cannot be used for building or design purposes. Size and dimensions are approximate.



website: www.AffinityRealEstate.com | email: info@affinityrealestate.com | office: 218-237-3333 | fax: 218-237-3377

Affinity
REAL ESTATE INC

\$1,575,000

MLS 6720280 Lake Home
22882 State 64
Akeley MN 56433



website: www.AffinityRealEstate.com | email: info@affinityrealestate.com | office: 218-237-3333 | fax: 218-237-3377

Affinity
REAL ESTATE INC

\$1,575,000

MLS 6720280 Lake Home
22882 State 64
Akeley MN 56433



website: www.AffinityRealEstate.com | email: info@affinityrealestate.com | office: 218-237-3333 | fax: 218-237-3377



\$1,575,000
 MLS 6720280 Lake Home
 22882 State 64
 Akeley MN 56433



website: www.AffinityRealEstate.com | email: info@affinityrealestate.com | office: 218-237-3333 | fax: 218-237-3377

Affinity
REAL ESTATE INC

\$1,575,000
MLS 6720280 Lake Home
22882 State 64
Akeley MN 56433



website: www.AffinityRealEstate.com | email: info@affinityrealestate.com | office: 218-237-3333 | fax: 218-237-3377



\$1,575,000
MLS 6720280 Lake Home
22882 State 64
Akeley MN 56433