



MLS 6720449 Lake Home

\$179,900

572 sq ft
2 bedrooms
1 baths

25186 US 71
Park Rapids MN 56470

Waterfront: Eagle

Status: Active

Description:

Eagle Bay Cabin – Lake Life Without the Hassle! Enjoy all the perks of lakefront living without the upkeep in this charming 2-bedroom, 1-bath cabin, new roof, comes furnished and located in a resortaminium community, where you'll have the opportunity to become a shareholder. Just steps from your door, you'll find the lodge, laundry facilities, a perfect sandy beach, and a dedicated dock slip for your boat. Resort amenities include lake toys, a heated outdoor pool, basketball, and pickleball/tennis courts — perfect for active lifestyles or relaxing getaways. Nestled next to Eagle View Golf Course, and just 10 minutes from Itasca State Park, you're also close to local restaurants, scenic hiking trails, and other recreational activities. When you're not enjoying it yourself, this cabin can be rented out during peak weeks through the resort association — making it a smart investment as well as a retreat.

Additional Details:

Year Built	1960
Lot Acres	20.86
Lot Dimensions	irregular
School District	309
Taxes	\$1,470
Taxes with Assessments	\$1,470
Tax Year	2025

Additional Features:

Fuel: Electric **Heat:** Baseboard

Driving Directions:

Take Highway 71 North 8.5 miles past golf course and turn right into Eagle Bay Resort. Continue onto resort area. Cabin #18 is directly across from main lodge.



Listed By:
Affinity Real Estate Inc.

Affinity Real Estate Inc. participates in the Regional Multiple Listing Service of Minnesota, Inc Broker Reciprocity (sm) program, allowing us to display other broker's listings on our website. All properties are subject to prior sale, change or withdrawal.



Call Affinity Real Estate

218-237-3333

info@affinityrealestate.com



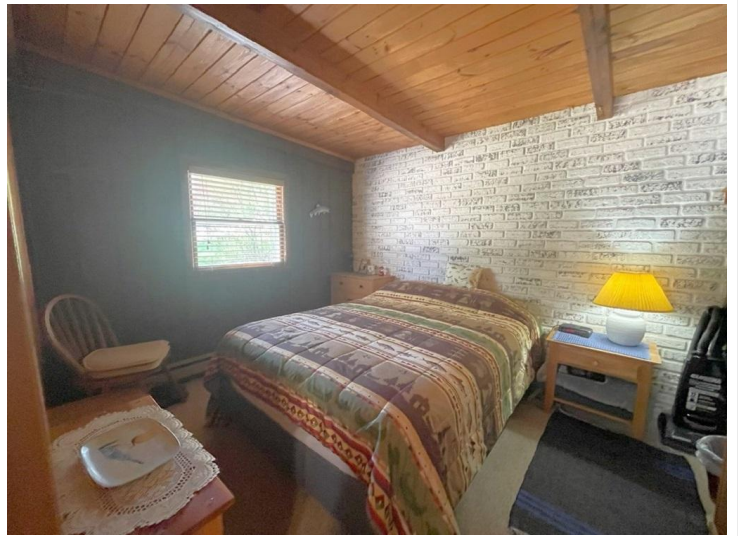
Affinity Real Estate - 600 Park Avenue South - Park Rapids MN 56470



website: www.AffinityRealEstate.com | email: info@affinityrealestate.com | office: 218-237-3333 | fax: 218-237-3377

Affinity
REAL ESTATE INC

\$179,900
MLS 6720449 Lake Home
25186 US 71
Park Rapids MN 56470



website: www.AffinityRealEstate.com | email: info@affinityrealestate.com | office: 218-237-3333 | fax: 218-237-3377

Affinity
REAL ESTATE INC

\$179,900
MLS 6720449 Lake Home
25186 US 71
Park Rapids MN 56470



website: www.AffinityRealEstate.com | email: info@affinityrealestate.com | office: 218-237-3333 | fax: 218-237-3377

Affinity
REAL ESTATE INC

\$179,900
MLS 6720449 Lake Home
25186 US 71
Park Rapids MN 56470



website: www.AffinityRealEstate.com | email: info@affinityrealestate.com | office: 218-237-3333 | fax: 218-237-3377



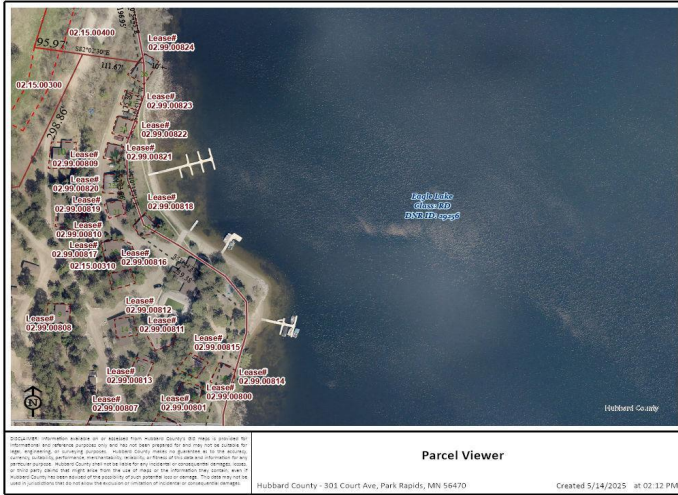
\$179,900
 MLS 6720449 Lake Home
 25186 US 71
 Park Rapids MN 56470



website: www.AffinityRealEstate.com | email: info@affinityrealestate.com | office: 218-237-3333 | fax: 218-237-3377

Affinity
REAL ESTATE INC

\$179,900
MLS 6720449 Lake Home
25186 US 71
Park Rapids MN 56470



website: www.AffinityRealEstate.com | email: info@affinityrealestate.com | office: 218-237-3333 | fax:218-237-3377



\$179,900
MLS 6720449 Lake Home
25186 US 71
Park Rapids MN 56470