



MLS 6720479 Residential

**\$324,900**

1,368 sq ft  
3 bedrooms  
2 baths

2506 Woodridge Lane  
Brainerd MN 56401

Status: Active

**Description:**

Don't miss this beautiful three bedroom, two bath Brainerd townhouse. Home features an open floor plan, main floor living at it's finest, vaulted ceilings, a four season porch, fireplace in the living room, a built-in entertainment center, large primary bedroom with walk-in closet and private bath, private patio, an attached two car garage and walking trails right in your back yard. This is a must see.

**Additional Details:**

Year Built	2000
Lot Acres	0.14
Lot Dimensions	50 x 120
Garage Stalls	2
School District	181
Taxes	\$3,124
Taxes with Assessments	\$3,124
Tax Year	2024

**Additional Features:**

**Basement:** None **Fuel:** Natural Gas **Garage:** 2 **Heat:** Forced Air, Fireplace(s) **Sewer:** City Sewer/Connected **Water:** City Water/Connected **Air Conditioning:** Central Air

**Driving Directions:**

South on 6th street Brainerd to West (R) on Buffalo Hills Lane, left on Crestview, right on Woodridge Lane to property on right



Listed By:  
eXp Realty

Affinity Real Estate Inc. participates in the Regional Multiple Listing Service of Minnesota, Inc Broker Reciprocity (sm) program, allowing us to display other broker's listings on our website. All properties are subject to prior sale, change or withdrawal.



**Call Affinity Real Estate**

**218-237-3333**

**info@affinityrealestate.com**



**Affinity Real Estate - 600 Park Avenue South - Park Rapids MN 56470**





website: [www.AffinityRealEstate.com](http://www.AffinityRealEstate.com) | email: [info@affinityrealestate.com](mailto:info@affinityrealestate.com) | office: 218-237-3333 | fax: 218-237-3377



**\$324,900**  
 MLS 6720479 Residential  
 2506 Woodridge Lane  
 Brainerd MN 56401





website: [www.AffinityRealEstate.com](http://www.AffinityRealEstate.com) | email: [info@affinityrealestate.com](mailto:info@affinityrealestate.com) | office: 218-237-3333 | fax: 218-237-3377

**Affinity**  
REAL ESTATE INC

**\$324,900**  
MLS 6720479 Residential  
2506 Woodridge Lane  
Brainerd MN 56401





website: [www.AffinityRealEstate.com](http://www.AffinityRealEstate.com) | email: [info@affinityrealestate.com](mailto:info@affinityrealestate.com) | office: 218-237-3333 | fax: 218-237-3377

**Affinity**  
REAL ESTATE INC

**\$324,900**  
MLS 6720479 Residential  
2506 Woodridge Lane  
Brainerd MN 56401



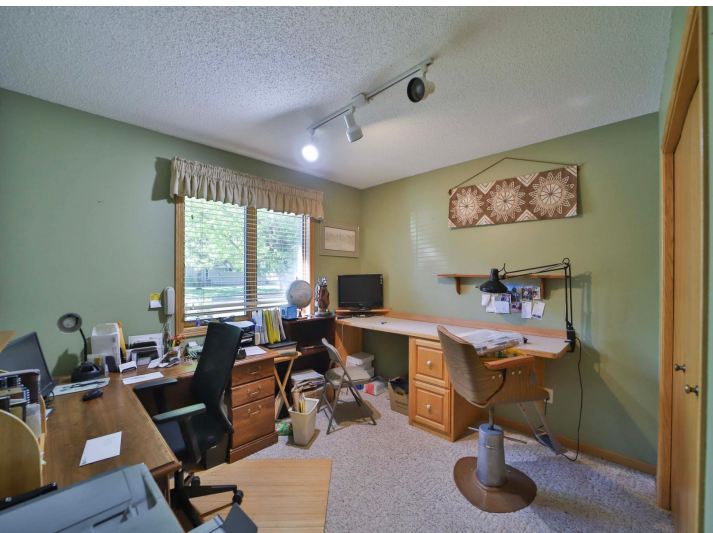


website: [www.AffinityRealEstate.com](http://www.AffinityRealEstate.com) | email: [info@affinityrealestate.com](mailto:info@affinityrealestate.com) | office: 218-237-3333 | fax: 218-237-3377

**Affinity**  
REAL ESTATE INC

**\$324,900**  
MLS 6720479 Residential  
2506 Woodridge Lane  
Brainerd MN 56401





website: [www.AffinityRealEstate.com](http://www.AffinityRealEstate.com) | email: [info@affinityrealestate.com](mailto:info@affinityrealestate.com) | office: 218-237-3333 | fax: 218-237-3377

**Affinity**  
REAL ESTATE INC

**\$324,900**  
MLS 6720479 Residential  
2506 Woodridge Lane  
Brainerd MN 56401





website: [www.AffinityRealEstate.com](http://www.AffinityRealEstate.com) | email: [info@affinityrealestate.com](mailto:info@affinityrealestate.com) | office: 218-237-3333 | fax: 218-237-3377

**Affinity**  
REAL ESTATE INC

**\$324,900**  
MLS 6720479 Residential  
2506 Woodridge Lane  
Brainerd MN 56401





website: [www.AffinityRealEstate.com](http://www.AffinityRealEstate.com) | email: [info@affinityrealestate.com](mailto:info@affinityrealestate.com) | office: 218-237-3333 | fax: 218-237-3377



**\$324,900**  
MLS 6720479 Residential  
2506 Woodridge Lane  
Brainerd MN 56401