



MLS 6720992 Lake Land

\$1,250,000

Description:

The views and tranquility of this property are stunning. Entering through the gated entrance, you find a spacious 60x104 pole building with 14-foot tall doors and 16-foot high inside trusses that overlook the landscape edged by majestic oaks and a mix of timber, leading to open hay meadows ideal for farming or generating potential income from hay production. Ditches weave between the fields to aid in water drainage. It's common to spot deer grazing in these open spaces. The Mississippi River provides excellent fishing opportunities in the spring and summer. It also provides the opportunity for recreational activities. The serenity by the river might just be what you are looking for! Several spots on the property are perfect for establishing food plots, and you will find deer rubs scattered throughout. The state land borders the southern edge of the property, and Aitkin County borders the southwestern edge of the property, ensuring that outdoor enthusiasts have ample opportunities for hunting deer, bear, turkey, grouse, and waterfowl—a true paradise for outdoor lovers. This property offers many possibilities. You can easily navigate the spacious acreage with an ATV, making exploration convenient. Additionally, a small Aitkin County airport is adjacent to the property with fairly low usage. This property is one you need to see!

Note: The landowner is unsure if the private well is functional.

Additional Details:

| | |
|------------------------|---------|
| Lot Acres | 619.52 |
| Lot Dimensions | 1 |
| School District | 8001 |
| Taxes | \$5,034 |
| Taxes with Assessments | \$5,034 |
| Tax Year | 2024 |

Additional Features:

Driving Directions:

In Aitkin, go east on 169 to the left on 400th Ave. Follow until the road turns to Airpark Drive. Stay straight. Airpark Drive turns into 390th Ave. Follow to the gate on the left.



Listed By:
Whitetail Properties Real Estate

Affinity Real Estate Inc. participates in the Regional Multiple Listing Service of Minnesota, Inc Broker Reciprocity (sm) program, allowing us to display other broker's listings on our website. All properties are subject to prior sale, change or withdrawal.



Call Affinity Real Estate

218-237-3333

info@affinityrealestate.com



Affinity Real Estate - 600 Park Avenue South - Park Rapids MN 56470



website: www.AffinityRealEstate.com | email: info@affinityrealestate.com | office: 218-237-3333 | fax: 218-237-3377



\$1,250,000
MLS 6720992 Lake Land
37791 390th Avenue
Aitkin MN 56431



website: www.AffinityRealEstate.com | email: info@affinityrealestate.com | office: 218-237-3333 | fax: 218-237-3377



\$1,250,000
 MLS 6720992 Lake Land
 37791 390th Avenue
 Aitkin MN 56431



website: www.AffinityRealEstate.com | email: info@affinityrealestate.com | office: 218-237-3333 | fax: 218-237-3377



\$1,250,000
MLS 6720992 Lake Land
37791 390th Avenue
Aitkin MN 56431



website: www.AffinityRealEstate.com | email: info@affinityrealestate.com | office: 218-237-3333 | fax: 218-237-3377



\$1,250,000
 MLS 6720992 Lake Land
 37791 390th Avenue
 Aitkin MN 56431



website: www.AffinityRealEstate.com | email: info@affinityrealestate.com | office: 218-237-3333 | fax: 218-237-3377



\$1,250,000
 MLS 6720992 Lake Land
 37791 390th Avenue
 Aitkin MN 56431



website: www.AffinityRealEstate.com | email: info@affinityrealestate.com | office: 218-237-3333 | fax: 218-237-3377



\$1,250,000
MLS 6720992 Lake Land
37791 390th Avenue
Aitkin MN 56431



website: www.AffinityRealEstate.com | email: info@affinityrealestate.com | office: 218-237-3333 | fax: 218-237-3377



\$1,250,000
MLS 6720992 Lake Land
37791 390th Avenue
Aitkin MN 56431



website: www.AffinityRealEstate.com | email: info@affinityrealestate.com | office: 218-237-3333 | fax: 218-237-3377



\$1,250,000
 MLS 6720992 Lake Land
 37791 390th Avenue
 Aitkin MN 56431



website: www.AffinityRealEstate.com | email: info@affinityrealestate.com | office: 218-237-3333 | fax: 218-237-3377



\$1,250,000
 MLS 6720992 Lake Land
 37791 390th Avenue
 Aitkin MN 56431



website: www.AffinityRealEstate.com | email: info@affinityrealestate.com | office: 218-237-3333 | fax: 218-237-3377



\$1,250,000
 MLS 6720992 Lake Land
 37791 390th Avenue
 Aitkin MN 56431



website: www.AffinityRealEstate.com | email: info@affinityrealestate.com | office: 218-237-3333 | fax: 218-237-3377



\$1,250,000

MLS 6720992 Lake Land
37791 390th Avenue
Aitkin MN 56431



website: www.AffinityRealEstate.com | email: info@affinityrealestate.com | office: 218-237-3333 | fax: 218-237-3377



\$1,250,000
 MLS 6720992 Lake Land
 37791 390th Avenue
 Aitkin MN 56431



website: www.AffinityRealEstate.com | email: info@affinityrealestate.com | office: 218-237-3333 | fax: 218-237-3377



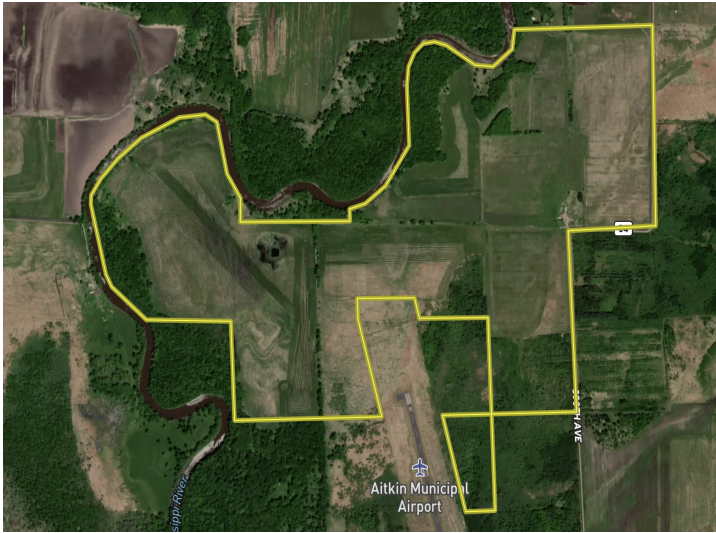
\$1,250,000
 MLS 6720992 Lake Land
 37791 390th Avenue
 Aitkin MN 56431



website: www.AffinityRealEstate.com | email: info@affinityrealestate.com | office: 218-237-3333 | fax: 218-237-3377



\$1,250,000
 MLS 6720992 Lake Land
 37791 390th Avenue
 Aitkin MN 56431



website: www.AffinityRealEstate.com | email: info@affinityrealestate.com | office: 218-237-3333 | fax: 218-237-3377



\$1,250,000

MLS 6720992 Lake Land
37791 390th Avenue
Aitkin MN 56431