



MLS 6721111 Lake Home

\$389,900

2,700 sq ft
2 bedrooms
2 baths

27382 Greenwood Isle Circle
Deerwood MN 56444

Waterfront: Turtle

Status: Active

Description:

Nestled on over an acre of land, this property offers the perfect combination of privacy, tranquility, and breathtaking lake views. With a gentle slope to the water, lake access is easy and enjoyable for all ages. Turtle Lake is connected to Partridge lake via a channel for a total of 295 acres to explore!! Inside the main home, you'll find 1BR/1BA, a beautiful center island kitchen, granite countertops, in floor heat and durable vinyl plank flooring throughout. The spacious living room is perfect for relaxing or entertaining, and the large bonus area/Rec Room above the garage provides flexible space for entertaining or additional sleeping quarters. Step outside to a lakeside deck that's ideal for morning coffee or sunset views!! Additionally enjoy the charm of a four-season guest cabin right at the water's edge—complete with 1BR/1BA and its own kitchen, living room space, upper level loft, forced air wall furnace and a deck at the waters edge!! Combining both properties there's a total of 2BR/2BA and 2700 square feet. With numerous updates and thoughtful features throughout, this property is truly move-in ready. Additional features include a massive 13' kitchen island with 2 beverage coolers, 7.2 built in surround with 80 inch HD TV, All Furnishings included with the sale, High speed internet, instant recovery water heaters, whole house water filter with softener and reverse osmosis filtration system. Experience lake living at its finest—schedule your private showing today!

Additional Details:

Year Built	2017
Lot Acres	1.03
Lot Dimensions	200x243x150x250
Garage Stalls	4
School District	181
Taxes	\$2,259
Taxes with Assessments	\$2,284
Tax Year	2025

Additional Features:

Fuel: Electric, Propane **Heat:** Ductless Mini-Split, Forced Air, Radiant Floor

Driving Directions:

From Garrison take State Highway 18 West to a right onto County Road 181 and then onto Round Lake Rd to a left onto Greenwood Isle Circle and follow to the right onto the right located at 27382 Greenwood Isle Circle.



Affinity Real Estate Inc. participates in the Regional Multiple Listing Service of Minnesota, Inc Broker Reciprocity (sm) program, allowing us to display other broker's listings on our website. All properties are subject to prior sale, change or withdrawal.



Call Affinity Real Estate

218-237-3333

info@affinityrealestate.com



Affinity Real Estate - 600 Park Avenue South - Park Rapids MN 56470



website: www.AffinityRealEstate.com | email: info@affinityrealestate.com | office: 218-237-3333 | fax: 218-237-3377



\$389,900
 MLS 6721111 Lake Home
 27382 Greenwood Isle Circle
 Deerwood MN 56444



website: www.AffinityRealEstate.com | email: info@affinityrealestate.com | office: 218-237-3333 | fax: 218-237-3377



\$389,900
 MLS 6721111 Lake Home
 27382 Greenwood Isle Circle
 Deerwood MN 56444



website: www.AffinityRealEstate.com | email: info@affinityrealestate.com | office: 218-237-3333 | fax: 218-237-3377

Affinity
REAL ESTATE INC

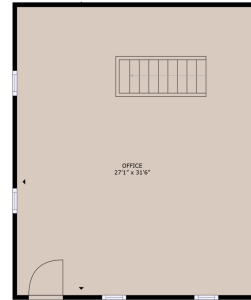
\$389,900

MLS 6721111 Lake Home
27382 Greenwood Isle Circle
Deerwood MN 56444



FLOOR 1

GROSS INTERNAL AREA
FLOOR 1: 1,052 sq. ft. FLOOR 2: 648 sq. ft.
TOTAL: 1,700 sq. ft.
EXCLUDED AREA: GARAGE: 861 sq. ft.
SIZES AND DIMENSIONS ARE APPROXIMATE. ACTUAL MAY VARY.



FLOOR 2

GROSS INTERNAL AREA
FLOOR 1: 1,052 sq. ft. FLOOR 2: 648 sq. ft.
TOTAL: 1,700 sq. ft.
EXCLUDED AREA: GARAGE: 861 sq. ft.
SIZES AND DIMENSIONS ARE APPROXIMATE. ACTUAL MAY VARY.



website: www.AffinityRealEstate.com | email: info@affinityrealestate.com | office: 218-237-3333 | fax: 218-237-3377

Affinity
REAL ESTATE INC

\$389,900

MLS 6721111 Lake Home
27382 Greenwood Isle Circle
Deerwood MN 56444



website: www.AffinityRealEstate.com | email: info@affinityrealestate.com | office: 218-237-3333 | fax: 218-237-3377

Affinity
REAL ESTATE INC

\$389,900
MLS 6721111 Lake Home
27382 Greenwood Isle Circle
Deerwood MN 56444



website: www.AffinityRealEstate.com | email: info@affinityrealestate.com | office: 218-237-3333 | fax: 218-237-3377

Affinity
REAL ESTATE INC

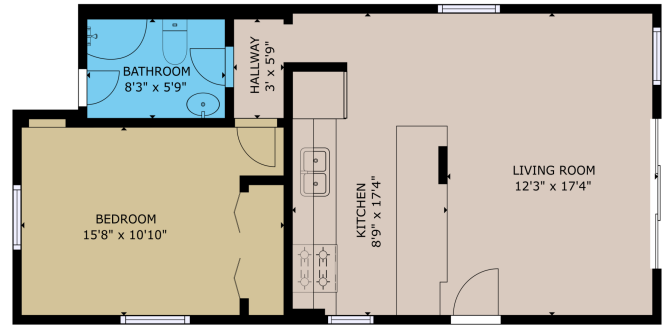
\$389,900
MLS 6721111 Lake Home
27382 Greenwood Isle Circle
Deerwood MN 56444



website: www.AffinityRealEstate.com | email: info@affinityrealestate.com | office: 218-237-3333 | fax: 218-237-3377

Affinity
REAL ESTATE INC

\$389,900
MLS 6721111 Lake Home
27382 Greenwood Isle Circle
Deerwood MN 56444



GROSS INTERNAL AREA
 ROOM 1: 120.413
 ROOM 2: 120.413
 TOTAL: 240.826
 SIZES AND DIMENSIONS ARE APPROXIMATE. ACTUAL MAY VARY.

Matterport



website: www.AffinityRealEstate.com | email: info@affinityrealestate.com | office: 218-237-3333 | fax: 218-237-3377

Affinity
 REAL ESTATE INC

\$389,900
 MLS 6721111 Lake Home
 27382 Greenwood Isle Circle
 Deerwood MN 56444



website: www.AffinityRealEstate.com | email: info@affinityrealestate.com | office: 218-237-3333 | fax: 218-237-3377

Affinity
REAL ESTATE INC

\$389,900
MLS 6721111 Lake Home
27382 Greenwood Isle Circle
Deerwood MN 56444



website: www.AffinityRealEstate.com | email: info@affinityrealestate.com | office: 218-237-3333 | fax:218-237-3377



\$389,900
MLS 6721111 Lake Home
27382 Greenwood Isle Circle
Deerwood MN 56444

website: www.AffinityRealEstate.com | email: info@affinityrealestate.com | office: 218-237-3333 | fax:218-237-3377



\$389,900

MLS 6721111 Lake Home
27382 Greenwood Isle Circle
Deerwood MN 56444