



MLS 6721254 Lake Home

\$379,000

1,436 sq ft
3 bedrooms
2 baths

46568 Poss Beach Road
Pelican Rapids MN 56572

Waterfront: Lizzie Lake

Status: Active

Description:

Lake Lizzie Waterfront Retreat – 60 Feet of Sandy Shoreline!

Experience affordable lakefront living with this rambler style home with a walkout basement. Located on the sought-after shores of Lake Lizzie. Boasting 60 feet of sandy waterfront, this property offers breathtaking views, direct lake access, and endless opportunities for relaxation and recreation.

Step inside the inviting 3-bedroom, 2-bathroom with multiple living areas. This house provides your family with ample space to spread out. The large lakeside deck is perfect for entertaining or enjoying peaceful sunrises over the water. Outside, your private shoreline is ready for adventure—kayaking, fishing, or simply soaking in the beauty of nature. A private dock, mature trees, and a beautifully landscaped yard enhance the outdoor experience. Don't miss this rare opportunity at affordable lake life.

Additional Details:

Year Built	1978
Lot Acres	0.18
Lot Dimensions	60 x 140
Garage Stalls	2
School District	548
Taxes	\$1,976
Taxes with Assessments	\$1,976
Tax Year	2024

Additional Features:

Basement: Walkout **Fuel:** Electric, Propane **Garage:** 2 **Heat:** Forced Air **Sewer:** Shared Septic, Tank with Drainage Field **Water:** Well **Air Conditioning:** Window Unit(s)

Driving Directions:

Take Hwy 59 South of Detroit Lakes, turn left onto 460th street. 460th turn left and becomes Poss Beach Road



Listed By:
HomeSmart Adventure Realty

Affinity Real Estate Inc. participates in the Regional Multiple Listing Service of Minnesota, Inc Broker Reciprocity (sm) program, allowing us to display other broker's listings on our website. All properties are subject to prior sale, change or withdrawal.



Call Affinity Real Estate

218-237-3333

info@affinityrealestate.com



Affinity Real Estate - 600 Park Avenue South - Park Rapids MN 56470



website: www.AffinityRealEstate.com | email: info@affinityrealestate.com | office: 218-237-3333 | fax: 218-237-3377



\$379,000
MLS 6721254 Lake Home
46568 Poss Beach Road
Pelican Rapids MN 56572



website: www.AffinityRealEstate.com | email: info@affinityrealestate.com | office: 218-237-3333 | fax: 218-237-3377

Affinity
REAL ESTATE INC

\$379,000
MLS 6721254 Lake Home
46568 Poss Beach Road
Pelican Rapids MN 56572

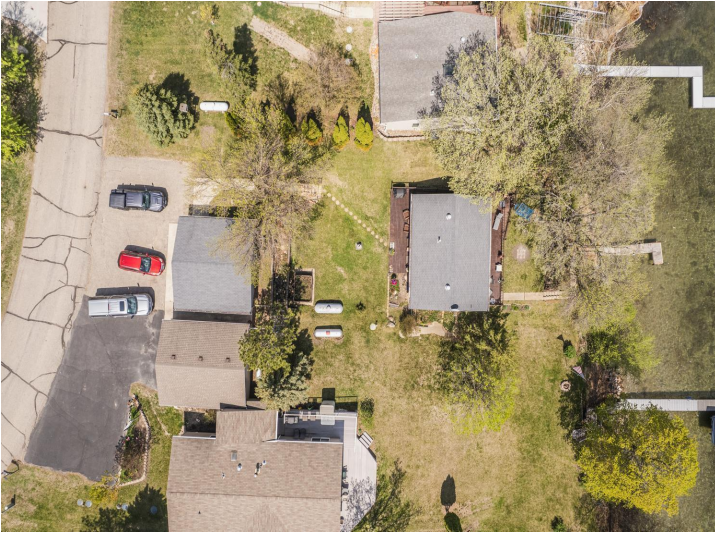


website: www.AffinityRealEstate.com | email: info@affinityrealestate.com | office: 218-237-3333 | fax: 218-237-3377

Affinity
REAL ESTATE INC

\$379,000

MLS 6721254 Lake Home
46568 Poss Beach Road
Pelican Rapids MN 56572



website: www.AffinityRealEstate.com | email: info@affinityrealestate.com | office: 218-237-3333 | fax: 218-237-3377

Affinity
REAL ESTATE INC

\$379,000

MLS 6721254 Lake Home
46568 Poss Beach Road
Pelican Rapids MN 56572