



MLS 6721286 Lake Land

\$265,000

Description:

McDonald Lake: 2 large lots that provide plenty of privacy with approx. 3.2 acres and 355' of frontage. Frontage has weeds but provides access to an excellent recreational lake. Lot includes a 10x16 storage shed with 4x10 covered deck. Improvements also include well, power to the lot, dock, and lift. These lots are two separate buildable lots. McDonald Lake is 561 acres with a max depth of 33' with water clarity of 13'.

Additional Details:

Lot Acres	3.2
Lot Dimensions	355x260
School District	549
Taxes	\$2,076
Taxes with Assessments	\$2,076
Tax Year	2025

Additional Features:

Driving Directions:

From Dent: West on Hwy #108. North on Engstrom Beach Rd. East on Twin Island Dr to #34343.



Listed By:
Coldwell Banker Preferred Partners

Affinity Real Estate Inc. participates in the Regional Multiple Listing Service of Minnesota, Inc Broker Reciprocity (sm) program, allowing us to display other broker's listings on our website. All properties are subject to prior sale, change or withdrawal.



Call Affinity Real Estate

218-237-3333

info@affinityrealestate.com



Affinity Real Estate - 600 Park Avenue South - Park Rapids MN 56470

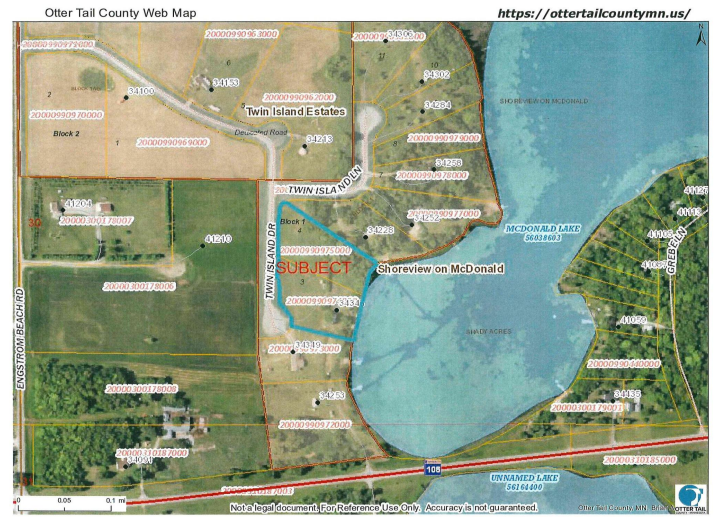


website: www.AffinityRealEstate.com | email: info@affinityrealestate.com | office: 218-237-3333 | fax: 218-237-3377



\$265,000

MLS 6721286 Lake Land
34343 Twin Island Drive
Dent MN 56528



website: www.AffinityRealEstate.com | email: info@affinityrealestate.com | office: 218-237-3333 | fax: 218-237-3377



\$265,000
 MLS 6721286 Lake Land
 34343 Twin Island Drive
 Dent MN 56528