



MLS 6721567 Residential

\$295,500

2,604 sq ft
4 bedrooms
2 baths

332 Hazel Avenue
Pillager MN 56473

Status: Active

Description:

Welcome to this 4-bedroom, 2-bath home perfectly situated just minutes from Pillager School—Step inside to find a bright, open vaulted area. The main level features a cozy living room, a functional kitchen and a dining area that opens onto the large back deck—perfect for entertaining or simply enjoying your morning coffee. Downstairs, you'll find a massive family room, offering flexibility for guests, home offices, or hobbies. Additionally, there are two bedrooms, a bath and a storage area.

The backyard boasts a swimming pool (can be removed if buyer prefers), and a patio area for campfires. The deck overlooks the yard, making it an ideal spot for barbecues, relaxing evenings, or watching kids and pets play.

Additional Details:

Year Built	2006
Lot Acres	0.21
Lot Dimensions	75x122
Garage Stalls	1
School District	116
Taxes	\$3,006
Taxes with Assessments	\$3,006
Tax Year	2024

Additional Features:

Basement: Full **Fuel:** Propane **Garage:** 1 **Heat:** Forced Air **Sewer:** City Sewer/Connected **Water:** City Water/Connected **Air Conditioning:** Central Air

Driving Directions:

From Pillager on River Street, go west on Hazel Ave. House is on second block on Left (south).



Listed By:
Century 21 Brainerd Realty

Affinity Real Estate Inc. participates in the Regional Multiple Listing Service of Minnesota, Inc Broker Reciprocity (sm) program, allowing us to display other broker's listings on our website. All properties are subject to prior sale, change or withdrawal.



Call Affinity Real Estate

218-237-3333

info@affinityrealestate.com



Affinity Real Estate - 600 Park Avenue South - Park Rapids MN 56470



website: www.AffinityRealEstate.com | email: info@affinityrealestate.com | office: 218-237-3333 | fax: 218-237-3377

Affinity
REAL ESTATE INC

\$295,500
MLS 6721567 Residential
332 Hazel Avenue
Pillager MN 56473



website: www.AffinityRealEstate.com | email: info@affinityrealestate.com | office: 218-237-3333 | fax: 218-237-3377

Affinity
REAL ESTATE INC

\$295,500
MLS 6721567 Residential
332 Hazel Avenue
Pillager MN 56473



website: www.AffinityRealEstate.com | email: info@affinityrealestate.com | office: 218-237-3333 | fax: 218-237-3377



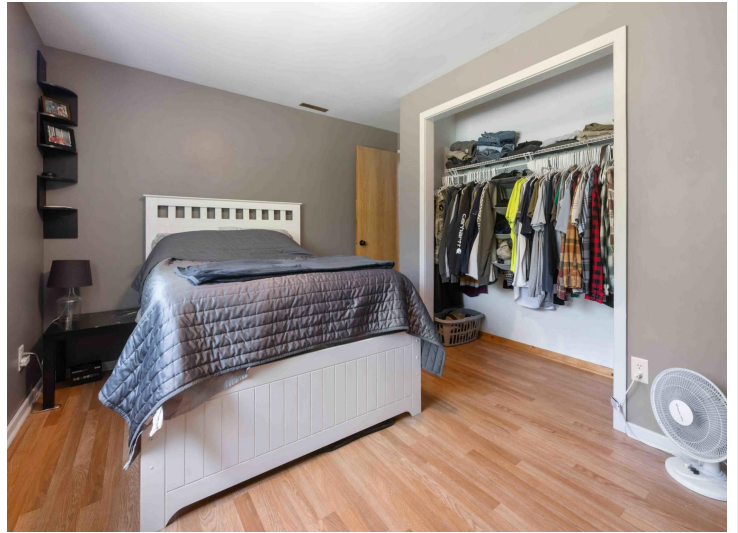
\$295,500
MLS 6721567 Residential
332 Hazel Avenue
Pillager MN 56473



website: www.AffinityRealEstate.com | email: info@affinityrealestate.com | office: 218-237-3333 | fax: 218-237-3377

Affinity
REAL ESTATE INC

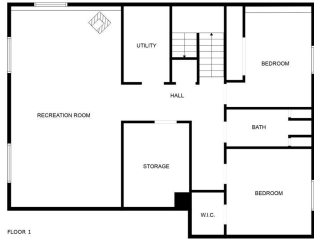
\$295,500
MLS 6721567 Residential
332 Hazel Avenue
Pillager MN 56473



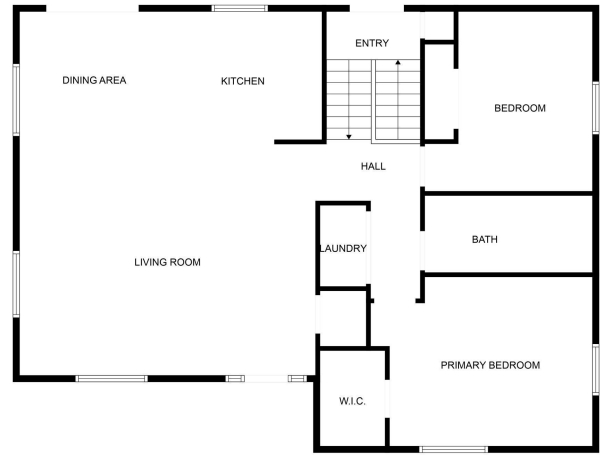
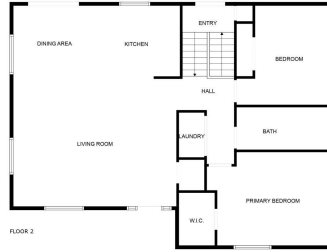
website: www.AffinityRealEstate.com | email: info@affinityrealestate.com | office: 218-237-3333 | fax: 218-237-3377



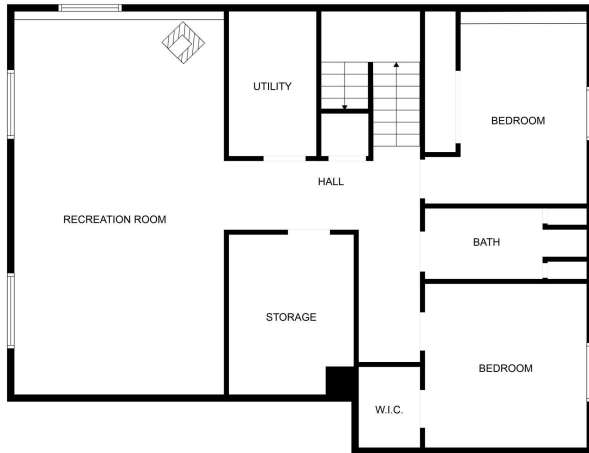
\$295,500
MLS 6721567 Residential
332 Hazel Avenue
Pillager MN 56473



FLOOR PLAN CREATED BY CUBICASA API. MEASUREMENTS DEEMED HIGHLY RELIABLE BUT NOT GUARANTEED.



FLOOR PLAN CREATED BY CUBICASA API. MEASUREMENTS DEEMED HIGHLY RELIABLE BUT NOT GUARANTEED.



FLOOR PLAN CREATED BY CUBICASA API. MEASUREMENTS DEEMED HIGHLY RELIABLE BUT NOT GUARANTEED.

website: www.AffinityRealEstate.com | email: info@affinityrealestate.com | office: 218-237-3333 | fax: 218-237-3377



\$295,500
 MLS 6721567 Residential
 332 Hazel Avenue
 Pillager MN 56473