



MLS 6721570 Land

\$269,000

50.02 Acres
Raw Land

3373 County Road 45
Brainerd MN 56401

Status: Active

Description:

House, Cabin or Bardominium would be perfect for this Stunning 50-Acre Property in Crow Wing County. Situated on a paved road with essential utilities already in place—septic, electric, and water—this beautiful parcel offers both convenience and serenity. A solid 30' x 50' shed, built just five years ago, features a concrete floor and provides ample space for storage or future plans.

The land is a haven for outdoor enthusiasts, with over 40 acres of mature trees and winding walking trails—perfect for hiking, exploring, or simply enjoying the quiet. Known for excellent hunting, this property is ideal as a weekend retreat or a full-time residence.

Whether you want to use it as-is, build your dream home, this acreage invites you to bring your vision to life. Come walk the land, breathe in the peace, and discover the full potential waiting here.

Additional Details:

Lot Acres	50.02
Lot Dimensions	1304 x 334 x 1306 x 1330
School District	181
Taxes	(unreported)
Taxes with Assessments	(unreported)
Tax Year	2024

Additional Features:

Driving Directions:

From Brainerd, South on Co. Rd 45 to property on Right



Listed By:
eXp Realty

Affinity Real Estate Inc. participates in the Regional Multiple Listing Service of Minnesota, Inc Broker Reciprocity (sm) program, allowing us to display other broker's listings on our website. All properties are subject to prior sale, change or withdrawal.



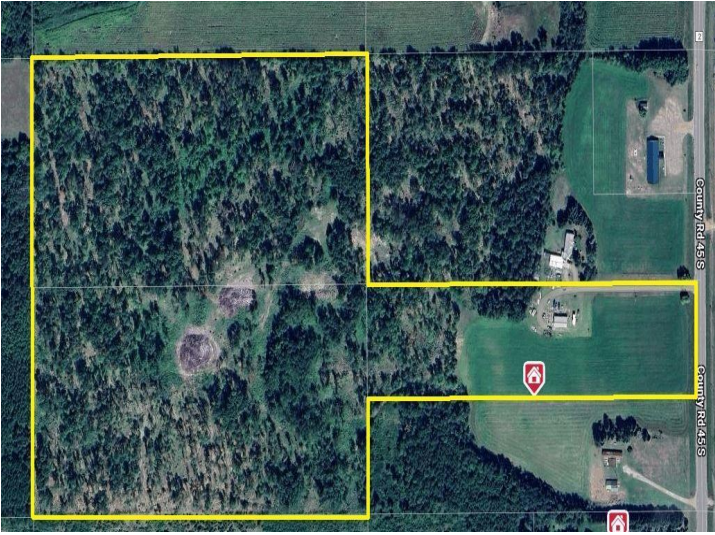
Call Affinity Real Estate

218-237-3333

info@affinityrealestate.com



Affinity Real Estate - 600 Park Avenue South - Park Rapids MN 56470



website: www.AffinityRealEstate.com | email: info@affinityrealestate.com | office: 218-237-3333 | fax: 218-237-3377



\$269,000
 MLS 6721570 Land
 3373 County Road 45
 Brainerd MN 56401



website: www.AffinityRealEstate.com | email: info@affinityrealestate.com | office: 218-237-3333 | fax: 218-237-3377



\$269,000
MLS 6721570 Land
3373 County Road 45
Brainerd MN 56401