



MLS 6721770 Residential

\$215,000

1,320 sq ft
2 bedrooms
2 baths

1117 Patricia Lane
Bagley MN 56621

Status: Active

Description:

Spacious One-Level Home with Expansive Garages and Flex Space – Near Bagley City Park and Lake Lamond

This thoughtfully designed one-level home offers comfort and function. Featuring 2 bedrooms and 2 bathrooms, the open-concept layout creates a welcoming atmosphere with a seamless flow between the kitchen, dining, and living areas—ideal for gathering or relaxing.

Just off the main living area, a double attached garage provides convenience year-round. Behind the garage, a large 24x13 flex room offers endless possibilities—perfect for a rec room, workshop, gym, or creative space. For additional storage or workspace, the property includes a 24x50 detached garage, ideal for hobbies, recreational vehicles, or equipment.

Located close to Bagley City Park and scenic Lake Lamond, outdoor adventures and community amenities are just moments away.

Explore the potential and flexibility this home has to offer!

Additional Details:

Year Built	2001
Lot Acres	0.36
Lot Dimensions	92x180
Garage Stalls	6
School District	162
Taxes	\$2,314
Taxes with Assessments	\$2,314
Tax Year	2025

Additional Features:

Basement: Crawl Space **Fuel:** Natural Gas **Garage:** 6 **Heat:** Forced Air **Sewer:** City Sewer/Connected **Water:** City Water/Connected **Air Conditioning:** Central Air

Driving Directions:

North on 92, Left on Jodell St, R on Patricia Lane



Listed By:
Real Broker, LLC

Affinity Real Estate Inc. participates in the Regional Multiple Listing Service of Minnesota, Inc Broker Reciprocity (sm) program, allowing us to display other broker's listings on our website. All properties are subject to prior sale, change or withdrawal.



Call Affinity Real Estate

218-237-3333

info@affinityrealestate.com



Affinity Real Estate - 600 Park Avenue South - Park Rapids MN 56470



website: www.AffinityRealEstate.com | email: info@affinityrealestate.com | office: 218-237-3333 | fax: 218-237-3377



\$215,000
MLS 6721770 Residential
1117 Patricia Lane
Bagley MN 56621



website: www.AffinityRealEstate.com | email: info@affinityrealestate.com | office: 218-237-3333 | fax: 218-237-3377



\$215,000
MLS 6721770 Residential
1117 Patricia Lane
Bagley MN 56621



website: www.AffinityRealEstate.com | email: info@affinityrealestate.com | office: 218-237-3333 | fax: 218-237-3377

Affinity
REAL ESTATE INC

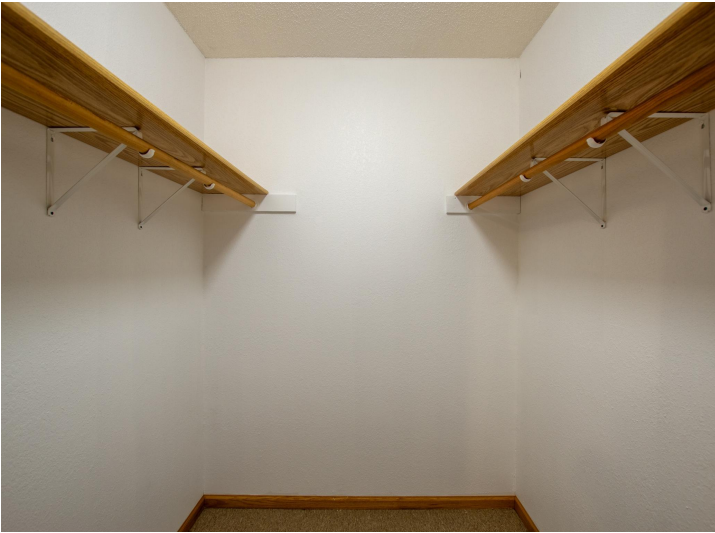
\$215,000
MLS 6721770 Residential
1117 Patricia Lane
Bagley MN 56621



website: www.AffinityRealEstate.com | email: info@affinityrealestate.com | office: 218-237-3333 | fax: 218-237-3377



\$215,000
MLS 6721770 Residential
1117 Patricia Lane
Bagley MN 56621



website: www.AffinityRealEstate.com | email: info@affinityrealestate.com | office: 218-237-3333 | fax: 218-237-3377



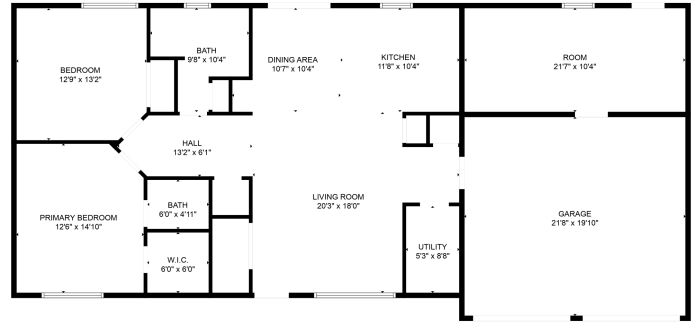
\$215,000
 MLS 6721770 Residential
 1117 Patricia Lane
 Bagley MN 56621



website: www.AffinityRealEstate.com | email: info@affinityrealestate.com | office: 218-237-3333 | fax: 218-237-3377



\$215,000
 MLS 6721770 Residential
 1117 Patricia Lane
 Bagley MN 56621



FLOOR PLAN CREATED BY CURBICASA APP. MEASUREMENTS DEEMED HIGHLY RELIABLE BUT NOT GUARANTEED.



website: www.AffinityRealEstate.com | email: info@affinityrealestate.com | office: 218-237-3333 | fax: 218-237-3377

Affinity
REAL ESTATE INC

\$215,000
MLS 6721770 Residential
1117 Patricia Lane
Bagley MN 56621