

MLS 6722131 Land

\$199,900

57.18 Acres
Raw Land

5650 25th Avenue
Pequot Lakes MN 56472

Status: Active

Description:

57 Acres - 7 mins to Sibley Lake - 15 mins to Upper Gull - 15 mins to Berth Lake on WFC. Outdoor enthusiasts, hunters & nature lovers: welcome to your dream retreat, build your home or setup your hunting camp! Enjoy miles of cleared trails, cleared basecamp/build site, outhouse w/ septic holding tanks & electric at road. This stunning 57-acre property offers diverse terrain, endless hunting opportunities & modern conveniences just 15 mins NW of Nisswa & 7 mins W of Pequot Lakes. Create lasting memories & thrilling hunts at this extraordinary hunting haven or Build your dream home!

Additional Details:

Lot Acres	57.18
Lot Dimensions	Irregular
School District	1065
Taxes	\$710
Taxes with Assessments	\$710
Tax Year	2025

Additional Features:

Driving Directions:

From Pequot, Head North on Patriot Avenue, Turn Left on Cty Rd 17 SW. Follow for appx 5 miles, sign on the left.



Listed By:
eXp Realty

Affinity Real Estate Inc. participates in the Regional Multiple Listing Service of Minnesota, Inc Broker Reciprocity (sm) program, allowing us to display other broker's listings on our website. All properties are subject to prior sale, change or withdrawal.



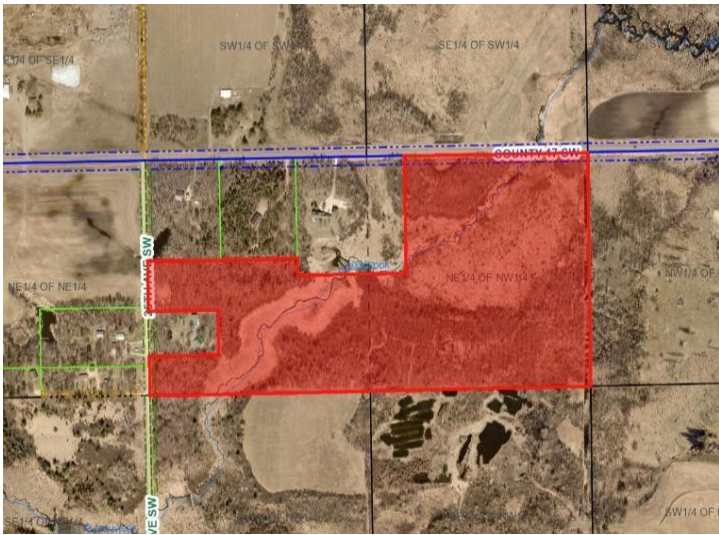
Call Affinity Real Estate

218-237-3333

info@affinityrealestate.com



Affinity Real Estate - 600 Park Avenue South - Park Rapids MN 56470



website: www.AffinityRealEstate.com | email: info@affinityrealestate.com | office: 218-237-3333 | fax: 218-237-3377



\$199,900
MLS 6722131 Land
5650 25th Avenue
Pequot Lakes MN 56472



website: www.AffinityRealEstate.com | email: info@affinityrealestate.com | office: 218-237-3333 | fax:218-237-3377



\$199,900
MLS 6722131 Land
5650 25th Avenue
Pequot Lakes MN 56472



website: www.AffinityRealEstate.com | email: info@affinityrealestate.com | office: 218-237-3333 | fax:218-237-3377



\$199,900
MLS 6722131 Land
5650 25th Avenue
Pequot Lakes MN 56472



website: www.AffinityRealEstate.com | email: info@affinityrealestate.com | office: 218-237-3333 | fax: 218-237-3377

Affinity
REAL ESTATE INC

\$199,900
MLS 6722131 Land
5650 25th Avenue
Pequot Lakes MN 56472



website: www.AffinityRealEstate.com | email: info@affinityrealestate.com | office: 218-237-3333 | fax:218-237-3377



\$199,900
MLS 6722131 Land
5650 25th Avenue
Pequot Lakes MN 56472



website: www.AffinityRealEstate.com | email: info@affinityrealestate.com | office: 218-237-3333 | fax:218-237-3377



\$199,900
MLS 6722131 Land
5650 25th Avenue
Pequot Lakes MN 56472



website: www.AffinityRealEstate.com | email: info@affinityrealestate.com | office: 218-237-3333 | fax:218-237-3377



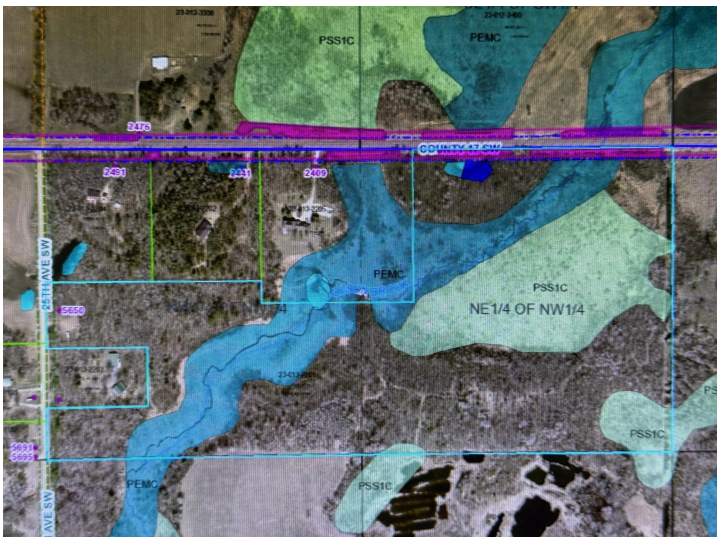
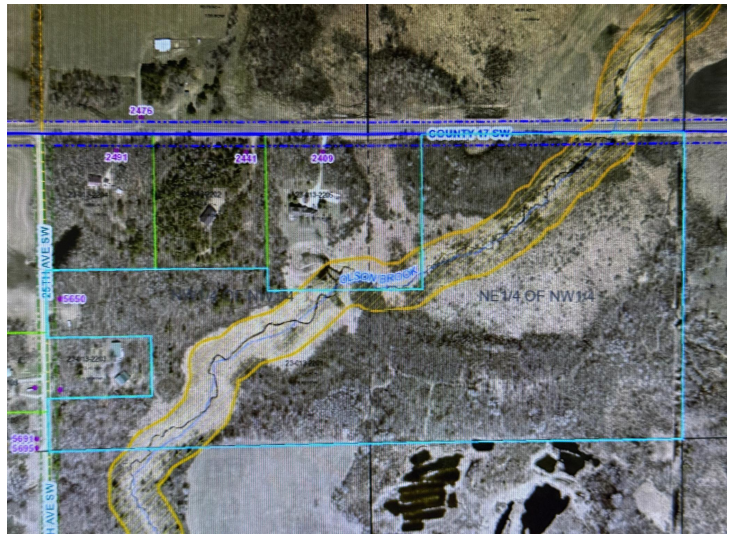
\$199,900
MLS 6722131 Land
5650 25th Avenue
Pequot Lakes MN 56472



website: www.AffinityRealEstate.com | email: info@affinityrealestate.com | office: 218-237-3333 | fax:218-237-3377



\$199,900
MLS 6722131 Land
5650 25th Avenue
Pequot Lakes MN 56472



website: www.AffinityRealEstate.com | email: info@affinityrealestate.com | office: 218-237-3333 | fax: 218-237-3377



\$199,900
MLS 6722131 Land
5650 25th Avenue
Pequot Lakes MN 56472