



MLS 6722228 Land

**\$395,000**

139 Acres  
Raw Land

26062 350th Street  
Sebeka MN 56477

Status: Active

#### Description:

If you love hunting and the outdoors, this property will NOT disappoint you! Loaded with deer, bear, turkeys, grouse, and bobcats, you can hunt and trap all fall, hunt turkeys in the spring and score 5 different species or more! There is a wide variety of pine/spruce trees and hardwoods as well. The property is currently under a Forestry Management program that not only produces a good income, but also offers a property tax break. There are 10+ deer stands throughout the property which offers an opportunity to accommodate a large group of hunters. Part of the property adjoins the Huntersville State Forest and The Conservation Fund (Formerly Potlatch) land. Just 6 miles to Huntersville (Outpost) and 8 miles to Nimrod. There is a 14x70 mobile home on the property and a storage shed. Full 100 amp electric service. No well on the property, but there is a compliant septic tank. This is a turn-key hunting property! Agent is an owner.

#### Additional Details:

Lot Acres	139
Lot Dimensions	1320 x 5280
School District	821
Taxes	\$1,958
Taxes with Assessments	\$1,958
Tax Year	2025

#### Additional Features:

#### Driving Directions:

From Huntersville, go east on 18 (Huntersville Rd.) for 5 miles. Go left (east) on 350th St. 1 mile to sign on left. From Nimrod take 18 north out of town for .6 of a mile to Huntersville Rd. Turn left on 18 and go 6.6 miles to 350th St., turn right for 1 mile to sign on left.



Listed By:  
Counselor Realty Detroit Lakes

Affinity Real Estate Inc. participates in the Regional Multiple Listing Service of Minnesota, Inc Broker Reciprocity (sm) program, allowing us to display other broker's listings on our website. All properties are subject to prior sale, change or withdrawal.



Call Affinity Real Estate

**218-237-3333**

[info@affinityrealestate.com](mailto:info@affinityrealestate.com)



Affinity Real Estate - 600 Park Avenue South - Park Rapids MN 56470



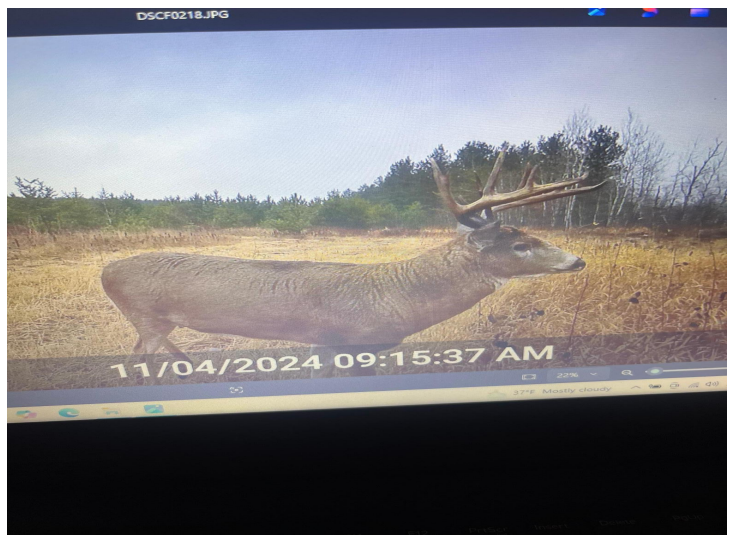
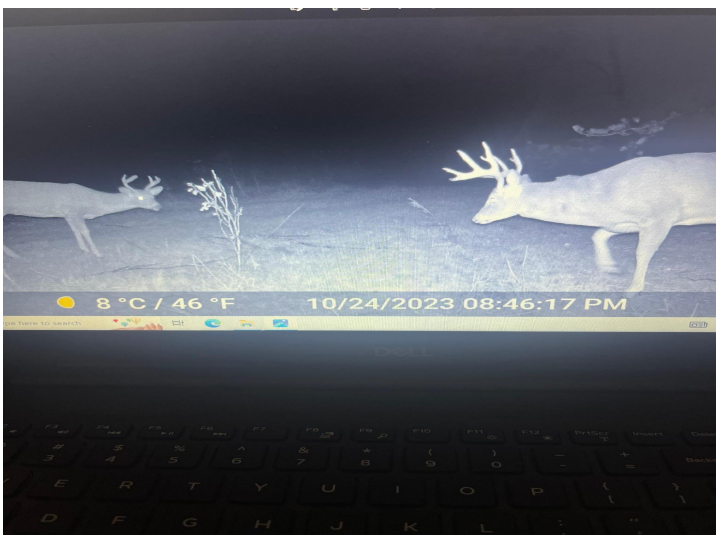


website: [www.AffinityRealEstate.com](http://www.AffinityRealEstate.com) | email: [info@affinityrealestate.com](mailto:info@affinityrealestate.com) | office: 218-237-3333 | fax: 218-237-3377



**\$395,000**  
 MLS 6722228 Land  
 26062 350th Street  
 Sebeka MN 56477



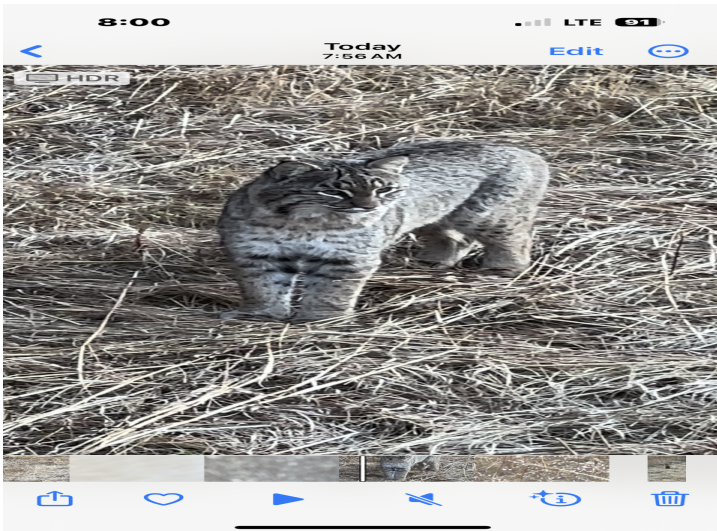
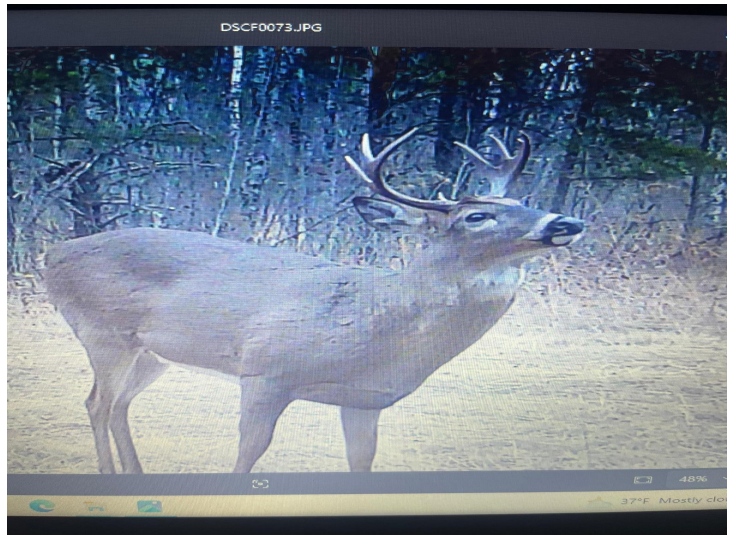
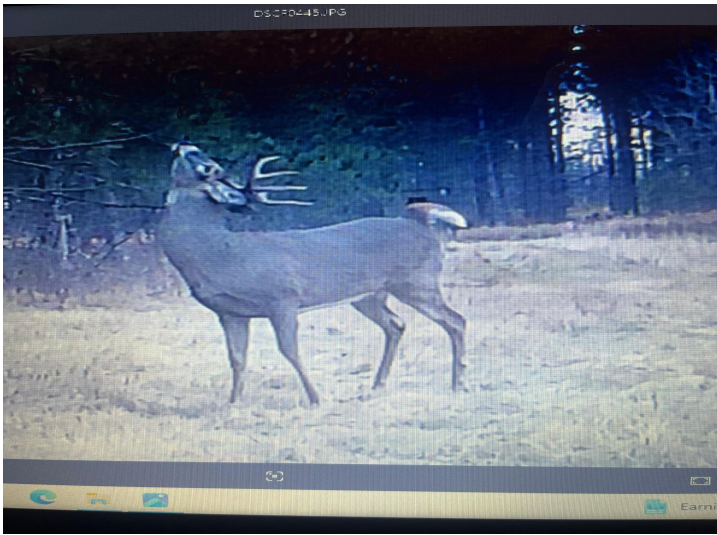


website: [www.AffinityRealEstate.com](http://www.AffinityRealEstate.com) | email: [info@affinityrealestate.com](mailto:info@affinityrealestate.com) | office: 218-237-3333 | fax: 218-237-3377



**\$395,000**  
 MLS 6722228 Land  
 26062 350th Street  
 Sebeka MN 56477



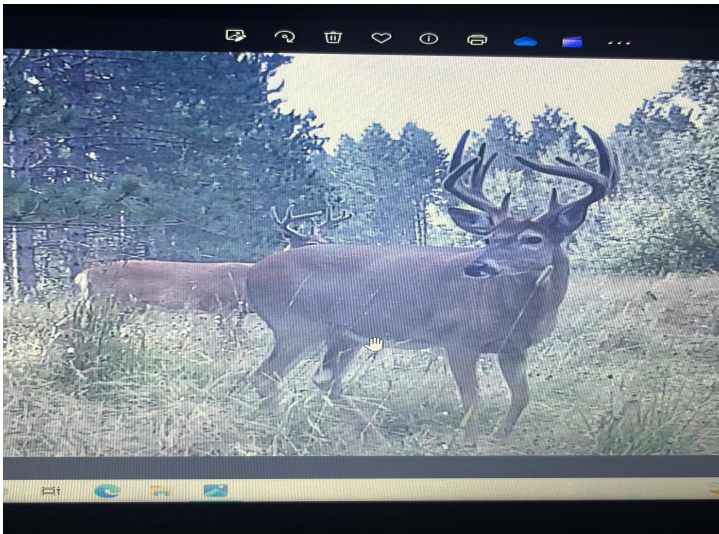


website: [www.AffinityRealEstate.com](http://www.AffinityRealEstate.com) | email: [info@affinityrealestate.com](mailto:info@affinityrealestate.com) | office: 218-237-3333 | fax: 218-237-3377



**\$395,000**  
 MLS 6722228 Land  
 26062 350th Street  
 Sebeka MN 56477





website: [www.AffinityRealEstate.com](http://www.AffinityRealEstate.com) | email: [info@affinityrealestate.com](mailto:info@affinityrealestate.com) | office: 218-237-3333 | fax:218-237-3377



**\$395,000**  
MLS 6722228 Land  
26062 350th Street  
Sebeka MN 56477



website: [www.AffinityRealEstate.com](http://www.AffinityRealEstate.com) | email: [info@affinityrealestate.com](mailto:info@affinityrealestate.com) | office: 218-237-3333 | fax:218-237-3377



**\$395,000**

MLS 6722228 Land  
26062 350th Street  
Sebeka MN 56477



website: [www.AffinityRealEstate.com](http://www.AffinityRealEstate.com) | email: [info@affinityrealestate.com](mailto:info@affinityrealestate.com) | office: 218-237-3333 | fax:218-237-3377



**\$395,000**

MLS 6722228 Land  
26062 350th Street  
Sebeka MN 56477