

MLS 6722489 Land

\$75,900

1.9 Acres
Raw Land

TBDXXX Melody Rd
Grand Rapids MN 55744

Status: Active

Description:

Looking for the perfect spot to build your dream home or cabin? This property is ready for your vision to come to life. Located just a short distance from town and across the road from beautiful Pokegama Lake, you'll enjoy easy access to both nature and amenities. The lot features a paved tar road, making it convenient year-round, and boasts a mix of beautiful wooded areas with multiple potential building sites. With public utilities available, you'll have everything you need to get started. Whether you're looking for a peaceful retreat or a permanent residence, this land offers the perfect canvas for your dream home. Don't miss out on this amazing opportunity—schedule a visit today! Additional adjoining land available MLS#6639776

Additional Details:

Lot Acres	1.9
Lot Dimensions	200x400
School District	318
Taxes	\$202
Taxes with Assessments	\$202
Tax Year	2025

Additional Features:

Driving Directions:

169 s to woodland heights rd to melody rd



Listed By:
EDGE OF THE WILDERNESS REALTY

Affinity Real Estate Inc. participates in the Regional Multiple Listing Service of Minnesota, Inc Broker Reciprocity (sm) program, allowing us to display other broker's listings on our website. All properties are subject to prior sale, change or withdrawal.



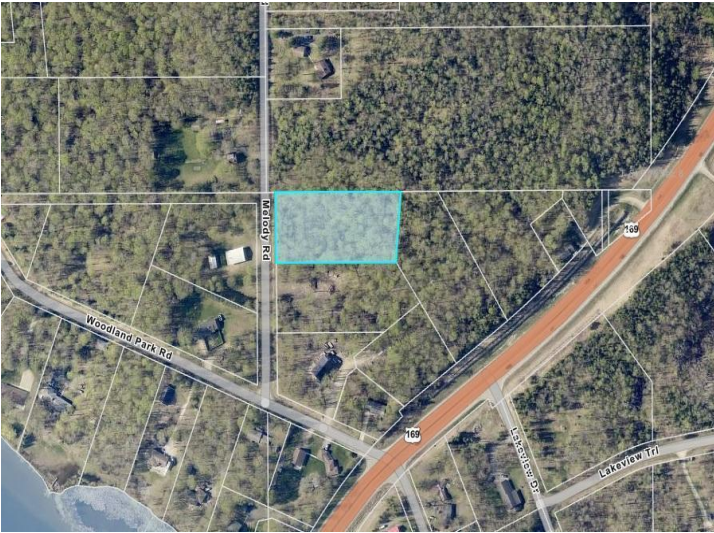
Call Affinity Real Estate

218-237-3333

info@affinityrealestate.com



Affinity Real Estate - 600 Park Avenue South - Park Rapids MN 56470



website: www.AffinityRealEstate.com | email: info@affinityrealestate.com | office: 218-237-3333 | fax:218-237-3377



\$75,900
MLS 6722489 Land
TBDXXX Melody Rd
Grand Rapids MN 55744