



MLS 6722565 Lake Land

**\$150,000**

**Description:**

Discover 1.6 acres of serene, wooded land with no builder restrictions, perfect for your dream home. Utilities including natural gas, city sewer, and electric are conveniently available at Maplewood Drive. Enjoy deeded access to beautiful Dade Lake and proximity to the renowned Maddens Classic Golf Course. Bring your vision to life in this idyllic setting!

**Additional Details:**

Lot Acres	1.63
Lot Dimensions	141x489x143x20x473
School District	181
Taxes	\$372
Taxes with Assessments	\$372
Tax Year	2025

**Additional Features:**

**Driving Directions:**

From Hwy 210, North on County 18 SW, Left on Maplewood Drive to property.



Listed By:  
Keller Williams Integrity NW

Affinity Real Estate Inc. participates in the Regional Multiple Listing Service of Minnesota, Inc Broker Reciprocity (sm) program, allowing us to display other broker's listings on our website. All properties are subject to prior sale, change or withdrawal.



**Call Affinity Real Estate**

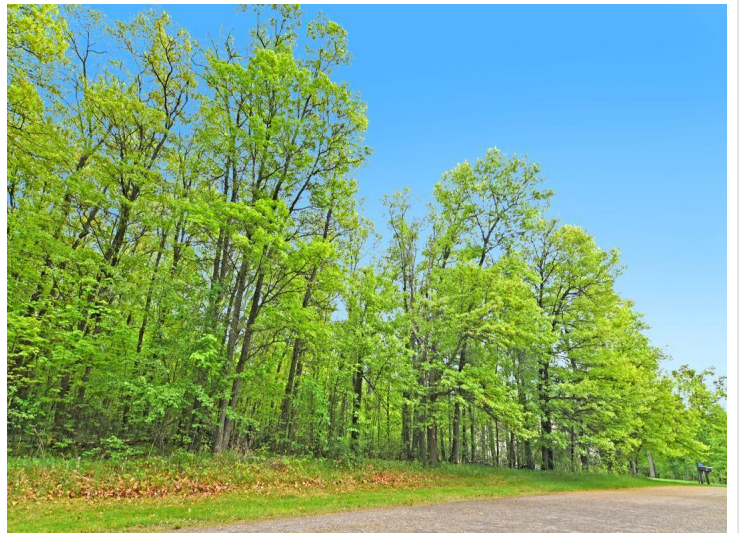
**218-237-3333**

**info@affinityrealestate.com**



**Affinity Real Estate - 600 Park Avenue South - Park Rapids MN 56470**



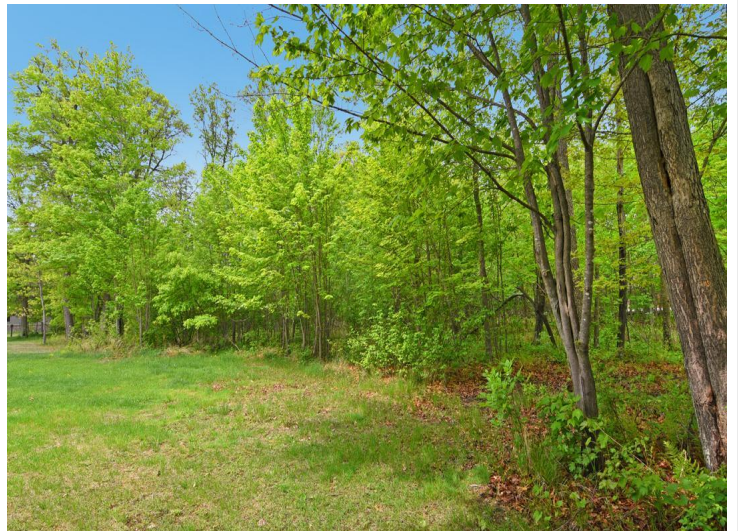
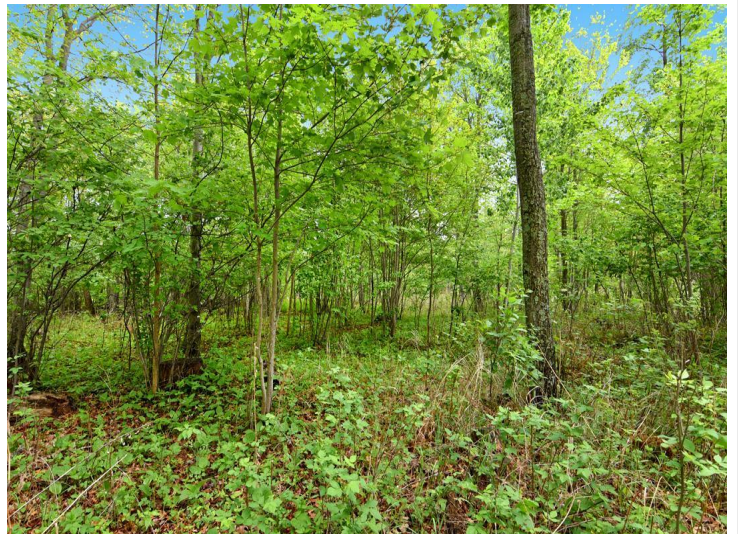
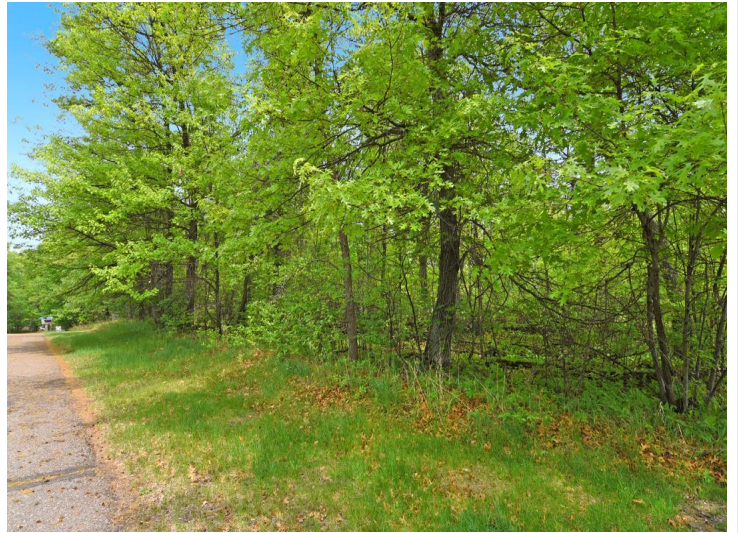


website: [www.AffinityRealEstate.com](http://www.AffinityRealEstate.com) | email: [info@affinityrealestate.com](mailto:info@affinityrealestate.com) | office: 218-237-3333 | fax: 218-237-3377



**\$150,000**  
 MLS 6722565 Lake Land  
 XXX Maplewood Drive  
 East Gull Lake MN 56401





website: [www.AffinityRealEstate.com](http://www.AffinityRealEstate.com) | email: [info@affinityrealestate.com](mailto:info@affinityrealestate.com) | office: 218-237-3333 | fax: 218-237-3377



**\$150,000**

MLS 6722565 Lake Land  
XXX Maplewood Drive  
East Gull Lake MN 56401





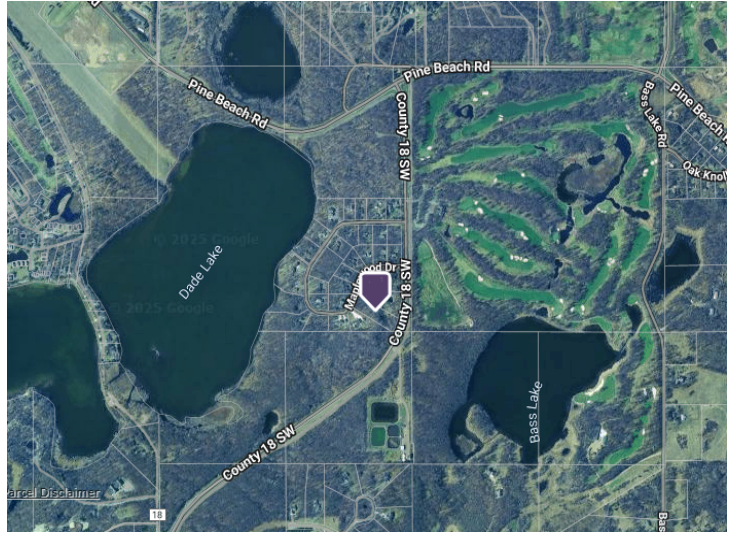
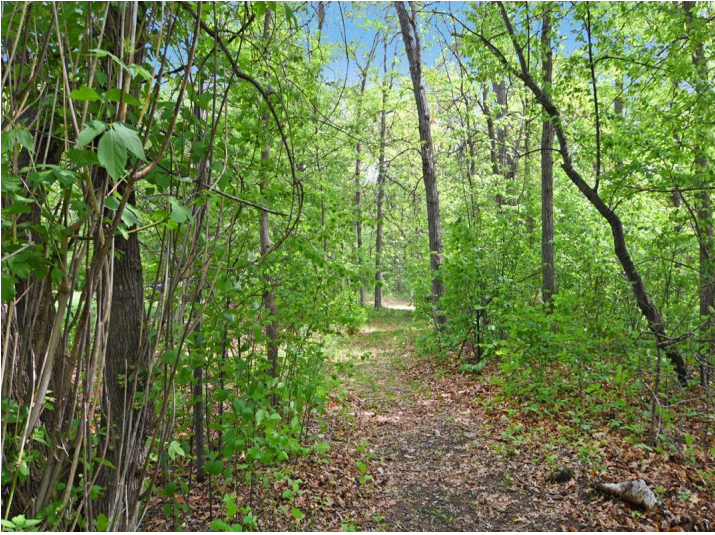
website: [www.AffinityRealEstate.com](http://www.AffinityRealEstate.com) | email: [info@affinityrealestate.com](mailto:info@affinityrealestate.com) | office: 218-237-3333 | fax: 218-237-3377



**\$150,000**

MLS 6722565 Lake Land  
XXX Maplewood Drive  
East Gull Lake MN 56401





website: [www.AffinityRealEstate.com](http://www.AffinityRealEstate.com) | email: [info@affinityrealestate.com](mailto:info@affinityrealestate.com) | office: 218-237-3333 | fax: 218-237-3377



**\$150,000**  
 MLS 6722565 Lake Land  
 XXX Maplewood Drive  
 East Gull Lake MN 56401