



MLS 6722596 Residential

\$449,900

1,430 sq ft
3 bedrooms
2 baths

xxx Crust Road
Brainerd MN 56401

Status: Active

Description:

Situated on 23.44 acres, this thoughtfully designed 3-bedroom, 2-bathroom home features true one-level living with no internal or external stairs-ideal for ease and accessibility. The open-concept layout showcases beautiful granite countertops throughout and a spacious kitchen with stainless steel appliances. A 2-stall attached garage provides plenty of storage and function. Great wooded lot with tons of deer sign and duck ponds great for hunting! Enjoy the privacy of a large acreage setting while still being close to town for shopping, dining, and all of the essentials!

Additional Details:

Year Built	2025
Lot Acres	23.44
Lot Dimensions	768x1324x768x1324
Garage Stalls	2
School District	896
Taxes	\$254
Taxes with Assessments	\$254
Tax Year	2024

Additional Features:

Fuel: Array **Heat:** Forced Air

Driving Directions:

Head east on County Road 18, turn right onto County Rd 23, turn left onto County Road 24, turn right on Leisure Lane, turn left left on Crust Road, property is on the left



Listed By:
Counselor Realty Brainerd Lakes

Affinity Real Estate Inc. participates in the Regional Multiple Listing Service of Minnesota, Inc Broker Reciprocity (sm) program, allowing us to display other broker's listings on our website. All properties are subject to prior sale, change or withdrawal.



Call Affinity Real Estate

218-237-3333

info@affinityrealestate.com



Affinity Real Estate - 600 Park Avenue South - Park Rapids MN 56470



website: www.AffinityRealEstate.com | email: info@affinityrealestate.com | office: 218-237-3333 | fax:218-237-3377

Affinity
REAL ESTATE INC

\$449,900
MLS 6722596 Residential
xxx Crust Road
Brainerd MN 56401



website: www.AffinityRealEstate.com | email: info@affinityrealestate.com | office: 218-237-3333 | fax:218-237-3377

Affinity
REAL ESTATE INC

\$449,900
MLS 6722596 Residential
xxx Crust Road
Brainerd MN 56401



website: www.AffinityRealEstate.com | email: info@affinityrealestate.com | office: 218-237-3333 | fax:218-237-3377

Affinity
REAL ESTATE INC

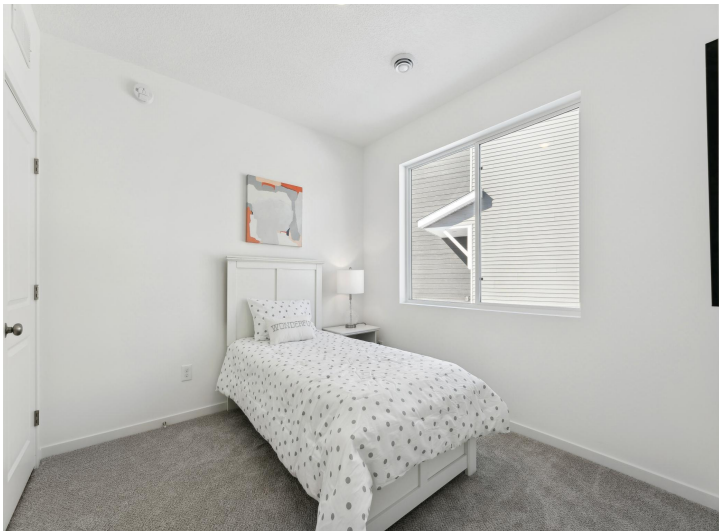
\$449,900
MLS 6722596 Residential
xxx Crust Road
Brainerd MN 56401



website: www.AffinityRealEstate.com | email: info@affinityrealestate.com | office: 218-237-3333 | fax:218-237-3377



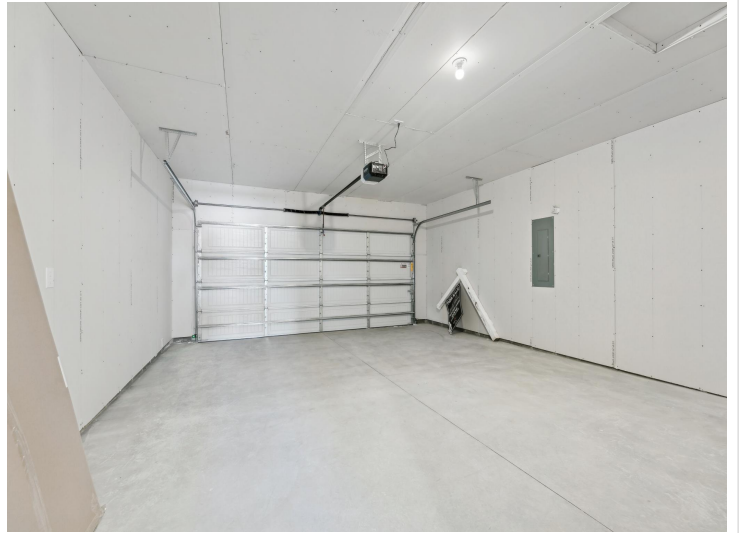
\$449,900
MLS 6722596 Residential
xxx Crust Road
Brainerd MN 56401



website: www.AffinityRealEstate.com | email: info@affinityrealestate.com | office: 218-237-3333 | fax:218-237-3377



\$449,900
MLS 6722596 Residential
xxx Crust Road
Brainerd MN 56401



website: www.AffinityRealEstate.com | email: info@affinityrealestate.com | office: 218-237-3333 | fax:218-237-3377



\$449,900
MLS 6722596 Residential
xxx Crust Road
Brainerd MN 56401



website: www.AffinityRealEstate.com | email: info@affinityrealestate.com | office: 218-237-3333 | fax:218-237-3377



\$449,900
MLS 6722596 Residential
xxx Crust Road
Brainerd MN 56401



website: www.AffinityRealEstate.com | email: info@affinityrealestate.com | office: 218-237-3333 | fax:218-237-3377



\$449,900
MLS 6722596 Residential
xxx Crust Road
Brainerd MN 56401



website: www.AffinityRealEstate.com | email: info@affinityrealestate.com | office: 218-237-3333 | fax:218-237-3377



\$449,900
MLS 6722596 Residential
xxx Crust Road
Brainerd MN 56401



website: www.AffinityRealEstate.com | email: info@affinityrealestate.com | office: 218-237-3333 | fax:218-237-3377



\$449,900
MLS 6722596 Residential
xxx Crust Road
Brainerd MN 56401



website: www.AffinityRealEstate.com | email: info@affinityrealestate.com | office: 218-237-3333 | fax:218-237-3377



\$449,900
MLS 6722596 Residential
xxx Crust Road
Brainerd MN 56401