



MLS 6722672 Lake Land

\$89,900

Description:

Enjoy a peaceful & private setting on Little Hattie Lake with gradual elevation leading to 172ft of natural frontage. Little Hattie has a channel that also connect to Lake Hattie offering even more opportunities for boating, kayaking, canoeing, and excellent fishing. Build your dream home/cabin or simply bring your RV and start enjoying life at the lake.

Additional Details:

Lot Acres	1.34
Lot Dimensions	172x360x177x372
School District	2174
Taxes	\$178
Taxes with Assessments	\$178
Tax Year	2025

Additional Features:

Driving Directions:

From Backus(Godfrey's) go East on State 87 6.2 miles to right on 20th for 1.5 miles to right on County 118. Continue .3 miles to 361(mapping purposes) and property on left. Subject property is located next to 361.



Listed By:
Rusty's Up North Realty

Affinity Real Estate Inc. participates in the Regional Multiple Listing Service of Minnesota, Inc Broker Reciprocity (sm) program, allowing us to display other broker's listings on our website. All properties are subject to prior sale, change or withdrawal.



Call Affinity Real Estate

218-237-3333

info@affinityrealestate.com



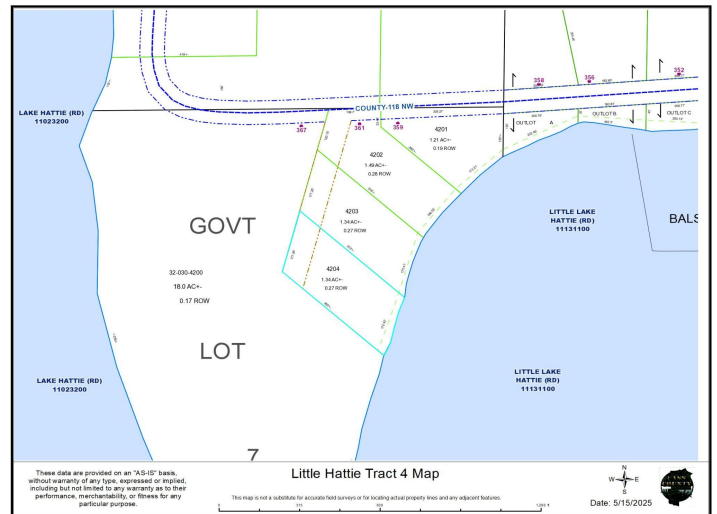
Affinity Real Estate - 600 Park Avenue South - Park Rapids MN 56470



website: www.AffinityRealEstate.com | email: info@affinityrealestate.com | office: 218-237-3333 | fax: 218-237-3377



\$89,900
 MLS 6722672 Lake Land
 TBD County 118 Road
 Backus MN 56435



website: www.AffinityRealEstate.com | email: info@affinityrealestate.com | office: 218-237-3333 | fax: 218-237-3377



\$89,900
MLS 6722672 Lake Land
TBD County 118 Road
Backus MN 56435