



MLS 6722814 Lake Land

\$398,900

Description:

Outdoor Enthusiast's Dream Property – 142 Acres of Prime Hunting Land

Discover 142 acres of premium hunting and recreational land, featuring 1,000s of feet of frontage along Hay Creek and an extensive network of drivable trails throughout. This diverse habitat offers oak woods, pine and aspen stands, river bottom, open meadows, and numerous smaller clearings, making it ideal for a wide range of wildlife and outdoor activities.

Surrounded by expansive agricultural tracts and mixed woodland, this property provides exceptional opportunities for whitetail deer, turkey, bear, ruffed grouse, and waterfowl—all in one location. A riverside campsite has already been established, perfect for hunting trips or weekend getaways.

The Northwest corner of the property features an outstanding building site with easy access off County Road 152. Buffered by mature trees with a gentle southern slope toward the creek, it's perfectly suited for a walk-out home or cabin.

Located just one mile from Two Inlets State Forest, you'll have access to miles of forest roads, ATV trails, and snowmobile routes, offering year-round adventure.

This property truly has a bit of everything—a rare find for hunters, nature lovers, and those looking to build their own private retreat. Don't miss out!

Additional Details:

Lot Acres	142.4
Lot Dimensions	Irregular
School District	309
Taxes	\$1,792
Taxes with Assessments	\$1,792
Tax Year	2025

Additional Features:



Listed By:
Coldwell Banker Crown Realtors

Driving Directions:

Affinity Real Estate Inc. participates in the Regional Multiple Listing Service of Minnesota, Inc. Broker Reciprocity (BR) program, allowing us to display other broker's listings on our website. All properties are subject to prior sale, change or withdrawal.



Call Affinity Real Estate

218-237-3333

info@affinityrealestate.com

County Rd 152 for 0.7

Affinity Real Estate - 600 Park Avenue South - Park Rapids MN 56470



website: www.AffinityRealEstate.com | email: info@affinityrealestate.com | office: 218-237-3333 | fax: 218-237-3377



\$398,900
 MLS 6722814 Lake Land
 TBD County 152
 Park Rapids MN 56470



website: www.AffinityRealEstate.com | email: info@affinityrealestate.com | office: 218-237-3333 | fax: 218-237-3377



\$398,900
MLS 6722814 Lake Land
TBD County 152
Park Rapids MN 56470



website: www.AffinityRealEstate.com | email: info@affinityrealestate.com | office: 218-237-3333 | fax: 218-237-3377



\$398,900
 MLS 6722814 Lake Land
 TBD County 152
 Park Rapids MN 56470



website: www.AffinityRealEstate.com | email: info@affinityrealestate.com | office: 218-237-3333 | fax: 218-237-3377



\$398,900
 MLS 6722814 Lake Land
 TBD County 152
 Park Rapids MN 56470



website: www.AffinityRealEstate.com | email: info@affinityrealestate.com | office: 218-237-3333 | fax: 218-237-3377



\$398,900
 MLS 6722814 Lake Land
 TBD County 152
 Park Rapids MN 56470



website: www.AffinityRealEstate.com | email: info@affinityrealestate.com | office: 218-237-3333 | fax: 218-237-3377



\$398,900

MLS 6722814 Lake Land
TBD County 152
Park Rapids MN 56470



website: www.AffinityRealEstate.com | email: info@affinityrealestate.com | office: 218-237-3333 | fax: 218-237-3377



\$398,900
MLS 6722814 Lake Land
TBD County 152
Park Rapids MN 56470



website: www.AffinityRealEstate.com | email: info@affinityrealestate.com | office: 218-237-3333 | fax: 218-237-3377



\$398,900
 MLS 6722814 Lake Land
 TBD County 152
 Park Rapids MN 56470



website: www.AffinityRealEstate.com | email: info@affinityrealestate.com | office: 218-237-3333 | fax: 218-237-3377



\$398,900
 MLS 6722814 Lake Land
 TBD County 152
 Park Rapids MN 56470



website: www.AffinityRealEstate.com | email: info@affinityrealestate.com | office: 218-237-3333 | fax: 218-237-3377



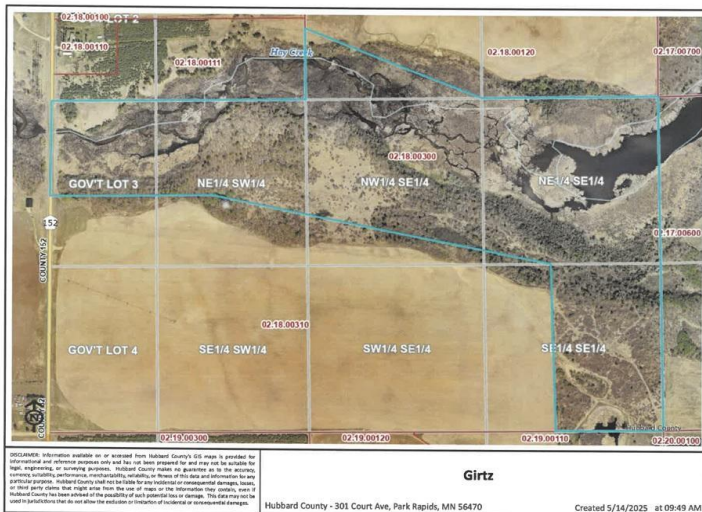
\$398,900
 MLS 6722814 Lake Land
 TBD County 152
 Park Rapids MN 56470



website: www.AffinityRealEstate.com | email: info@affinityrealestate.com | office: 218-237-3333 | fax: 218-237-3377



\$398,900
MLS 6722814 Lake Land
TBD County 152
Park Rapids MN 56470



website: www.AffinityRealEstate.com | email: info@affinityrealestate.com | office: 218-237-3333 | fax: 218-237-3377



\$398,900
 MLS 6722814 Lake Land
 TBD County 152
 Park Rapids MN 56470