



MLS 6722849 Residential

\$574,900

2,656 sq ft
4 bedrooms
3 baths

10551 Shore Drive
Merrifield MN 56465

Status: Active

Description:

Experience privacy and convenience at this stunning home on 5+ acres, situated on a quiet cul-de-sac, bordering the Paul Bunyan Trail. Located 15 mins NE of Baxter & 16 mins SE of Nisswa, this property offers easy access to Brainerd Lakes area attractions. Meticulously cared for and tastefully updated executive home!

Features include steel siding, well-landscaped private yard, covered front porch, 10x14 maintenance-free back deck, 16x14 4-season porch, insulated & heated garage, granite kitchen countertops, pull out drawers in cabinets, pantry & natural gas brick fireplace.

Recent upgrades: updated bathrooms, new gas water heater (2023), new water softener (2024), new central air conditioning (2021), new boiler (2018), new flooring throughout (2025), & fresh interior paint (2025). The full unfinished basement is plumbed for a full bath.

Enjoy tranquility, modern amenities, & direct access to outdoor recreation at this remarkable Brainerd home. Don't miss this opportunity – contact us to schedule your private showing today.

Additional Details:

Year Built	1996
Lot Acres	5.16
Lot Dimensions	irregular
Garage Stalls	3
School District	181
Taxes	\$2,910
Taxes with Assessments	\$2,910
Tax Year	2024

Additional Features:

Basement: Block, Daylight/Lookout Windows, Drain Tiled, Full, Sump Pump, Unfinished **Fuel:** Natural Gas **Garage:** 3 **Heat:** Baseboard, Boiler, Hot Water **Sewer:** Private Sewer, Tank with Drainage Field **Water:** Drilled, Well **Air Conditioning:** Central Air

Driving Directions:

CR 3 N of Brainerd to left (West) on East Shore Drive to end of cul de sac.



Listed By:
eXp Realty

Affinity Real Estate Inc. participates in the Regional Multiple Listing Service of Minnesota, Inc Broker Reciprocity (sm) program, allowing us to display other broker's listings on our website. All properties are subject to prior sale, change or withdrawal.



Call Affinity Real Estate

218-237-3333

info@affinityrealestate.com



Affinity Real Estate - 600 Park Avenue South - Park Rapids MN 56470



website: www.AffinityRealEstate.com | email: info@affinityrealestate.com | office: 218-237-3333 | fax: 218-237-3377

Affinity
REAL ESTATE INC

\$574,900
MLS 6722849 Residential
10551 Shore Drive
Merrifield MN 56465



website: www.AffinityRealEstate.com | email: info@affinityrealestate.com | office: 218-237-3333 | fax: 218-237-3377



\$574,900
MLS 6722849 Residential
10551 Shore Drive
Merrifield MN 56465



website: www.AffinityRealEstate.com | email: info@affinityrealestate.com | office: 218-237-3333 | fax: 218-237-3377

Affinity
REAL ESTATE INC

\$574,900
MLS 6722849 Residential
10551 Shore Drive
Merrifield MN 56465



website: www.AffinityRealEstate.com | email: info@affinityrealestate.com | office: 218-237-3333 | fax: 218-237-3377

Affinity
REAL ESTATE INC

\$574,900
MLS 6722849 Residential
10551 Shore Drive
Merrifield MN 56465



website: www.AffinityRealEstate.com | email: info@affinityrealestate.com | office: 218-237-3333 | fax: 218-237-3377

Affinity
REAL ESTATE INC

\$574,900
MLS 6722849 Residential
10551 Shore Drive
Merrifield MN 56465



website: www.AffinityRealEstate.com | email: info@affinityrealestate.com | office: 218-237-3333 | fax: 218-237-3377

Affinity
REAL ESTATE INC

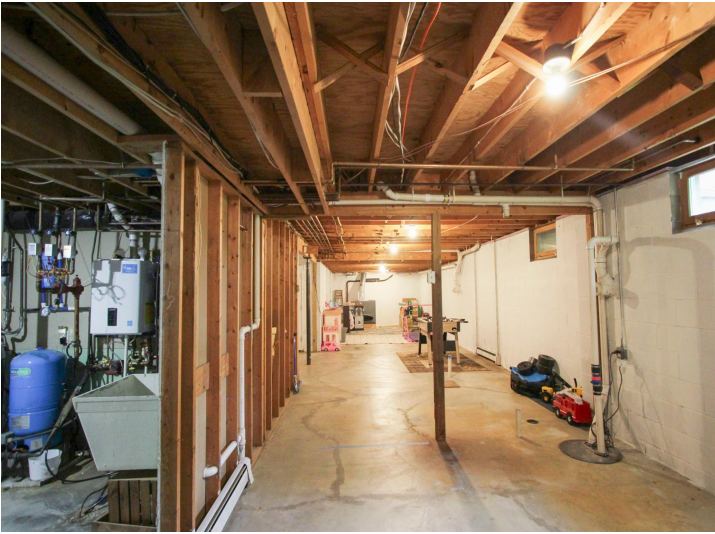
\$574,900
MLS 6722849 Residential
10551 Shore Drive
Merrifield MN 56465



website: www.AffinityRealEstate.com | email: info@affinityrealestate.com | office: 218-237-3333 | fax: 218-237-3377



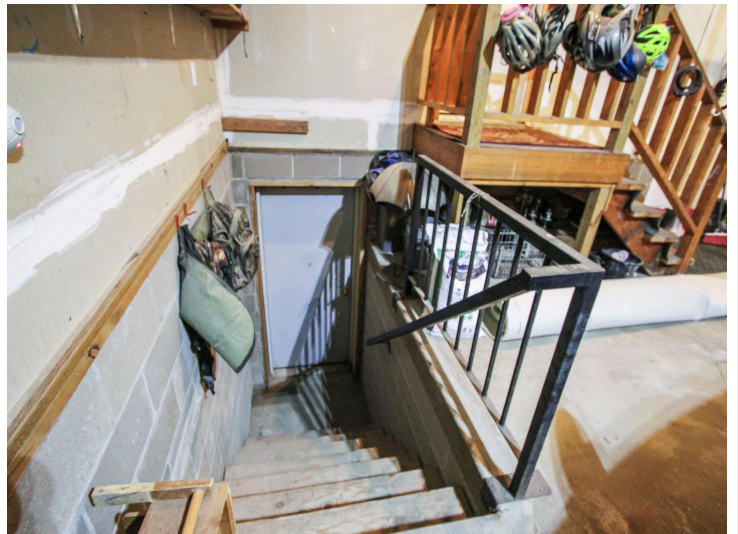
\$574,900
MLS 6722849 Residential
10551 Shore Drive
Merrifield MN 56465



website: www.AffinityRealEstate.com | email: info@affinityrealestate.com | office: 218-237-3333 | fax: 218-237-3377



\$574,900
 MLS 6722849 Residential
 10551 Shore Drive
 Merrifield MN 56465



website: www.AffinityRealEstate.com | email: info@affinityrealestate.com | office: 218-237-3333 | fax: 218-237-3377



\$574,900
 MLS 6722849 Residential
 10551 Shore Drive
 Merrifield MN 56465



website: www.AffinityRealEstate.com | email: info@affinityrealestate.com | office: 218-237-3333 | fax: 218-237-3377



\$574,900
 MLS 6722849 Residential
 10551 Shore Drive
 Merrifield MN 56465