



MLS 6722940 Commercial

\$699,000

31075 State Hwy 34
Akeley MN 56433

Status: Active

Description:

Introducing the Red River Bar and Grill, your premier opportunity for a turn-key business with impressive financials! Nestled on the bustling Highway 34, this remarkable establishment boasts prime frontage that's hard to miss. It features a fully stocked off-sale liquor store, an inviting beer cave, and an exquisite on-sale liquor license. With a vibrant restaurant and a versatile event center, Red River Bar and Grill is not just a business; it's a destination waiting to be discovered! Don't miss your chance to own this exceptional venture. Located only Minutes from the Paul Bunyan State Forest, Some of the North Country's premier fishing lakes, and right across the famous Heartland Trail.

Additional Details:

Year Built	1986
Lot Dimensions	728x339x725x281
School District	693
Taxes	\$6,299
Taxes with Assessments	\$7,670
Tax Year	2025

Additional Features:

Fuel: Array **Heat:** Forced Air **Sewer:** Tank with Drainage Field **Water:** Drilled **Air Conditioning:** Central Air

Driving Directions:

From Akeley Highway 64 and Highway 34 head East on Highway 34 to property on right.



Listed By:
Wolff & Simon Real Estate

Affinity Real Estate Inc. participates in the Regional Multiple Listing Service of Minnesota, Inc Broker Reciprocity (sm) program, allowing us to display other broker's listings on our website. All properties are subject to prior sale, change or withdrawal.



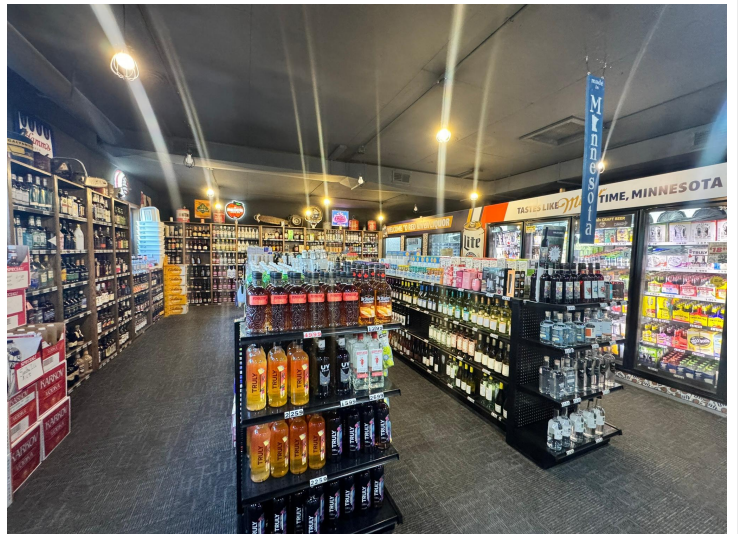
Call Affinity Real Estate

218-237-3333

info@affinityrealestate.com



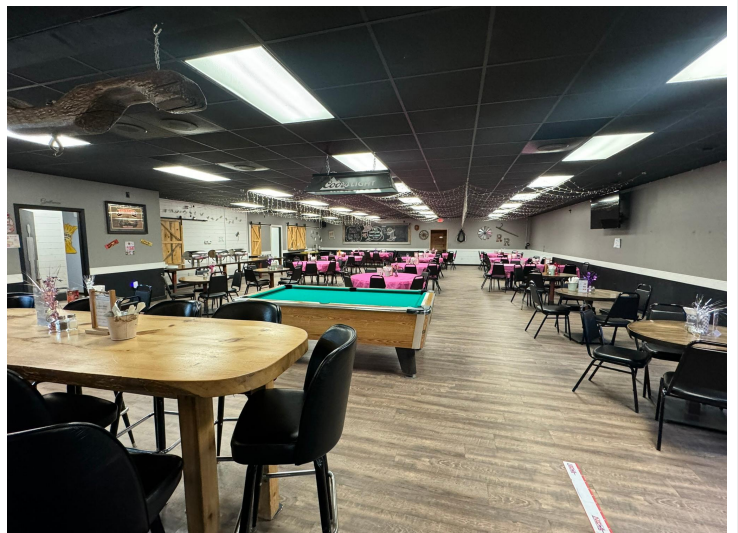
Affinity Real Estate - 600 Park Avenue South - Park Rapids MN 56470



website: www.AffinityRealEstate.com | email: info@affinityrealestate.com | office: 218-237-3333 | fax: 218-237-3377



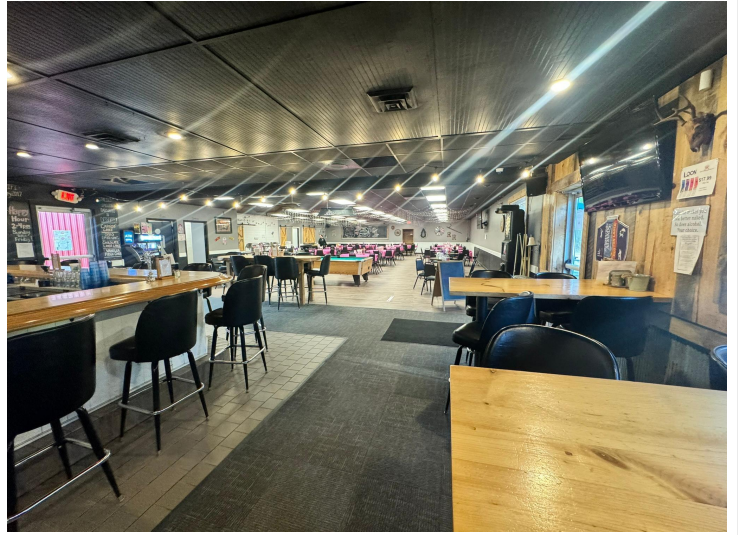
\$699,000
 MLS 6722940 Commercial
 31075 State Hwy 34
 Akeley MN 56433



website: www.AffinityRealEstate.com | email: info@affinityrealestate.com | office: 218-237-3333 | fax: 218-237-3377

Affinity
REAL ESTATE INC

\$699,000
MLS 6722940 Commercial
31075 State Hwy 34
Akeley MN 56433



website: www.AffinityRealEstate.com | email: info@affinityrealestate.com | office: 218-237-3333 | fax: 218-237-3377

Affinity
REAL ESTATE INC

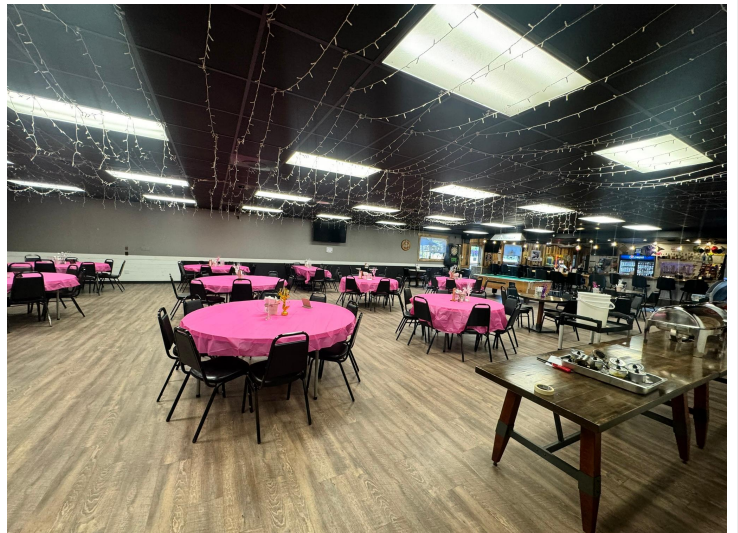
\$699,000
MLS 6722940 Commercial
31075 State Hwy 34
Akeley MN 56433



website: www.AffinityRealEstate.com | email: info@affinityrealestate.com | office: 218-237-3333 | fax: 218-237-3377



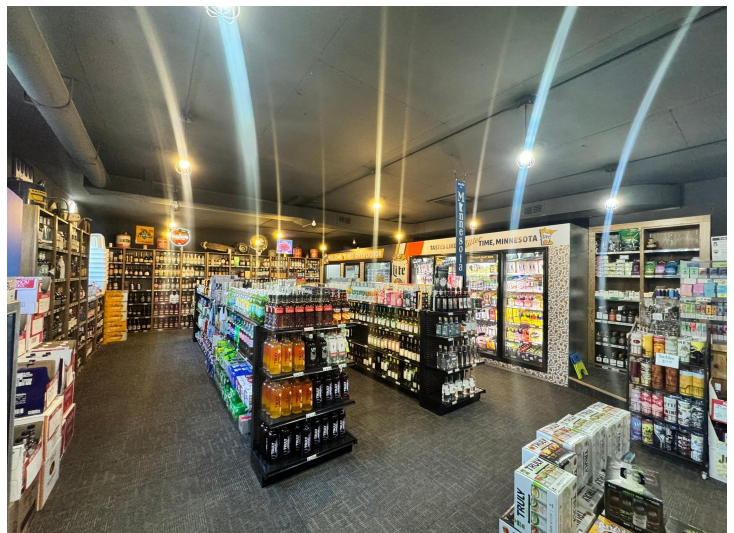
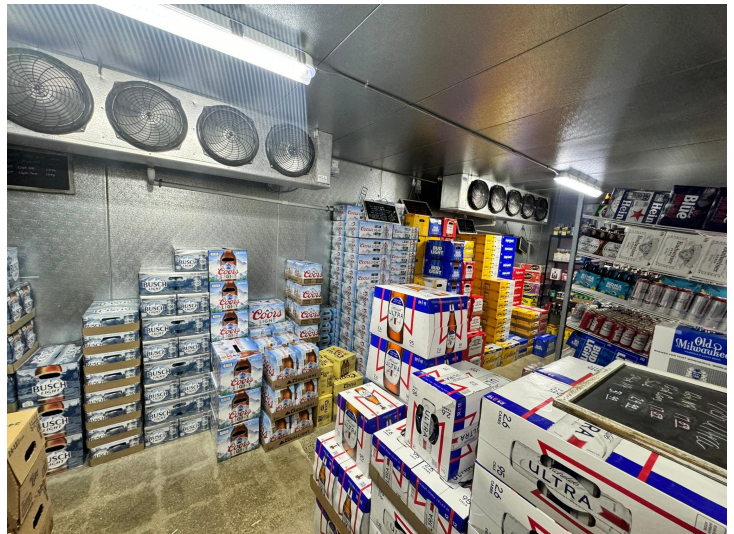
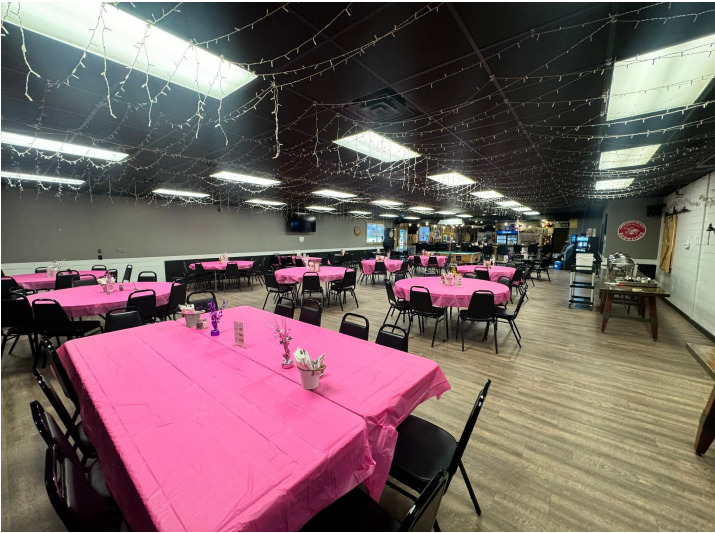
\$699,000
 MLS 6722940 Commercial
 31075 State Hwy 34
 Akeley MN 56433



website: www.AffinityRealEstate.com | email: info@affinityrealestate.com | office: 218-237-3333 | fax: 218-237-3377

Affinity
REAL ESTATE INC

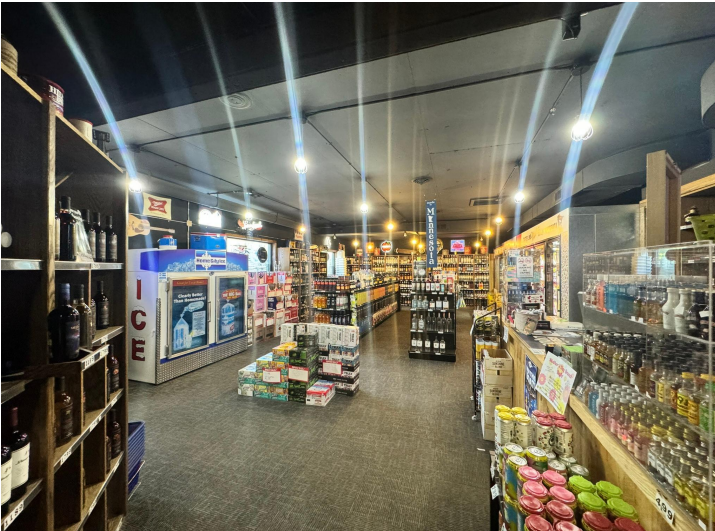
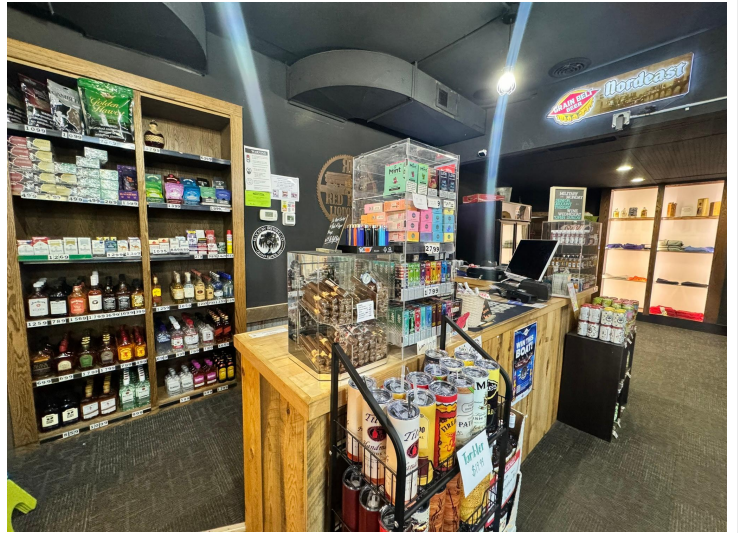
\$699,000
MLS 6722940 Commercial
31075 State Hwy 34
Akeley MN 56433



website: www.AffinityRealEstate.com | email: info@affinityrealestate.com | office: 218-237-3333 | fax: 218-237-3377



\$699,000
 MLS 6722940 Commercial
 31075 State Hwy 34
 Akeley MN 56433



website: www.AffinityRealEstate.com | email: info@affinityrealestate.com | office: 218-237-3333 | fax: 218-237-3377

Affinity
REAL ESTATE INC

\$699,000
MLS 6722940 Commercial
31075 State Hwy 34
Akeley MN 56433